

RFM66W ISM TRANSCEIVER MODULE V1.0

868 & 915MHz Ultra Low Power High Link Budget Integrated UHF Transceiver

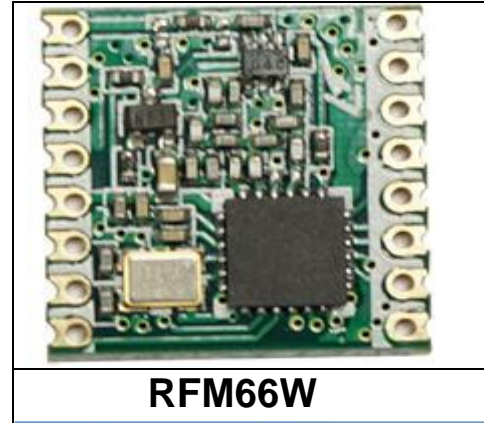
GENERAL DESCRIPTION

The RFM66W is a fully integrated ISM band transceiver optimized for use in the (EN 300 220-1) 868 MHz band in Europe and the (FCC Part 15) 915 MHz band in the US with a minimum of external components. It offers a combination of high link budget and low current consumption in all operating modes. The 143 dB link budget is achieved by a low noise CMOS receiver front end and up to +20 dBm of transmit output power. A pair of internal power amplifiers are provided permitting either fully regulated - for constant RF performance, or direct supply connection - for optimal efficiency. This makes RFM66W ideal for either M2M applications powered by alkaline battery chemistries or long battery life metering applications using Lithium battery chemistries.

The Low-IF architecture of the RFM66W sees fast transceiver start times and demodulation predicated towards low modulation index and gaussian filtered spectrally efficient modulation formats.

KEY PRODUCT FEATURES

- +20 dBm - 100 mW Constant RF output vs. Vsupply
- +14 dBm high efficiency PA
- Programmable bit rate up to 300kbps
- High Sensitivity: down to -123 dBm at 1.2 kbps
- Bullet-proof front end: IIP3 = -12 dBm
- 80 dB Blocking Immunity
- Low RX current of 9.3 mA, 100nA register retention
- Fully integrated synthesizer with a resolution of 61 Hz
- FSK, GFSK, MSK, GMSK and OOK modulations
- Built-in Bit Synchronizer performing Clock Recovery
- Sync Word Recognition
- Preamble detection
- io-homecontrol® compatibility mode
- 115 dB+ Dynamic Range RSSI
- Automatic RF Sense with ultra-fast AFC
- Packet engine up to 64 bytes with CRC
- Built-in temperature sensor and Low Battery indicator
- ◆ Module Size:19.7X16mm



APPLICATIONS

- Wireless Sensor Networks
- Automated Meter Reading
- Home and Building Automation
- Wireless Alarm and Security Systems
- Industrial Monitoring and Control

Table of Contents

| <i>Section</i> | <i>Page</i> |
|---|-------------|
| 1. General Description | 9 |
| 1.1. Simplified Block Diagram | 9 |
| 1.2. Pin and Marking Diagram | 10 |
| 1.3. Pin Description | 11 |
| 2. Electrical Characteristics..... | 12 |
| 2.1. ESD Notice..... | 12 |
| 2.2. Absolute Maximum Ratings | 12 |
| 2.3. Operating Range..... | 12 |
| 2.4. Chip Specification | 13 |
| 2.4.1. Power Consumption | 13 |
| 2.4.2. Frequency Synthesis | 13 |
| 2.4.3. Receiver | 14 |
| 2.4.4. Transmitter | 15 |
| 2.4.5. Digital Specification | 16 |
| 3. Chip Description..... | 17 |
| 3.1. Power Supply Strategy..... | 18 |
| 3.2. Low Battery Detector..... | 18 |
| 3.3. Frequency Synthesis | 19 |
| 3.3.1. Reference Oscillator | 19 |
| 3.3.2. CLKOUT Output | 19 |
| 3.3.3. PLL Architecture | 19 |
| 3.3.4. RC Oscillator | 21 |
| 3.4. Transmitter Description | 22 |
| 3.4.1. Architecture Description | 22 |
| 3.4.2. Bit Rate Setting | 22 |
| 3.4.3. FSK Modulation | 23 |
| 3.4.4. OOK Modulation | 24 |
| 3.4.5. Modulation Shaping..... | 24 |
| 3.4.6. RF Power Amplifiers..... | 24 |
| 3.4.7. High Power +20dBm Operation | 25 |
| 3.4.8. Over Current Protection | 26 |
| 3.5. Receiver Description | 27 |
| 3.5.1. Overview | 27 |
| 3.5.2. Automatic Gain Control - AGC | 27 |
| 3.5.3. Enabling the Demodulation | 28 |
| 3.5.4. RSSI | 30 |
| 3.5.5. Channel Filter | 30 |
| 3.5.6. FSK Demodulator | 31 |
| 3.5.7. OOK Demodulator | 31 |

| | |
|--|----|
| 3.5.8. Bit Synchronizer | 34 |
| 3.5.9. Frequency Error Indicator | 34 |
| 3.5.10. AFC | 35 |
| 3.5.11. Preamble Detector | 36 |
| 3.5.12. Image Rejection Mixer | 36 |
| 3.5.13. Image and RSSI Calibration | 36 |
| 3.6. Temperature Measurement..... | 37 |
| 3.7. Timeout Function | 37 |
| 4. Operating Modes | 38 |
| 4.1. General Overview | 38 |
| 4.2. Startup Times..... | 38 |
| 4.2.1. Transmitter Startup Time..... | 39 |
| 4.2.2. Tx Start Procedure | 39 |
| 4.2.3. Receiver Startup Time..... | 39 |
| 4.3. Top Level Sequencer | 40 |
| 4.3.1. Sequencer States | 40 |
| 4.3.2. Sequencer Transitions | 41 |
| 4.3.3. Example Sequence: Listen Mode | 46 |
| 5. Data Processing..... | 47 |
| 5.1. Overview | 47 |
| 5.1.1. Block Diagram | 47 |
| 5.1.2. Data Operation Modes | 47 |
| 5.2. Control Block Description..... | 48 |
| 5.2.1. SPI Interface..... | 48 |
| 5.2.2. FIFO | 49 |
| 5.2.3. Sync Word Recognition | 50 |
| 5.2.4. Packet Handler | 51 |
| 5.2.5. Control..... | 51 |
| 5.3. Digital IO Pins Mapping..... | 51 |
| 5.4. Continuous Mode | 53 |
| 5.4.1. General Description..... | 53 |
| 5.4.2. Tx Processing..... | 53 |
| 5.4.3. Rx Processing | 54 |
| 5.5. Packet Mode | 54 |
| 5.5.1. General Description..... | 54 |
| 5.5.2. Packet Format | 55 |
| 5.5.3. Tx Processing..... | 58 |
| 5.5.4. Rx Processing | 58 |
| 5.5.5. Handling Large Packets | 59 |
| 5.5.6. Packet Filtering..... | 59 |
| 5.5.7. DC-Free Data Mechanisms | 61 |
| 5.5.8. Beacon Tx Mode | 62 |

| | | |
|--------|--|----|
| 5.6. | io-homecontrol® Compatibility Mode | 62 |
| 6. | Description of the Registers..... | 63 |
| 6.1. | Register Table Summary | 63 |
| 6.2. | Register Map | 66 |
| 7. | Application Information | 81 |
| 7.1. | Crystal Resonator Specification | 81 |
| 7.2. | Reset of the Chip | 81 |
| 7.2.1. | POR..... | 81 |
| 7.2.2. | Manual Reset | 82 |
| 7.3. | Reference Designs..... | 82 |
| 7.4. | Example CRC Calculation | 85 |
| 7.5. | Example Temperature Reading | 86 |
| 8. | Packaging Information | 87 |
| 8.1. | Package Outline Drawing..... | 87 |
| 8.2. | Recommended Land Pattern | 87 |
| 8.3. | Thermal Impedance | 88 |
| 8.4. | Tape & Reel Specification..... | 88 |

List of Figures

| <i>Section</i> | <i>Page</i> |
|--|-------------|
| Figure 1. Block Diagram | 9 |
| Figure 2. Pin Diagram | 10 |
| Figure 3. Marking Diagram | 10 |
| Figure 4. Simplified RFM66W Block Schematic Diagram | 17 |
| Figure 5. TCXO Connection | 19 |
| Figure 6. Typical Phase Noise Performances of the Low Consumption and Low Phase Noise PLLs. | 20 |
| Figure 7. RF Front-end Architecture Shows the Internal PA Configuration. | 22 |
| Figure 8. Receiver Block Diagram | 27 |
| Figure 9. Receiver Startup Process. | 29 |
| Figure 10. OOK Peak Demodulator Description | 32 |
| Figure 11. Floor Threshold Optimization | 33 |
| Figure 12. Bit Synchronizer Description | 34 |
| Figure 13. FEI Process | 35 |
| Figure 14. Temperature Sensor Response | 37 |
| Figure 15. Startup Process | 38 |
| Figure 16. Sequencer Transitions From Idle State | 42 |
| Figure 17. Sequencer Transitions From LowPower State | 43 |
| Figure 18. Sequencer Transitions From Receive State | 43 |
| Figure 19. Sequencer Transitions From ReceiveRestart State | 44 |
| Figure 20. Sequencer Transitions From PacketReceived State | 44 |
| Figure 21. Sequencer Transitions From Transmit State | 45 |
| Figure 22. Listen mode Sequence (no wanted signal) | 46 |
| Figure 23. RFM66W Data Processing Conceptual View | 47 |
| Figure 24. SPI Timing Diagram (single access) | 48 |
| Figure 25. FIFO and Shift Register (SR) | 49 |
| Figure 26. FifoLevel IRQ Source Behavior | 50 |
| Figure 27. Sync Word Recognition | 51 |
| Figure 28. Continuous Mode Conceptual View | 53 |
| Figure 29. Tx Processing in Continuous Mode | 53 |
| Figure 30. Rx Processing in Continuous Mode | 54 |
| Figure 31. Packet Mode Conceptual View | 55 |
| Figure 32. Fixed Length Packet Format | 56 |
| Figure 33. Variable Length Packet Format | 57 |
| Figure 34. Unlimited Length Packet Format | 58 |
| Figure 35. Manchester Encoding/Decoding | 61 |
| Figure 36. Data Whitening Polynomial | 62 |
| Figure 37. POR Timing Diagram | 81 |
| Figure 38. Manual Reset Timing Diagram | 82 |
| Figure 39. Reference Design - Single RF Input/Output, High Efficiency PA | 82 |

| | |
|--|----|
| Figure 40. Reference Design - with Antenna Switch up to +20dBm | 83 |
| Figure 41. Reference Design - with Antenna Switch and High Efficiency PA | 83 |
| Figure 42. Reference Design - Single RF Input/Output, High Stability PA | 84 |
| Figure 43. Example CRC Code | 85 |
| Figure 44. Example Temperature Reading | 86 |
| Figure 45. Package Outline Drawing | 87 |
| Figure 46. Recommended Land Pattern | 87 |
| Figure 47. Tape & Reel Specification | 88 |

List of Tables

| <i>Section</i> | <i>Page</i> |
|---|-------------|
| Table 1. RFM66W Pinouts | 11 |
| Table 2. Absolute Maximum Ratings | 12 |
| Table 3. Operating Range | 12 |
| Table 4. Power Consumption Specification | 13 |
| Table 5. Frequency Synthesizer Specification | 13 |
| Table 6. Receiver Specification | 14 |
| Table 7. Transmitter Specification | 15 |
| Table 8. Digital Specification | 16 |
| Table 9. Bit Rate Examples | 23 |
| Table 10. Power Amplifier Mode Selection Truth Table | 24 |
| Table 11. High Power Settings | 25 |
| Table 12. Absolute Maximum Rating, +20dBm Operation | 25 |
| Table 13. Operating Range, +20dBm Operation | 25 |
| Table 14. Trimming of the OCP Current | 26 |
| Table 15. LNA Gain Control and Performances | 27 |
| Table 16. Data Output Conditions. | 28 |
| Table 17. RssiSmoothing Options | 30 |
| Table 18. Available RxBw Settings | 31 |
| Table 19. Preamble Detector Settings | 36 |
| Table 20. Basic Transceiver Modes | 38 |
| Table 21. Sequencer States | 40 |
| Table 22. Sequencer Transition Options | 41 |
| Table 23. Sequencer Timer Settings | 42 |
| Table 24. Listen Mode Example Scenario | 46 |
| Table 25. Status of FIFO when Switching Between Different Modes of the Chip | 50 |
| Table 26. DIO Mapping, Continuous Mode | 52 |
| Table 27. DIO Mapping, Packet Mode | 52 |
| Table 28. CRC Description | 60 |
| Table 29. Registers Summary | 63 |
| Table 30. Register Map | 66 |
| Table 31. Crystal Specification | 81 |
| Table 32. Revision History | 89 |

Acronyms

| | | | |
|-------|---|------|------------------------------------|
| BOM | Bill Of Materials | LSB | Least Significant Bit |
| BR | Bit Rate | MSB | Most Significant Bit |
| BW | Bandwidth | NRZ | Non Return to Zero |
| CCITT | Comité Consultatif International Téléphonique et Télégraphique - ITU | OOK | On Off Keying |
| CRC | Cyclic Redundancy Check | PA | Power Amplifier |
| DAC | Digital to Analog Converter | PCB | Printed Circuit Board |
| ETSI | European Telecommunications Standards Institute | PLL | Phase-Locked Loop |
| FCC | Federal Communications Commission | POR | Power On Reset |
| Fdev | Frequency Deviation | RBW | Resolution BandWidth |
| FIFO | First In First Out | RF | Radio Frequency |
| FIR | Finite Impulse Response | RSSI | Received Signal Strength Indicator |
| FS | Frequency Synthesizer | Rx | Receiver |
| FSK | Frequency Shift Keying | SAW | Surface Acoustic Wave |
| GUI | Graphical User Interface | SPI | Serial Peripheral Interface |
| IC | Integrated Circuit | SR | Shift Register |
| ID | IDentificator | Stby | Standby |
| IF | Intermediate Frequency | Tx | Transmitter |
| IRQ | Interrupt ReQuest | uC | Microcontroller |
| ITU | International Telecommunication Union | VCO | Voltage Controlled Oscillator |
| LFSR | Linear Feedback Shift Register | XO | Crystal Oscillator |
| LNA | Low Noise Amplifier | XOR | eXclusive OR |
| LO | Local Oscillator | | |

This product datasheet contains a detailed description of the RFM66W performance and functionality. Please consult the Semtech website for the latest updates or errata.

1. General Description

The RFM66W is a single-chip integrated circuit ideally suited for today's high performance ISM band RF applications. The RFM66W's advanced feature set includes a state-of-the-art packet engine and top level sequencer. In conjunction with a 64 byte FIFO, these automate the entire process of packet transmission, reception and acknowledgement without incurring the consumption penalty common to many transceivers that feature an on-chip MCU. Being easily configurable, it greatly simplifies system design and reduces external MCU workload to an absolute minimum. The high level of integration reduces the external BoM to passive decoupling and impedance matching components. It is intended for use as a high-performance, low-cost FSK and OOK RF transceiver for robust, frequency agile, half-duplex, bi-directional RF links. Where stable and constant RF performance is required over the full operating range of the device down to 1.8V the receiver and PA are fully regulated. For transmit intensive applications - a high efficiency PA can be selected to optimize the current consumption.

The RFM66W is intended for applications requiring high sensitivity and low receive current. Coupling the digital state machine with an RF front end capable of delivering a link budget of 143dB (-123dBm sensitivity in conjunction with +20dBm Pout). The RFM66W complies with both ETSI and FCC regulatory requirements and is available in a 5 x 5 mm QFN 24 lead package. The low-IF architecture of the RFM66W is well suited for low modulation index and narrow band operation.

1.1. Simplified Block Diagram

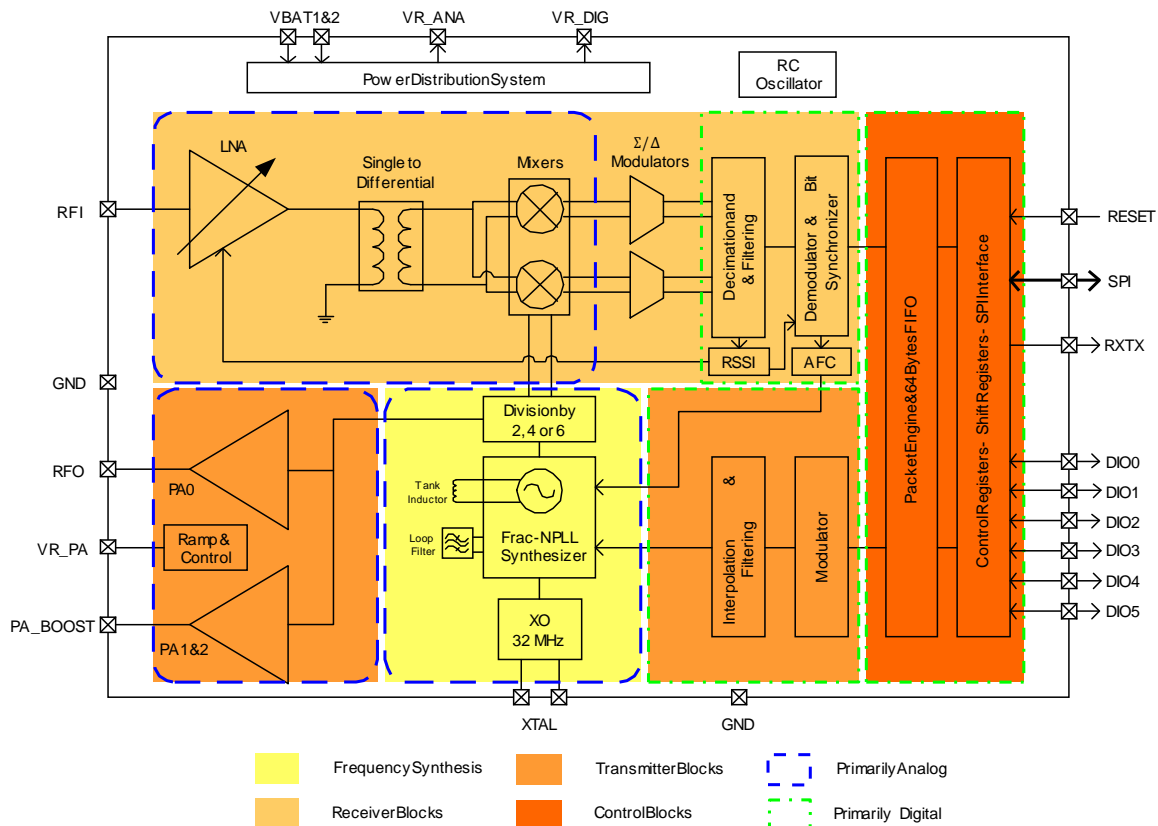


Figure 1. Block Diagram

1.2. Pin and Marking Diagram

The following diagram shows the pin arrangement of the top view.

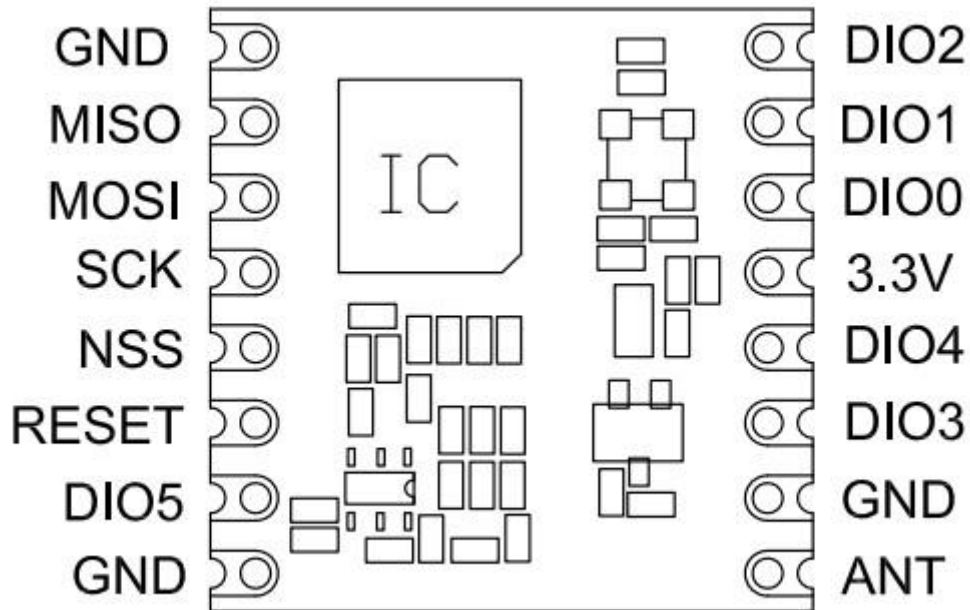


Figure 3. Marking Diagram

1.3. Pin Description

Table 1 RFM66W Pinouts

| Number | Name | Type | Description |
|-------------------------------------|-------|------|----------------------------------|
| Description Stand Alone Mode | | | |
| 1 | GND | - | Ground |
| 2 | MISO | I | SPI Data output |
| 3 | MOSI | O | SPI Data input |
| 4 | SCK | I | SPI Clock input |
| 5 | NSS | I | SPI Chip select input |
| 6 | RESET | I/O | Reset trigger input |
| 7 | DIO5 | I/O | Digital I/O, software configured |
| 8 | GND | - | Ground |
| 9 | ANT | - | RF signal output/input. |
| 10 | GND | - | Ground |
| 11 | DIO3 | I/O | Digital I/O, software configured |
| 12 | DIO4 | I/O | Digital I/O, software configured |
| 13 | 3.3V | - | Supply voltage |
| 14 | DIO0 | I/O | Digital I/O, software configured |
| 15 | DIO1 | I/O | Digital I/O, software configured |
| 16 | DIO2 | I/O | Digital I/O, software configured |

2. Electrical Characteristics

2.1. ESD Notice

The RFM66W is a high performance radio frequency device. It satisfies:

- Class 2 of the JEDEC standard JESD22-A114-B (Human Body Model) on all pins.
- Class III of the JEDEC standard JESD22-C101C (Charged Device Model) on all pins



It should thus be handled with all the necessary ESD precautions to avoid any permanent damage.

2.2. Absolute Maximum Ratings

Stresses above the values listed below may cause permanent device failure. Exposure to absolute maximum ratings for extended periods may affect device reliability.

Table 2 Absolute Maximum Ratings

| Symbol | Description | Min | Max | Unit |
|--------|----------------------|------|------|------|
| VDDmr | Supply Voltage | -0.5 | 3.9 | V |
| Tmr | Temperature | -55 | +115 | °C |
| Tj | Junction temperature | - | +125 | °C |
| Pmr | RF Input Level | - | +10 | dBm |

Note Specific ratings apply to the +20dBm operation. Please refer to Section 3.4.7.

2.3. Operating Range

Table 3 Operating Range

| Symbol | Description | Min | Max | Unit |
|--------|-----------------------------------|-----|-----|------|
| VDDop | Supply voltage | 1.8 | 3.7 | V |
| Top | Operational temperature range | -40 | +85 | °C |
| Clop | Load capacitance on digital ports | - | 25 | pF |
| ML | RF Input Level | - | +10 | dBm |

Note A specific supply voltage range applies to the +20dBm operation. Please refer to Section 3.4.7.

2.4. Chip Specification

The tables below give the electrical specifications of the transceiver under the following conditions: Supply voltage VBAT1=VBAT2=VDD=3.3 V, temperature = 25 °C, FXOSC = 32 MHz, F_{RF} = 915 MHz, Pout = +13dBm, 2-level FSK modulation without pre-filtering, FDA = 5 kHz, Bit Rate = 4.8 kb/s and terminated in a matched 50 Ohm impedance, unless otherwise specified. Matching as per Figure 39.

Note Unless otherwise specified, the performance in the 868 MHz band is identical or better.

2.4.1. Power Consumption

Table 4 Power Consumption Specification

| Symbol | Description | Conditions | Min | Typ | Max | Unit |
|---------|---|-----------------------------|-----|-----|-----|------|
| IDDSL | Supply current in Sleep mode | | - | 0.1 | 1 | uA |
| IDDIDLE | Supply current in Idle mode | RC oscillator enabled | - | 1.2 | - | uA |
| IDDST | Supply current in Standby mode | Crystal oscillator enabled | - | 1.3 | 1.5 | mA |
| IDDFS | Supply current in Synthesizer mode | FSRx | - | 4.5 | - | mA |
| IDDR | Supply current in Receive mode | <i>LnaBoost</i> = 00 | - | 9.3 | - | mA |
| IDDT | Supply current in Transmit mode with impedance matching | RFOP = +20 dBm, on PA_BOOST | - | 125 | - | mA |
| | | RFOP = +17 dBm, on PA_BOOST | - | 93 | - | mA |
| | | RFOP = +13 dBm, on RFO pin | - | 28 | - | mA |
| | | RFOP = + 7 dBm, on RFO pin | - | 18 | - | mA |

2.4.2. Frequency Synthesis

Table 5 Frequency Synthesizer Specification

| Symbol | Description | Conditions | Min | Typ | Max | Unit |
|--------|--|---------------------------------------|-----|------|------|------|
| FR | Synthesizer frequency range | Programmable | 862 | - | 1020 | MHz |
| FXOSC | Crystal oscillator frequency | See section 7.1 | - | 32 | - | MHz |
| TS_OSC | Crystal oscillator wake-up time | With crystal specified in section 7.1 | - | 250 | - | us |
| TS_FS | Frequency synthesizer wake-up time to PLLock signal | From Standby mode | - | 60 | - | us |
| TS_HOP | Frequency synthesizer hop time at most 10 kHz away from the target frequency | 200 kHz step | - | 20 | - | us |
| | | 1 MHz step | - | 20 | - | us |
| | | 5 MHz step | - | 50 | - | us |
| | | 7 MHz step | - | 50 | - | us |
| | | 12 MHz step | - | 50 | - | us |
| | | 25 MHz step | - | 50 | - | us |
| FSTEP | Frequency synthesizer step | $FSTEP = FXOSC/2^{19}$ | - | 61.0 | - | Hz |
| FRC | RC Oscillator frequency | After calibration | - | 62.5 | - | kHz |

| | | | | | | |
|-----|------------------------------|--|-----|---|--------|------|
| BRF | Bit rate, FSK | Programmable values (1) | 1.2 | - | 300 | kbps |
| BRO | Bit rate, OOK | Programmable | 1.2 | - | 32.768 | kbps |
| BRA | Bit Rate Accuracy | ABS(wanted BR - available BR) | - | - | 250 | ppm |
| FDA | Frequency deviation, FSK (1) | Programmable FDA + BRF/2 =< 250 kHz | 0.6 | - | 200 | kHz |

Note For Maximum Bit rate the maximum modulation index is 1.

2.4.3. Receiver

All receiver tests are performed with RxBw = 10 kHz (Single Side Bandwidth) as programmed in *RegRxBw*, receiving a PN15 sequence. Sensitivities are reported for a 0.1% BER (with Bit Synchronizer enabled), unless otherwise specified. Blocking tests are performed with an unmodulated interferer. The wanted signal power for the Blocking Immunity, ACR, IIP2, IIP3 and AMR tests is set 3 dB above the receiver sensitivity level.

Table 6 Receiver Specification

| Symbol | Description | Conditions | Min | Typ | Max | Unit |
|--------|--|--|-----|------|-----|------|
| RFS_F | Direct tie of RFI and RFO pins, as shown in Figure 39. FSK sensitivity, highest LNA gain. | FDA = 5 kHz, BR = 1.2 kb/s | - | -119 | - | dBm |
| | | FDA = 5 kHz, BR = 4.8 kb/s | - | -115 | - | dBm |
| | | FDA = 40 kHz, BR = 38.4 kb/s* | - | -105 | - | dBm |
| | | FDA = 20 kHz, BR = 38.4 kb/s** | - | -106 | - | dBm |
| | | FDA = 62.5 kHz, BR = 250 kb/s*** | - | -92 | - | dBm |
| | Split RF paths, as shown in Figure 40, LnaBoost is turned on, the RF switch insertion loss is not accounted for. | FDA = 5 kHz, BR = 1.2 kb/s | - | -123 | - | dBm |
| | | FDA = 5 kHz, BR = 4.8 kb/s | - | -119 | - | dBm |
| | | FDA = 40 kHz, BR = 38.4 kb/s* | - | -110 | - | dBm |
| | | FDA = 20 kHz, BR = 38.4 kb/s** | - | -110 | - | dBm |
| | | FDA = 62.5 kHz, BR = 250 kb/s*** | - | -97 | - | dBm |
| RFS_O | OOK sensitivity, highest LNA gain Conditions of Figure 39 | BR = 4.8 kb/s | - | -117 | - | dBm |
| | | BR = 32 kb/s | - | -108 | - | dBm |
| CCR | Co-Channel Rejection | | - | -8 | - | dB |
| ACR | Adjacent Channel Rejection | FDA = 2 kHz, BR = 1.2kb/s, RxBw = 5.2kHz Offset = +/- 25 kHz | - | 54 | - | dB |
| | | FDA = 5 kHz, BR=4.8kb/s Offset = +/- 25 kHz | - | 50 | - | dB |
| | | Offset = +/- 50 kHz | - | 50 | - | dB |
| BI | Blocking Immunity | Offset = +/- 1 MHz | - | 73 | - | dB |
| | | Offset = +/- 2 MHz | - | 78 | - | dB |
| | | Offset = +/- 10 MHz | - | 87 | - | dB |
| AMR | AM Rejection , AM modulated interferer with 100% modulation depth, fm = 1 kHz, square | Offset = +/- 1 MHz | - | 73 | - | dB |
| | | Offset = +/- 2 MHz | - | 78 | - | dB |
| | | Offset = +/- 10 MHz | - | 87 | - | dB |

| | | | | | | |
|---------|---|---|------------|----------------|--------|------------|
| IIP2 | 2nd order Input Intercept Point Unwanted tones are 20 MHz above the LO | Highest LNA gain | - | +57 | - | dBm |
| IIP3 | 3rd order Input Intercept point Unwanted tones are 1MHz and 1.995 MHz above the LO | Highest LNA gain G1 LNA gain G2, 4dB sensitivity hit | - - | -12 -8 | - - | dBm dBm |
| BW_SSB | Single Side channel filter BW | Programmable | 2.7 | - | 250 | kHz |
| IMR | Image Rejection | Wanted signal 3dB over sens BER=0.1% | - | 48 | - | dB |
| IMA | Image Attenuation | | - | 56 | - | dB |
| DR_RSSI | RSSI Dynamic Range | AGC enabled | Min Max | - -127 0 | - - | dBm dBm |

* $RxBw = 83 \text{ kHz}$ (Single Side Bandwidth)

** $RxBw = 50 \text{ kHz}$ (Single Side Bandwidth)

*** $RxBw = 250 \text{ kHz}$ (Single Side Bandwidth)

2.4.4. Transmitter

Table 7 Transmitter Specification

| Symbol | Description | Conditions | Min | Typ | Max | Unit |
|---------------------|--|--|-------------|----------------------|-------------|------------|
| RF_OP | RF output power in 50 ohms on RFO pin (High efficiency PA). | Programmable with steps Max Min | +11 - | +14 -1 | - - | dBm dBm |
| ΔRF_OP_V | RF output power stability on RFO pin versus voltage supply. | VDD = 2.5 V to 3.3 V VDD = 1.8 V to 3.7 V | - - | 3 8 | - - | dB dB |
| RF_OPH | RF output power in 50 ohms, on PA_BOOST pin (Regulated PA). | Programmable with 1dB steps Max Min | - - | +17 +2 | - - | dBm dBm |
| RF_OPH_MAX | Max RF output power, on PA_BOOST pin | High power mode | - | +20 | - | dBm |
| ΔRF_OPH_V | RF output power stability on PA_BOOST pin versus voltage supply. | VDD = 2.4 V to 3.7 V | - | ± 1 | - | dB |
| ΔRF_T | RF output power stability versus temperature on both RF pins. | From T = -40 °C to +85 °C | - | +/-1 | - | dB |
| PHN | Transmitter Phase Noise | Low Consumption PLL, 915 MHz 50kHz Offset 400kHz Offset 1MHz Offset | - - - | -102 -114 -120 | - - - | dBc/ Hz |
| | | Low Phase Noise PLL, 915 MHz 50kHz Offset 400kHz Offset 1MHz Offset | - - - | -106 -117 -122 | - - - | dBc/ Hz |

| | | | | | | |
|-------|--|---|---|-----|-----|-----|
| ACP | Transmitter adjacent channel power (measured at 25 kHz offset) | BT=1 . Measurement conditions as defined by EN 300 220-1 V2.3.1 | - | - | -37 | dBm |
| TS_TR | Transmitter wake up time, to the first rising edge of DCLK | Frequency Synthesizer enabled, PaRamp = 10us, BR = 4.8 kb/s | - | 120 | - | us |

2.4.5. Digital Specification

Conditions: Temp = 25°C, VDD = 3.3V, FXOSC = 32 MHz, unless otherwise specified.

Table 8 Digital Specification

| Symbol | Description | Conditions | Min | Typ | Max | Unit |
|---------------------|------------------------------------|---|-----|-----|-----|------|
| V _{IH} | Digital input level high | | 0.8 | - | - | VDD |
| V _{IL} | Digital input level low | | - | - | 0.2 | VDD |
| V _{OH} | Digital output level high | I _{max} = 1 mA | 0.9 | - | - | VDD |
| V _{OL} | Digital output level low | I _{max} = -1 mA | - | - | 0.1 | VDD |
| F _{SCK} | SCK frequency | | - | - | 10 | MHz |
| t _{ch} | SCK high time | | 50 | - | - | ns |
| t _{cl} | SCK low time | | 50 | - | - | ns |
| t _{rise} | SCK rise time | | - | 5 | - | ns |
| t _{fall} | SCK fall time | | - | 5 | - | ns |
| t _{setup} | MOSI setup time | from MOSI change to SCK rising edge | 30 | - | - | ns |
| t _{hold} | MOSI hold time | from SCK rising edge to MOSI change | 20 | - | - | ns |
| t _{nsetup} | NSS setup time | from NSS falling edge to SCK rising edge | 30 | - | - | ns |
| t _{nhold} | NSS hold time | from SCK falling edge to NSS rising edge, normal mode | 100 | - | - | ns |
| t _{nhigh} | NSS high time between SPI accesses | | 20 | - | - | ns |
| T_DATA | DATA hold and setup time | | 250 | - | - | ns |

3. Chip Description

This section describes in depth the architecture of the RFM66W low-power, highly integrated transceiver. The following figure shows a simplified block diagram of the RFM66W.

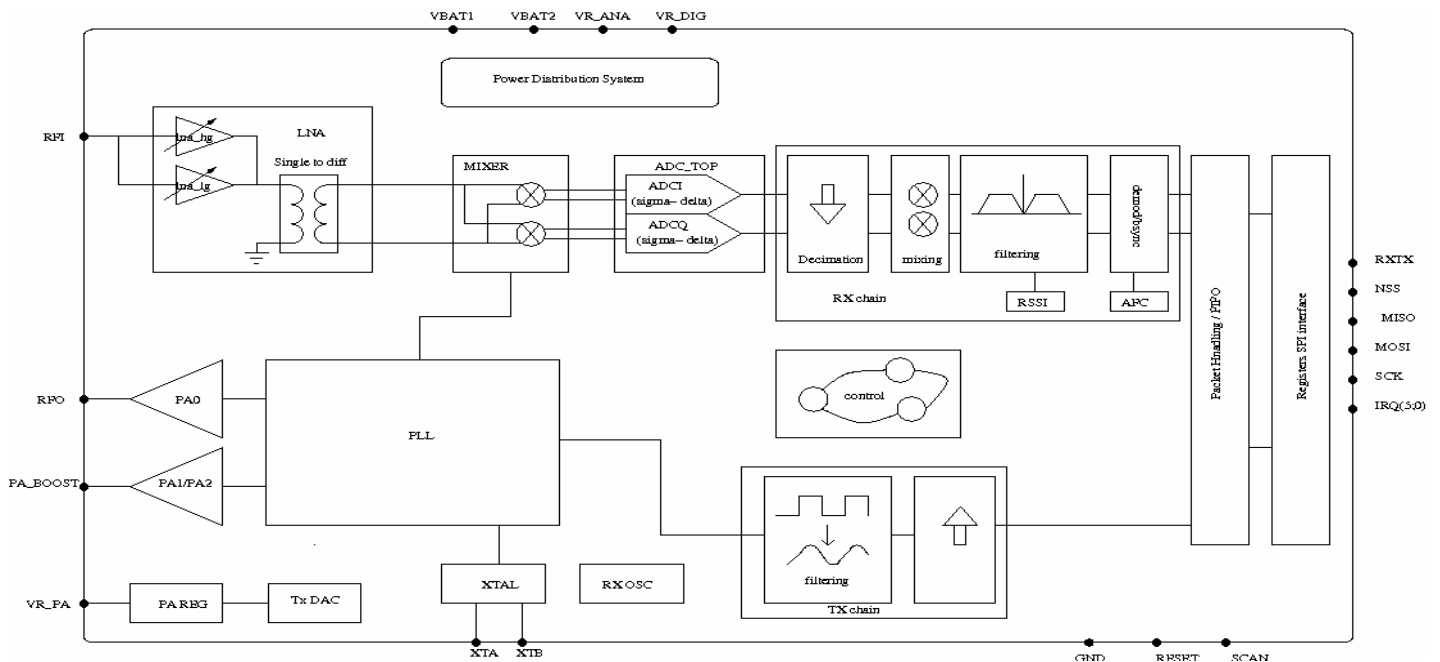


Figure 4. Simplified RFM66W Block Schematic Diagram

RFM66W is a half-duplex, low-IF transceiver. Here the received RF signal is first amplified by the LNA. The LNA input is single ended to minimise the external BoM and for ease of design. Following the LNA output, the conversion to differential is made to improve the second order linearity and harmonic rejection. The signal is then down-converted to in-phase (I) and quadrature (Q) components at the intermediate frequency (IF) by the mixer stage. A pair of sigma delta ADCs then perform data conversion, with all subsequent signal processing and demodulation performed in the digital domain. The digital state machine also controls the automatic frequency correction (AFC), received signal strength indicator (RSSI) and automatic gain control (AGC). It also features the higher-level packet and protocol level functionality of the top level sequencer.

In the receiver operating mode two states of functionality are defined. Upon initial transition to receiver operating mode the receiver is in the 'receiver-enabled' state. In this state the receiver awaits for either the user defined valid preamble or RSSI detection criterion to be fulfilled. Once met the receiver enters 'receiver-active' state. In this second state the received signal is processed by the packet engine and top level sequencer.

The frequency synthesiser generates the local oscillator (LO) frequency for both receiver and transmitter. The PLL is optimized for user-transparent low lock time and fast auto-calibrating operation. In transmission, frequency modulation is performed digitally within the PLL bandwidth. It also features optional pre-filtering of the bit stream to improve spectral purity.

RFM66W features a pair of RF power amplifiers. The first, connected to RFO, can deliver up to +14 dBm, is unregulated for high power efficiency and can be connected directly to the RF receiver input via a pair of passive components to form a single antenna port high efficiency transceiver. The second PA, connected to the PA_BOOST pin and can deliver up to +20 dBm via a dedicated matching network.

RFM66W also includes two timing references: an RC oscillator and a 32 MHz crystal oscillator.

All major parameters of the RF front end and digital state machine are fully configurable via an SPI interface which gives access to internal registers. This includes a mode auto sequencer that oversees the transition and calibration of the RFM66W between intermediate modes of operation in the fastest time possible.

3.1. Power Supply Strategy

The RFM66W employs an advanced power supply scheme, which provides stable operating characteristics over the full temperature and voltage range of operation. This includes the full output power of +17dBm which is maintained from 1.8 to 3.7 V.

The RFM66W can be powered from any low-noise voltage source via pins VBAT1 and VBAT2. Decoupling capacitors should be connected, as suggested in the reference design, on VR_PA, VR_DIG and VR_ANA pins to ensure a correct operation of the built-in voltage regulators.

3.2. Low Battery Detector

A low battery detector is also included allowing the generation of an interrupt signal in response to passing a programmable threshold adjustable through the register *RegLowBat*. The interrupt signal can be mapped to any of the DIO pins, by programming *RegDioMapping*.

3.3. Frequency Synthesis

3.3.1. Reference Oscillator

The crystal oscillator is the main timing reference of the RFM66W. It is used as a reference for the frequency synthesizer and as a clock for the digital processing.

The XO startup time, TS_OSC , depends on the actual XTAL being connected on pins XTA and XTB. The RFM66W optimizes the startup time and automatically triggers the PLL when the XO signal is stable.

An external clock can be used to replace the crystal oscillator, for instance a tight tolerance TCXO. To do so, $TcxoInputOn$ in $RegTcxo$ should be set to 1, and the external clock has to be provided on XTA (pin 4). XTB (pin 5) should be left open.

The peak-peak amplitude of the input signal must never exceed 1.8 V. Please consult your TCXO supplier for an appropriate value of decoupling capacitor, C_D .

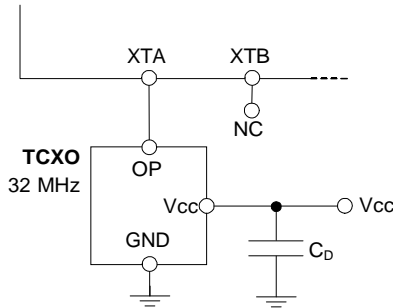


Figure 5. TCXO Connection

3.3.2. CLKOUT Output

The reference frequency, or a fraction of it, can be provided on DIO5 (pin 12) by modifying bits $ClkOut$ in $RegDioMapping2$. Two typical applications of the CLKOUT output include:

- To provide a clock output for a companion processor, thus saving the cost of an additional oscillator. CLKOUT can be made available in any operation mode except Sleep mode and is automatically enabled at power on reset.
- To provide an oscillator reference output. Measurement of the CLKOUT signal enables simple software trimming of the initial crystal tolerance.

Note to minimize the current consumption of the RFM66W, please ensure that the CLKOUT signal is disabled when not required.

3.3.3. PLL Architecture

The local oscillator of the RFM66W is derived from a fractional-N PLL that is referenced to the crystal oscillator circuit. Two PLLs are available for transmit mode operation - either low phase noise or low current consumption to maximize either transmit power consumption or transmit spectral purity. Both PLLs feature a programmable bandwidth setting where one of four discrete preset bandwidths may be accessed. For reference the relative performance of both low consumption and low phase noise PLL, for each programmable bandwidth setting, is shown in the following figure.

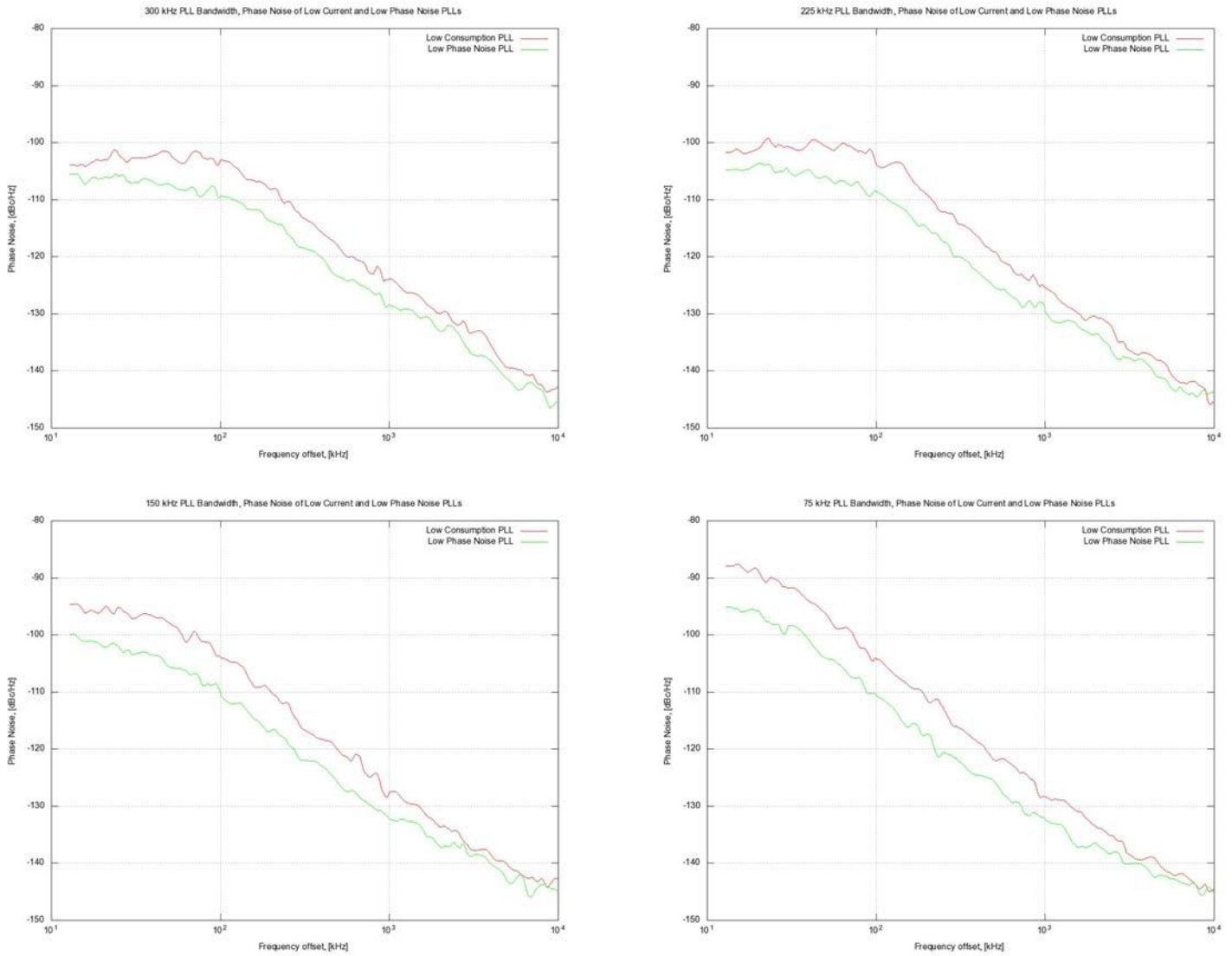


Figure 6. Typical Phase Noise Performances of the Low Consumption and Low Phase Noise PLLs.

Note in receive mode, only the low consumption PLL is available.

The RFM66W PLL embeds a 19-bit sigma-delta modulator and its frequency resolution, constant over the whole frequency range, and is given by:

$$F_{STEP} = \frac{F_{XOSC}}{2^{19}}$$

The carrier frequency is programmed through *RegFrf*, split across addresses 0x06 to 0x08:

$$F_{RF} = F_{STEP} \times Frf(23,0)$$

Note The *Frf* setting is split across 3 bytes. A change in the center frequency will only be taken into account when the least significant byte *FrfLsb* in *RegFrfLsb* is written. This allows for more complex modulation schemes such as *m*-ary FSK, where frequency modulation is achieved by changing the programmed RF frequency.

3.3.4. RC Oscillator

All timings in the low-power state of the Top Level Sequencer rely on the accuracy of the internal low-power RC oscillator. This oscillator is automatically calibrated at the device power-up, and it is a user-transparent process.

For applications enduring large temperature variations, and for which the power supply is never removed, RC calibration can be performed upon user request. *RcCalStart* in *RegOsc* triggers this calibration, and the flag *RcCalDone* will be set automatically when the calibration is over.

3.4. Transmitter Description

The transmitter of RFM66W comprises the frequency synthesizer, modulator and power amplifier blocks, together with the DC biasing and ramping functionality that is provided through the VR_PA block.

3.4.1. Architecture Description

The architecture of the RF front end is shown in the following diagram. Here we see that the unregulated PA0 is connected to the RFO pin features a single low power amplifier device. The PA_BOOST pin is connected to the internally regulated PA1 and PA2 circuits. Here PA2 is a high power amplifier that permits continuous operation up to +17 dBm and duty cycled operation up to +20 dBm. For full details of operation at +20 dBm please consult Section 3.4.7.

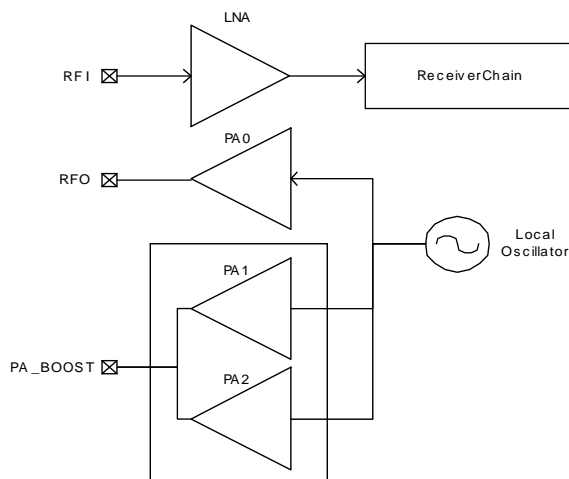


Figure 7. RF Front-end Architecture Shows the Internal PA Configuration.

3.4.2. Bit Rate Setting

The bitrate setting is referenced to the crystal oscillator and provides a precise means of setting the bit (or equivalently chip) rate of the radio. In continuous transmit mode (Section 3.2.2) the data stream to be transmitted can be input directly to the modulator via pin 9 (DIO2/DATA) in an asynchronous manner, unless Gaussian filtering is used, in which case the DCLK signal on pin 10 (DIO1/DCLK) is used to synchronize the data stream. See section 3.4.5 for details on the Gaussian filter.

In Packet mode or in Continuous mode with Gaussian filtering enabled, the Bit Rate (BR) is controlled by bits *Bitrate* in *RegBitrateMsb* and *RegBitrateLsb*

$$BitRate = \frac{FXOSC}{BitRate(15,0) + \frac{BitrateFrac}{16}}$$

Note *BitrateFrac* bits have **no effect** (i.e may be considered equal to 0) in **OOK** modulation mode

The quantity *BitrateFrac* is hence designed to allow very high precision (max. 250 ppm calculation error) for any bitrate in the programmable range. Table 9 below shows a range of standard bitrates and the accuracy to within which they may be reached.

Table 9 Bit Rate Examples

| Type | BitRate (15:8) | BitRate (7:0) | (G)FSK (G)MSK | OOK | Actual BR (b/s) |
|---|----------------|---------------|---------------|-------------|-----------------|
| Classical modem baud rates (multiples of 1.2 kbps) | 0x68 | 0x2B | 1.2 kbps | 1.2 kbps | 1200.015 |
| | 0x34 | 0x15 | 2.4 kbps | 2.4 kbps | 2400.060 |
| | 0x1A | 0x0B | 4.8 kbps | 4.8 kbps | 4799.760 |
| | 0x0D | 0x05 | 9.6 kbps | 9.6 kbps | 9600.960 |
| | 0x06 | 0x83 | 19.2 kbps | 19.2 kbps | 19196.16 |
| | 0x03 | 0x41 | 38.4 kbps | | 38415.36 |
| | 0x01 | 0xA1 | 76.8 kbps | | 76738.60 |
| | 0x00 | 0xD0 | 153.6 kbps | | 153846.1 |
| Classical modem baud rates (multiples of 0.9 kbps) | 0x02 | 0x2C | 57.6 kbps | | 57553.95 |
| | 0x01 | 0x16 | 115.2 kbps | | 115107.9 |
| Round bit rates (multiples of 12.5, 25 and 50 kbps) | 0x0A | 0x00 | 12.5 kbps | 12.5 kbps | 12500.00 |
| | 0x05 | 0x00 | 25 kbps | 25 kbps | 25000.00 |
| | 0x80 | 0x00 | 50 kbps | | 50000.00 |
| | 0x01 | 0x40 | 100 kbps | | 100000.0 |
| | 0x00 | 0xD5 | 150 kbps | | 150234.7 |
| | 0x00 | 0xA0 | 200 kbps | | 200000.0 |
| | 0x00 | 0x80 | 250 kbps | | 250000.0 |
| | 0x00 | 0x6B | 300 kbps | | 299065.4 |
| Watch Xtal frequency | 0x03 | 0xD1 | 32.768 kbps | 32.768 kbps | 32753.32 |

3.4.3. FSK Modulation

FSK modulation is performed inside the PLL bandwidth, by changing the fractional divider ratio in the feedback loop of the PLL. The large resolution of the sigma-delta modulator, allows for very narrow frequency deviation. The frequency deviation F_{DEV} is given by:

$$F_{DEV} = F_{STEP} \times Fdev(13,0)$$

To ensure a proper modulation, the following limit applies:

$$F_{DEV} + \frac{BR}{2} \leq (250)kHz$$

Note no constraint applies to the modulation index of the transmitter, but the frequency deviation must be set between 600 Hz and 200 kHz.

3.4.4. OOK Modulation

OOK modulation is applied by switching on and off the Power Amplifier. Digital control and smoothing are available to improve the transient power response of the OOK transmitter.

3.4.5. Modulation Shaping

Modulation shaping can be applied in both OOK and FSK modulation modes, to improve the narrowband response of the transmitter. Both shaping features are controlled with *PaRamp* bits in *RegPaRamp*.

- In FSK mode, a Gaussian filter with $BT = 0.5$ or 1 is used to filter the modulation stream, at the input of the sigma-delta modulator. If the Gaussian filter is enabled when the RFM66W is in Continuous mode, DCLK signal on pin 10 (DIO1/ DCLK) will trigger an interrupt on the uC each time a new bit has to be transmitted. Please refer to section 5.4.2 for details.
- When OOK modulation is used, the PA bias voltages are ramped up and down smoothly when the PA is turned on and off, to reduce spectral splatter.

Note the transmitter must be restarted if the *ModulationShaping* setting is changed, in order to recalibrate the built-in filter.

3.4.6. RF Power Amplifiers

Three power amplifier blocks are embedded in the RFM66W. The first one herein referred to as PA0, can generate high efficiency RF power into a 50 ohm load. The RF power is programmable between -1dBm and +14dBm. PA0 is connected to pin RFO (pin 22).

PA1 and PA2 are both connected to pin PA_BOOST (pin 23). They can deliver up to +17 dBm in programmable step of 1dB to the antenna, a specific impedance matching / harmonic filtering design is required to ensure impedance transformation and regulatory compliance. The RF power is programmable between +2 dBm and +17 dBm. The high power mode allows to achieve fixed output power of +20dBm.

Table 10 Power Amplifier Mode Selection Truth Table

| <i>PaSelect</i> | <i>Mode</i> | <i>Power Range</i> | <i>Pout Formula</i> |
|-----------------|--|--------------------|-----------------------------|
| 0 | PA0 output on pin RFO | -1 to +14 dBm | -1 dBm + <i>OutputPower</i> |
| 1 | PA1 and PA2 combined on pin PA_BOOST | +2 to +17 dBm | +2 dBm + <i>OutputPower</i> |
| 1 | PA1+PA2 on PA_BOOST with high output power +20dBm settings (see 3.4.7) | +5 to +20 dBm | +5 dBm + <i>OutputPower</i> |

Notes - For +20dBm restrictions of operation, please consult the following section

- To ensure correct operation at the highest power levels, please make sure to adjust the *OcpTrim* accordingly in *RegOcp*.

- If *PA_BOOST* pin is not used the pin can be left floating.

3.4.7. High Power +20dBm Operation

The RFM66W has a high power +20 dBm capability on PA_BOOST pin, with the following settings:

Table 11 High Power Settings

| Register | Address | Value for High Power | Default value PA0 or +17dBm | Description |
|----------|---------|----------------------|-----------------------------|-----------------------|
| RegPaDac | 0x5A | 0x87 | 0x84 | High power PA control |

- Note
- High Power settings must be turned off when using PA0
 - The Over Current Protection limit should be adapted to the actual power level, in RegOcp

Specific Absolute Maximum Ratings and Operating Range restrictions apply to the +20dBm operation. They are listed in Table 12 and Table 13.

Table 12 Absolute Maximum Rating, +20dBm Operation

| Symbol | Description | Min | Max | Unit |
|------------|---|-----|-----|------|
| DC_20dBm | Duty Cycle of transmission at +20dBm output | - | 1 | % |
| VSWR_20dBm | Maximum VSWR at antenna port, +20dBm output | - | 3:1 | - |

Table 13 Operating Range, +20dBm Operation

| Symbol | Description | Min | Max | Unit |
|-------------|-------------------------------|-----|-----|------|
| VDDop_20dBm | Supply voltage, +20dBm output | 2.4 | 3.7 | V |

The Duty Cycle of transmission at +20dBm is limited to 1%, with a maximum VSWR of 3:1 at antenna port, over the standard operating range [-40;+85°C]. For any other operating condition, contact your Semtech representative.

3.4.8. Over Current Protection

An over current protection block is built-in the chip. It helps preventing surge currents required when the transmitter is used at its highest power levels, thus protecting the battery that may power the application. The current clamping value is controlled by *OcpTrim* bits in *RegOcp*, and is calculated with the following formulas:

Table 14 *Trimming of the OCP Current*

| <i>OcpTrim</i> | I_{MAX} | <i>Imax</i> Formula |
|----------------|---------------|---------------------------|
| 0 to 15 | 45 to 120 mA | $45 + 5 * OcpTrim$ [mA] |
| 16 to 27 | 130 to 240 mA | $-30 + 10 * OcpTrim$ [mA] |
| 27+ | 240 mA | 240 mA |

Note *Imax* sets a limit on the current drain of the Power Amplifier only, hence the maximum current drain of the RFM66W is equal to $I_{max} + I_{FS}$

3.5. Receiver Description

3.5.1. Overview

The RFM66W features a digital receiver with the analog to digital conversion process being performed directly following the LNA-Mixers block. The Low-IF receiver is able to handle ASK, OOK, (G)FSK and (G)MSK modulation. All the filtering, demodulation, gain control, synchronization and packet handling is performed digitally, which allows a very wide range of bit rates and frequency deviations to be selected. The receiver is also capable of automatic gain calibration to improve precision on RSSI measurement and enhanced image rejection.

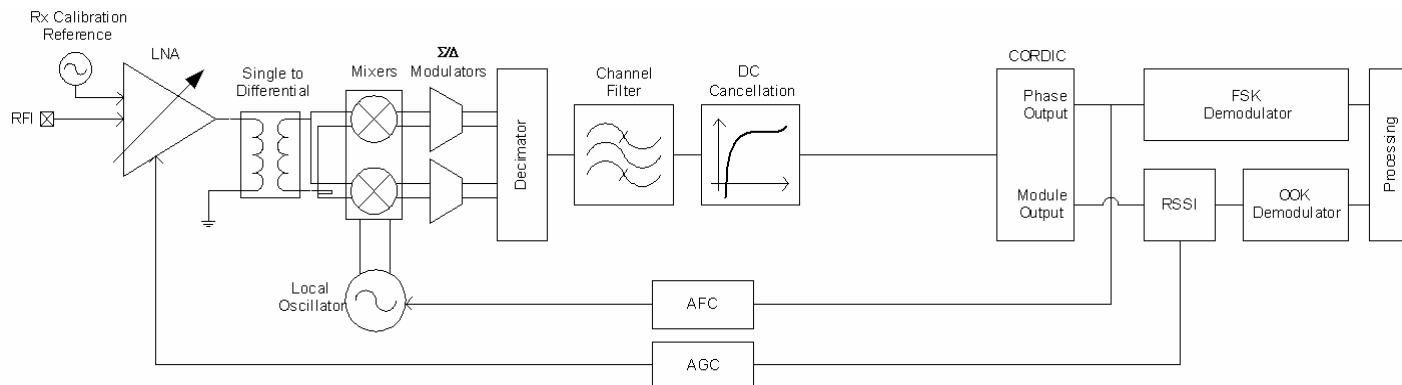


Figure 8. Receiver Block Diagram

3.5.2. Automatic Gain Control - AGC

The AGC feature allows receiver to handle a wide Rx input dynamic range from the sensitivity level up to maximum input level of 0dBm or more, whilst optimizing the system linearity.

The automatic LNA gain control is effective by setting the bit *AgcAutoOn* to '1'. The automatic adjustment of the LNA gain can be performed on the Rx input level (*Pin*) at receiver start up and/or during the Preamble reception. The automatic adjustment of the LNA during the Preamble is effective by setting the bit *AgcOnPreamble* to '1' otherwise it will be performed only at the receiver start up.

The LNA gain can also be manually selected using *LnaGain* bits and by disabling the automatic LNA gain control by setting the *AgcAutoOn* bit to '0'.

Table 15 hereafter shows typical NF and IIP3 performances for the different LNA gains.

Table 15 LNA Gain Control and Performances

| RX input level (<i>Pin</i>) | Gain Setting | LnaGain | Relative LNA Gain [dB] | NF [dB] | IIP3 [dBm] |
|------------------------------------|--------------|---------|------------------------|---------|------------|
| $Pin \leq AgcThresh1$ | G1 | '001' | 0 dB | 7 | -12 |
| $AgcThresh1 < Pin \leq AgcThresh2$ | G2 | '010' | -6 dB | 11 | -8 |
| $AgcThresh2 < Pin \leq AgcThresh3$ | G3 | '011' | -12 dB | 16 | -5 |

| <i>RX input level (Pin)</i> | <i>Gain Setting</i> | <i>LnaGain</i> | <i>Relative LNA Gain [dB]</i> | <i>NF [dB]</i> | <i>IIP3 [dBm]</i> |
|--------------------------------|---------------------|----------------|-------------------------------|----------------|-------------------|
| AgcThresh3 < Pin <= AgcThresh4 | G4 | '100' | -24 dB | 26 | 5 |
| AgcThresh4 < Pin <= AgcThresh5 | G5 | '110' | -26 dB | 34 | 10 |
| AgcThresh5 < Pin | G6 | '111' | -48 dB | 44 | 10 |

3.5.3. Enabling the Demodulation

At receiver start up, the AGC and AFC features are preformed before providing reliable demodulated data to FIFO or DATA pin. Table 16 hereafter allows the user to set under which criteria he likes to start demodulating data.

Table 16 *Data Output Conditions.*

| <i>* Data ouput conditions</i> | <i>StartDemodOnRSSI</i> | <i>StartDemodOnPreamble</i> |
|----------------------------------|-------------------------|-----------------------------|
| None (immediate) | 0 | 0 |
| <i>PreambleDetect</i> | 0 | 1 |
| <i>Rssi</i> | 1 | 0 |
| <i>PreambleDetect & Rssi</i> | 1 | 1 |

The flowchart of the following figure shows the processing events of *AgcAutoOn*, *AgcOnPreamble* and *AfcAutoOn* control bits at receiver starts up. Finally, when processing events are done and the data output conditions are verified according to Table 16, reliable data starts to be demodulated.

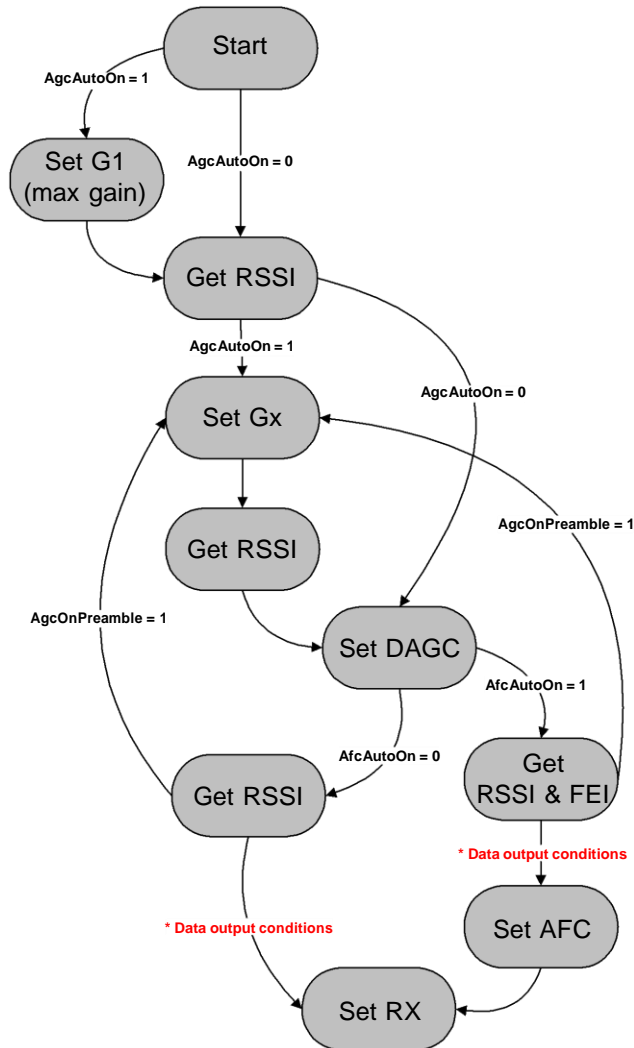


Figure 9. Receiver Startup Process.

3.5.4. RSSI

The RSSI value reflects the incoming signal power provided at antenna port within the receiver bandwidth. The signal power is available in *RssiValue*. This value is absolute and its unit is in dBm with a resolution of 0.5dB. The formula hereafter gives the relationship between the register value and the absolute input signal level in dBm at antenna port:

$$RssiValue = -2 \cdot RF\ level [dBm] + RssiOffset [dB]$$

The RSSI value can be compensated for to take into account the loss in the matching network or the gain of an additional LNA, by using *RssiOffset*. The offset can be chosen in 1dB steps from -16 to +15dB. When compensation is applied, the effective signal strength is read as follows:

$$RSSI [dBm] = -\frac{RssiValue}{2}$$

The RSSI value is smoothed on a given number of measured RSSI samples. The precision of the RSSI value is related to the number of RSSI samples used. *RssiSmoothing* selects the number of RSSI samples from a minimum of 2 samples up to 256 samples in increments of power of 2. Table 17 hereafter gives the estimation of the RSSI accuracy for a 10dB SNR and the response time versus the number of RSSI samples selected in *RssiSmoothing*.

Table 17 *RssiSmoothing* Options

| <i>RssiSmoothing</i> | Number of Samples | Estimated Accuracy | Response Time |
|----------------------|-------------------|--------------------|---|
| '000' | 2 | ± 6dB | $\frac{2^{(RssiSmoothing+1)}}{4 \cdot RxBw [kHz]} [ms]$ |
| '001' | 4 | ± 5dB | |
| '010' | 8 | ± 4dB | |
| '011' | 16 | ± 3dB | |
| '100' | 32 | ± 2dB | |
| '101' | 64 | ± 1.5dB | |
| '110' | 128 | ± 1.2dB | |
| '111' | 256 | ± 1.1dB | |

The RSSI is calibrated, up the RFI pin, when Image and Rssi calibration is launched; please see section 3.5.13 for details.

3.5.5. Channel Filter

The role of the channel filter is to filter out the noise and interferers outside of the channel. Channel filtering on the RFM66W is implemented with a 16-tap Finite Impulse Response (FIR) filter, providing an outstanding Adjacent Channel Rejection performance, even for narrowband applications.

Note to respect oversampling rules in the decimation chain of the receiver, the Bit Rate cannot be set at a higher value than 2 times the single-side receiver bandwidth ($BitRate < 2 \times RxBw$)

The single-side channel filter bandwidth *RxBw* is controlled by the parameters *RxBwMant* and *RxBwExp* in *RegRxBw*:

$$RxBw = \frac{FXOSC}{RxBwMant \times 2^{RxBwExp + 2}}$$

The following channel filter bandwidths are accessible (oscillator is mandated at 32 MHz):

Table 18 Available RxBw Settings

| RxBwMant (binary/value) | RxBwExp (decimal) | RxBw (kHz) |
|----------------------------|----------------------|------------|
| | | FSK / OOK |
| 10b / 24 | 7 | 2.6 |
| 01b / 20 | 7 | 3.1 |
| 00b / 16 | 7 | 3.9 |
| 10b / 24 | 6 | 5.2 |
| 01b / 20 | 6 | 6.3 |
| 00b / 16 | 6 | 7.8 |
| 10b / 24 | 5 | 10.4 |
| 01b / 20 | 5 | 12.5 |
| 00b / 16 | 5 | 15.6 |
| 10b / 24 | 4 | 20.8 |
| 01b / 20 | 4 | 25.0 |
| 00b / 16 | 4 | 31.3 |
| 10b / 24 | 3 | 41.7 |
| 01b / 20 | 3 | 50.0 |
| 00b / 16 | 3 | 62.5 |
| 10b / 24 | 2 | 83.3 |
| 01b / 20 | 2 | 100.0 |
| 00b / 16 | 2 | 125.0 |
| 10b / 24 | 1 | 166.7 |
| 01b / 20 | 1 | 200.0 |
| 00b / 16 | 1 | 250.0 |
| 10b / 24 | reserved | |
| 01b / 20 | | |
| 00b / 16 | | |

3.5.6. FSK Demodulator

The FSK demodulator of the RFM66W is designed to demodulate FSK, GFSK, MSK and GMSK modulated signals. It is most efficient when the modulation index of the signal is greater than 0.5 and below 10:

$$0.5 \leq \beta = \frac{2 \times F_{DEV}}{BR} \leq 10$$

The output of the FSK demodulator can be fed to the Bit Synchronizer to provide the companion processor with a synchronous data stream in Continuous mode.

3.5.7. OOK Demodulator

The OOK demodulator performs a comparison of the RSSI output and a threshold value. Three different threshold modes are available, configured through bits *OokThreshType* in *RegOokPeak*.

The recommended mode of operation is the "Peak" threshold mode, illustrated in Figure 10:

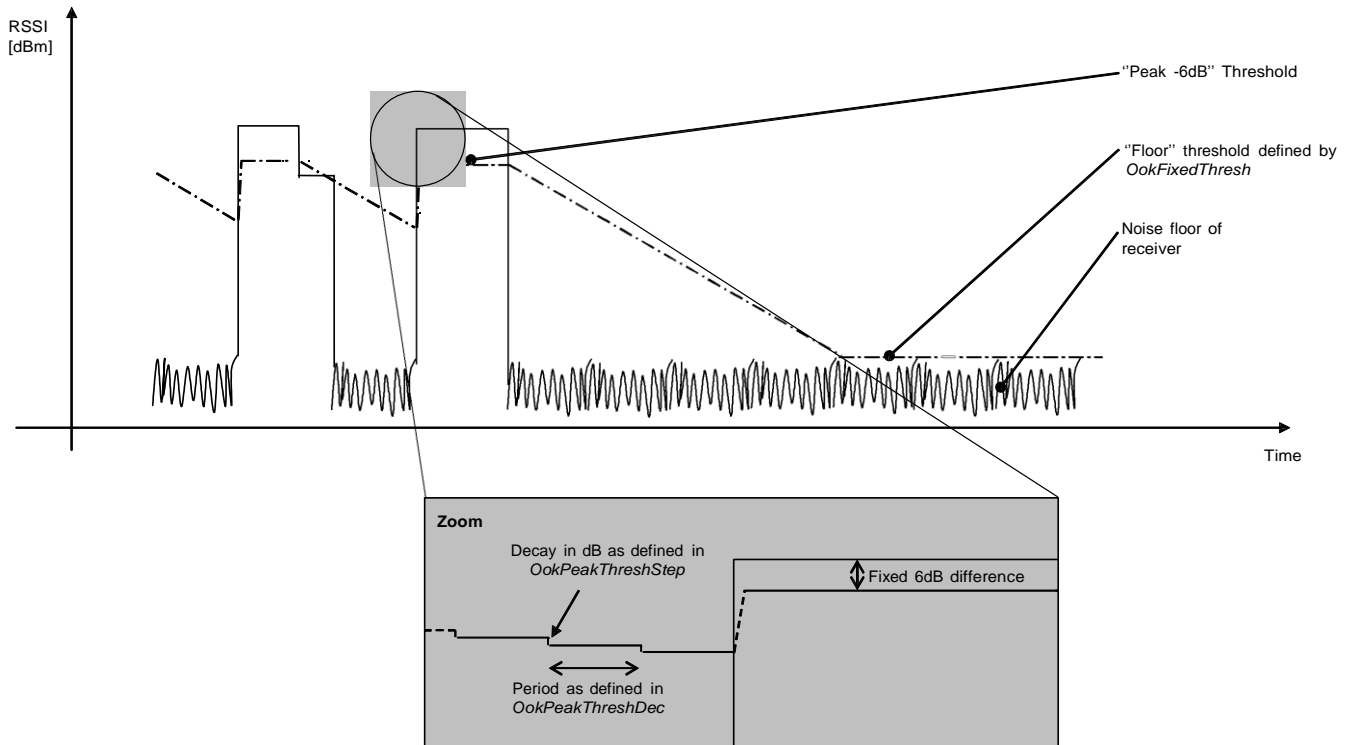


Figure 10. OOK Peak Demodulator Description

In peak threshold mode the comparison threshold level is the peak value of the RSSI, reduced by 6dB. In the absence of an input signal, or during the reception of a logical "0", the acquired peak value is decremented by one *OokPeakThreshStep* every *OokPeakThreshDec* period.

When the RSSI output is null for a long time (for instance after a long string of "0" received, or if no transmitter is present), the peak threshold level will continue falling until it reaches the "Floor Threshold", programmed in *OokFixedThresh*.

The default settings of the OOK demodulator lead to the performance stated in the electrical specification. However, in applications in which sudden signal drops are awaited during a reception, the three parameters should be optimized accordingly.

3.5.7.1. Optimizing the Floor Threshold

OokFixedThresh determines the sensitivity of the OOK receiver, as it sets the comparison threshold for weak input signals (i.e. those close to the noise floor). Significant sensitivity improvements can be generated if configured correctly.

Note that the noise floor of the receiver at the demodulator input depends on:

- The noise figure of the receiver.
- The gain of the receive chain from antenna to base band.
- The matching - including SAW filter if any.
- The bandwidth of the channel filters.

It is therefore important to note that the setting of *OokFixedThresh* will be application dependant. The following procedure is recommended to optimize *OokFixedThresh*.

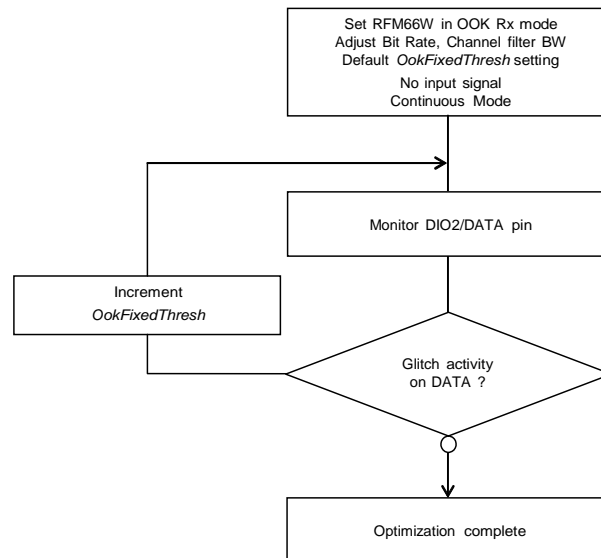


Figure 11. Floor Threshold Optimization

The new floor threshold value found during this test should be used for OOK reception with those receiver settings.

3.5.7.2. Optimizing OOK Demodulator for Fast Fading Signals

A sudden drop in signal strength can cause the bit error rate to increase. For applications where the expected signal drop can be estimated, the following OOK demodulator parameters *OokPeakThreshStep* and *OokPeakThreshDec* can be optimized as described below for a given number of threshold decrements per bit. Refer to *RegOokPeak* to access those settings.

3.5.7.3. Alternative OOK Demodulator Threshold Modes

In addition to the Peak OOK threshold mode, the user can alternatively select two other types of threshold detectors:

- Fixed Threshold: The value is selected through *OokFixedThresh*
- Average Threshold: Data supplied by the RSSI block is averaged, and this operation mode should only be used with DC-free encoded data.

3.5.8. Bit Synchronizer

The Bit Synchronizer is a block that provides a clean and synchronized digital output, free of glitches. Its output is made available on pin DIO1/DCLK in Continuous mode and can be disabled through register settings. However, for optimum receiver performance its use when running Continuous mode is strongly advised.

The Bit Synchronizer is automatically activated in Packet mode. Its bit rate is controlled by *BitRateMsb* and *BitRateLsb* in *RegBitrate*.

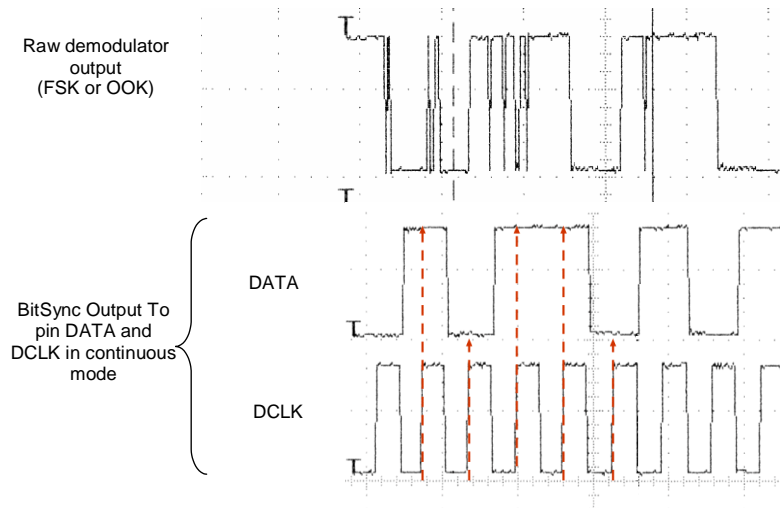


Figure 12. Bit Synchronizer Description

To ensure correct operation of the Bit Synchronizer, the following conditions have to be satisfied:

- A preamble (0x55 or 0xAA) of at least 12 bits is required for synchronization, the longer the synchronization the better the packet error rate
- The subsequent payload bit stream must have at least one transition from '0' to '1' or '1' to '0' every 16 bits during data transmission
- The bit rate matching between the transmitter and the receiver must be better than 6.5 %.

3.5.9. Frequency Error Indicator

This function provides information about the frequency error of the local oscillator (LO) compared with the carrier frequency of a modulated signal at the input of the receiver. When the FEI block is launched, the frequency error is measured and the signed result is loaded in *FeiValue* in *RegFei*, in 2's complement format. The time required for an FEI evaluation is 4 times the bit period.

To ensure a proper behavior of the FEI:

- The operation must be done during the reception of preamble
- The sum of the frequency offset and the 20 dB signal bandwidth must be lower than the base band filter bandwidth

The 20 dB bandwidth of the signal can be evaluated as follows (double-side bandwidth):

$$BW_{20dB} = 2 \times \left(F_{DEV} + \frac{BR}{2} \right)$$

The frequency error, in Hz, can be calculated with the following formula:

$$FEI = F_{STEP} \times FeiValue$$

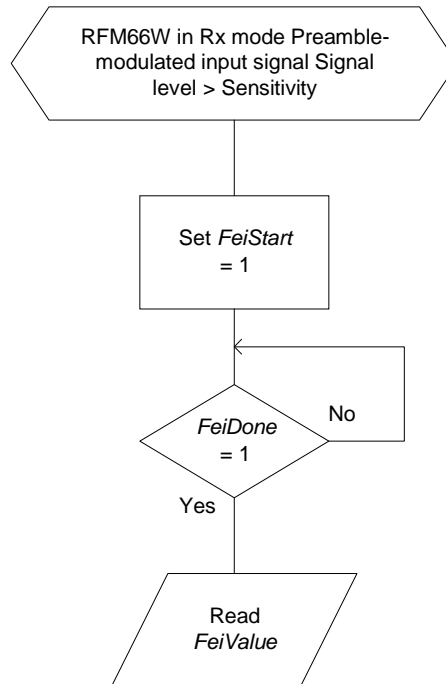


Figure 13. FEI Process

3.5.10. AFC

The AFC is based on the FEI block, and therefore the same input signal and receiver setting conditions apply. When the AFC procedure is done, *AfcValue* is directly subtracted to the register that defines the frequency of operation of the chip, F_{RF} . The AFC is executed each time the receiver is enabled, if *AfcAutoOn* = 1.

When the AFC is enabled (*AfcAutoOn* = 1), the user has the option to:

- Clear the former AFC correction value, if *AfcAutoClearOn* = 1
- Start the AFC evaluation from the previously corrected frequency. This may be useful in systems in which the LO keeps on drifting in the “same direction”. Ageing compensation is a good example.

The RFM66W offers an alternate receiver bandwidth setting during the AFC phase, to accommodate large LO drifts. If the user considers that the received signal may be out of the receiver bandwidth, a higher channel filter bandwidth can be programmed in *RegAfcBw*, at the expense of the receiver noise floor, which will impact upon sensitivity.

The FEI is valid only during preamble, and therefore the *PreambleDetect* flag can be used to validate the current FEI result and add it to the AFC register. The link between *PreambleDetect* interrupt and the AFC is controlled by *StartDemodOnPreamble* in *RegRxConfig*.

3.5.11. Preamble Detector

The Preamble Detector indicates the reception of a carrier modulated with a 0101...sequence. It is insensitive to the frequency offset, as long as the receiver bandwidth is large enough. The size of detection can be programmed from 1 to 3 bytes with *PreambleDetectorSize* in *RegPreambleDetect* as defined in the next table.

Table 19 Preamble Detector Settings

| <i>PreambleDetectorSize</i> | # of Bytes |
|-----------------------------|-----------------|
| 00 | 1 |
| 01 | 2 (recommended) |
| 10 | 3 |
| 11 | reserved |

For proper operation, *PreambleDetectTol* should be set to be set to 10 (0x0A), with a qualifying preamble size of 2 bytes.

PreambleDetect interrupt (either in *RegIrqFlags1* or mapped to a specific DIO) goes high every time a valid preamble is detected, assuming *PreambleDetectorOn*=1.

The preamble detector can also be used to ensure that AFC and AGC are performed on valid preamble. See Figure 9 for details.

3.5.12. Image Rejection Mixer

The RFM66W embeds a state of the art Image Rejection Mixer (IRM). Its default rejection, with no calibration, is 35dB typ.

The IQ signals can be calibrated by an embedded source, pushing the image rejection to typically 48dB. This process is fully automated and self-contained.

3.5.13. Image and RSSI Calibration

Calibration of the I and Q signal is required to improve the RSSI precision, as well as good Image Rejection performance. On the RFM66W, IQ calibration is seamless and user-transparent. Calibration is launched:

- Automatically at Power On Reset or after a Manual Reset of the chip (refer to section 7.2). For applications where the temperature remains stable, or if the Image Rejection is not a major concern, this one-shot calibration will suffice
- Automatically when a pre-defined temperature change is observed
- Upon User request, by setting bit *ImageCalStart* in *RegImageCal*

A selectable temperature change, set with *TempThreshold* (5, 10, 15 or 20°C), is detected and reported in *TempChange*, if the temperature monitoring is turned On with *TempMonitorOff*=0.

This interrupt flag can be used by the application to launch a new Image Calibration at a convenient time if *AutoImageCalOn*=0, or immediately when this temperature variation is detected, if *AutoImageCalOn*=1.

The calibration process takes approximately 10ms.

3.6. Temperature Measurement

A stand alone temperature measurement block is used in order to measure the temperature in any mode except Sleep and Standby. It is enabled by default, and can be stopped by setting *TempMonitorOff* to 1. The result of the measurement is stored in *TempValue* in *RegTemp*.

Due to process variations, the absolute accuracy of the result is +/- 10 °C. A more precise result needs initial calibration to be done externally.

Example temperature curve, typical device

| Correction Factor 15 | | | |
|-----------------------|---------------|------------------------------|-----------------------------|
| Actual Temp [Celsius] | RegTemp [Dec] | Temp before calibration [°C] | Temp after calibration [°C] |
| 85 | 181 | 74 | 89 |
| 75 | 190 | 65 | 80 |
| 65 | 201 | 54 | 69 |
| 55 | 211 | 44 | 59 |
| 45 | 222 | 33 | 48 |
| 35 | 232 | 23 | 38 |
| 25 | 245 | 10 | 25 |
| 15 | 0 | 0 | 15 |
| 5 | 10 | -10 | 5 |
| -5 | 21 | -21 | -6 |
| -15 | 33 | -33 | -18 |
| -25 | 44 | -44 | -29 |
| -35 | 56 | -56 | -41 |
| -40 | 63 | -63 | -48 |

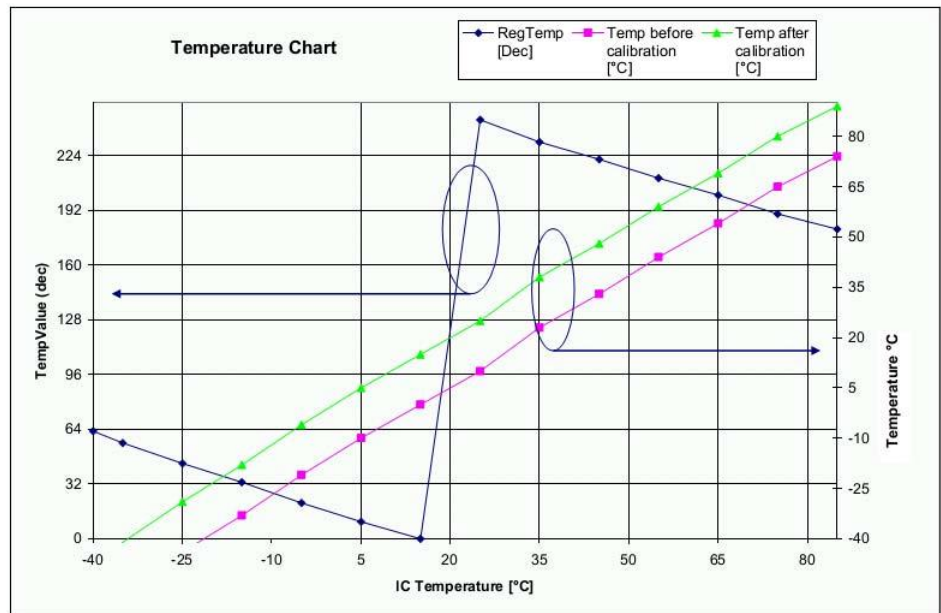


Figure 14. Temperature Sensor Response

An example code for the conversion to be applied to *TempValue* to obtain the reading in °C is shown in Section 7.

3.7. Timeout Function

The RFM66W includes a Timeout function, which allows it to automatically shut-down the receiver after a receive sequence and therefore save energy.

- Timeout interrupt is generated $TimeoutRxRssi \times 16 \times Tbit$ after switching to Rx mode if the *Rssi* flag does not raise within this time frame ($RssiValue > RssiThreshold$)
- Timeout interrupt is generated $TimeoutRxPreamble \times 16 \times Tbit$ after switching to Rx mode if the *PreambleDetect* flag does not raise within this time frame
- Timeout interrupt is generated $TimeoutSignalSync \times 16 \times Tbit$ after switching to Rx mode if the *SyncAddress* flag does not raise within this time frame

This timeout interrupt can be used to warn the companion processor to shut down the receiver and return to a lower power mode.

4. Operating Modes

4.1. General Overview

The RFM66W has several working modes, manually programmed in *RegOpMode*. Fully automated mode selection, packet transmission and reception is also possible using the Top Level Sequencer described in Section 4.3.

Table 20 Basic Transceiver Modes

| Mode | Selected mode | Enabled blocks |
|------|---|---|
| 000 | Sleep mode | None |
| 001 | Standby mode | Top regulator and crystal oscillator |
| 010 | FSTx: Frequency synthesiser to Tx frequency | Frequency synthesizer at Tx frequency (Frf) |
| 011 | Transmit mode (Tx) | Frequency synthesizer and transmitter |
| 100 | FSRx: Frequency synthesiser to Rx frequency | Frequency synthesizer at frequency for reception (Frf-IF) |
| 101 | Receive mode (Rx) | Frequency synthesizer and receiver |

When switching from a mode to another one, the sub-blocks are woken up according to a pre-defined and optimized sequence.

4.2. Startup Times

The startup time of the transmitter or the receiver is dependant upon which mode the transceiver was in at the beginning. For a complete description, Figure 15 below shows a complete startup process, from the lower power mode “Sleep”.

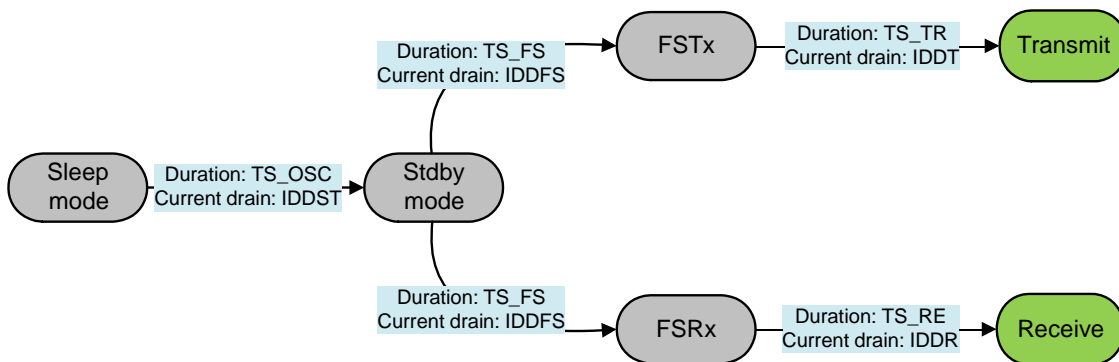


Figure 15. Startup Process

TS_osc is the startup time of the crystal oscillator, and mainly depends on the characteristics of the crystal itself. TS_FS is the startup time of the PLL, and it includes a systematic calibration of the VCO.

Typical values of TS_osc and TS_FS are given in section 2.3.

4.2.1. Transmitter Startup Time

The transmitter startup time, TS_TR , is calculated as follows, in when FSK modulation is selected:

$$TS_TR = 5\mu s + 1.25 \times PaRamp + \frac{1}{2} \times Tbit$$

where $PaRamp$ is the ramp-up time programmed in $RegPaRamp$ and $Tbit$ is the bit time.

In OOK mode, this equation can be simplified to the following:

$$TS_TR = 5\mu s + \frac{1}{2} \times Tbit$$

4.2.2. Tx Start Procedure

As described in the former section, $ModeReady$ and $TxReady$ interrupts warn the uC that the transmitter is ready to transmit data

- In Continuous mode, the preamble bits preceding the payload can be applied on the DIO2/DATA pin immediately after any of these interrupts have fired. The DCLK signal, activated on pin DIO1/DCLK can also be used to start toggling the DATA pin, as described on Figure 29.
- In Packet mode, the SX1231 will automatically modulate the RF signal with preamble bytes as soon as $TxReady$ or $ModeReady$ happen. The actual packet transmission (starting with the number of preambles specified in $PreambleSize$) will start when the $TxStartCondition$ is fulfilled.

4.2.3. Receiver Startup Time

The receiver startup time TS_RE , only depends on the receiver bandwidth effective at the time of startup. When AFC is enabled ($AfcAutoOn=1$), $AfcBw$ should be used instead of $RxBw$ to extract the receiver startup time:

4.3. Top Level Sequencer

Depending on the application, it is desirable to be able to change the mode of the circuit according to a predefined sequence without access to the serial interface. Listen mode and Auto Modes as defined in RF69 are example of such predefined sequences. In order to define different sequences or scenarios a user-programmable state machine, called Top Level Sequencer (Sequencer in short), can automatically control the chip modes.

The Sequencer is activated by setting *SequencerStart* in *RegSeqConfig1* to 1 in Sleep or Standby mode.

It is also possible to force the Idle state of the Sequencer by setting *SequencerStop* to 1 at any time.

4.3.1. Sequencer States

The Sequencer takes control of the chip operation over 7 possible states:

Table 21 Sequencer States

| Sequencer State | Description |
|-----------------------------|---|
| SequencerIdle State | The Sequencer is not activated. Sending a <i>SequencerStart</i> command will launch it. <i>Note: the Idle state of the Sequencer is independant of the actual chip Mode. For example, the Sequencer can be Idle, whilst the chip is in Rx mode.</i> When coming from a <i>LowPower</i> request, the Sequencer will be Idle in Sleep mode. |
| WaitFifo State | The Sequencer waits for <i>FifoThreshold</i> interrupt before entering the Transmit state. |
| LowPower State | The chip is in low-power mode, either Standby or Sleep, as defined in <i>Sequencer Low Power State</i> . The Sequencer waits only for the <i>Timer1</i> interrupt. |
| Transmit State | The transmitter in on. |
| Receive State | The receiver in on. |
| PacketReceived State | The receiver is on and a packet has been received. It is stored in the FIFO. |
| ReceiveRestart State | The receiver is re-started, for example to start a new AGC and/or AFC after a valid packet reception. |

4.3.2. Sequencer Transitions

The transitions between states are listed in the forthcoming table.

Table 22 Sequencer Transition Options

| Variable | Transition |
|---------------------------------------|--|
| SequencerTransitionFromIdle | Control state-machine transition from the Idle state: 00: to LowPower or Idle state on a <i>SequencerStart</i> command, depending on <i>SequencerLowPowerState</i> 01: to Receive state on a <i>SequencerStart</i> command 10: to Transmit state on a <i>SequencerStart</i> command 11: to WaitForFifo on a <i>SequencerStart</i> command |
| SequencerLowPowerState | Defines the low power state of the Sequencer, reached at the end of any action (transmission, reception, etc...) 0: to Idle state 1: to LowPower state |
| SequencerTransitionFromLowPower | Control the Sequencer transition from the LowPower state: 0: to Transmit state on a Timer 1 interrupt 1: to Receive state on a Timer 1 interrupt |
| SequencerTransitionFromTransmit | Control the Sequencer transition from the Transmit state: 0: to LowPower or Idle state on a <i>PacketSent</i> interrupt, depending on <i>SequencerLowPowerState</i> 1: to Receive state on a <i>PacketSent</i> interrupt |
| SequencerTransitionFromReceive | Control the Sequencer transition from the Receive state 000 and 111: unused 001: to PacketReceived state on a <i>PayloadReady</i> interrupt 010: to LowPower or Idle state on a <i>PayloadReady</i> interrupt, depending on <i>SequencerLowPowerState</i> 011: to PacketReceived state on a <i>CrcOk</i> interrupt. If the CRC is disabled the <i>PayloadReady</i> interrupt, firing when enough bytes are received, will drive the Sequencer to the PacketReceived state, too. 100: to Idle state on a <i>Rssi</i> interrupt 101: to Idle state on a <i>SyncAddress</i> interrupt 110: to Idle state on a <i>PreambleDetect</i> interrupt Irrespective of this setting, transition to LowPower or Idle state on a Timer2 interrupt, depending on <i>SequencerLowPowerState</i> |
| SequencerTransitionFromRxTimeout | Control the state-machine transition from the Receive state on a <i>RxTimeout</i> interrupt (and on <i>PayloadReady</i> if <i>SequencerTransitionFromReceive</i> = 011): 00: to ReceiveRestart 01: to Transmit 10: to LowPower or Idle state, depending on <i>SequencerLowPowerState</i> 11: to Idle state |
| SequencerTransitionFromPacketReceived | Control the state-machine transition from the PacketReceived state: 000: to Idle state 001: to Transmit on a <i>FifoEmpty</i> interrupt 010: to LowPower or Idle state on <i>FifoEmpty</i> , depending on <i>SequencerLowPowerState</i> 011: to Receive via FS mode, if frequency was changed 100: to Receive state (no frequency change) |

Two timers (Timer1 and Timer2) are also available in order to define periodic sequences.

Table 23 Sequencer Timer Settings

| Variable | Description |
|-------------------|---|
| Timer1Resolution | Resolution of Timer1 00: disabled 01: 64 us 10: 4.1 ms 11: 262 ms |
| Timer2Resolution | Resolution of Timer2 00: disabled 01: 64 us 10: 4.1 ms 11: 262 ms |
| Timer1Coefficient | Multiplying coefficient for Timer1 |
| Timer2Coefficient | Multiplying coefficient for Timer2 |

The Sequencer is very flexible, and takes many duties off the microcontroller. Possible scenarii include Listen Mode, Listen Before Talk, Automatic Acknowledgment, Beacon transmitter...

The following figures show the possible transitions from each Sequencer State. The initial state is highlighted in green, and final states are in grey; transition conditions, represented by an arrow, are described in a blue text box.

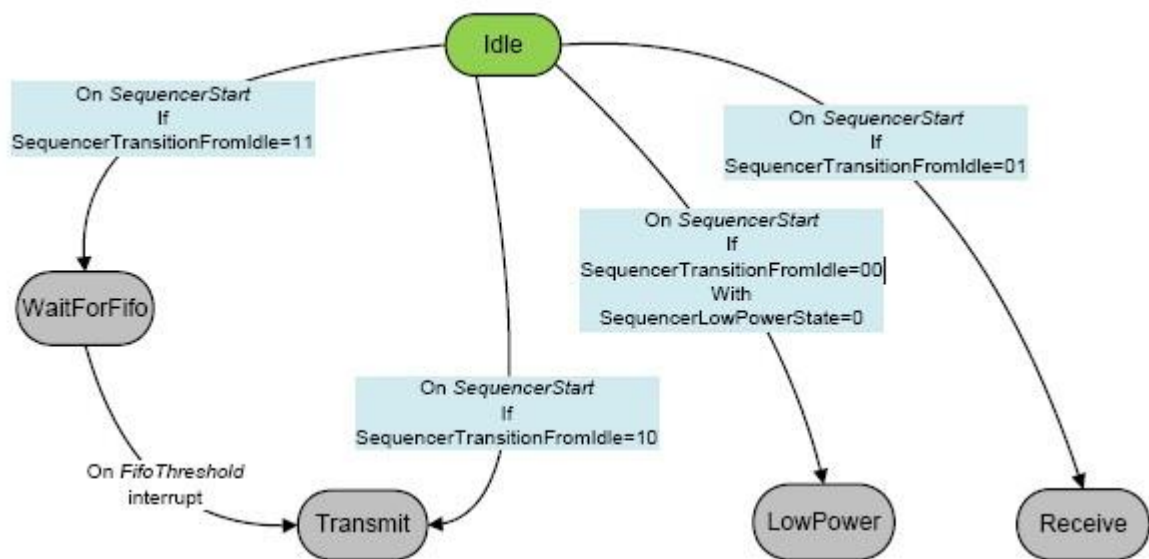


Figure 16. Sequencer Transitions From Idle State

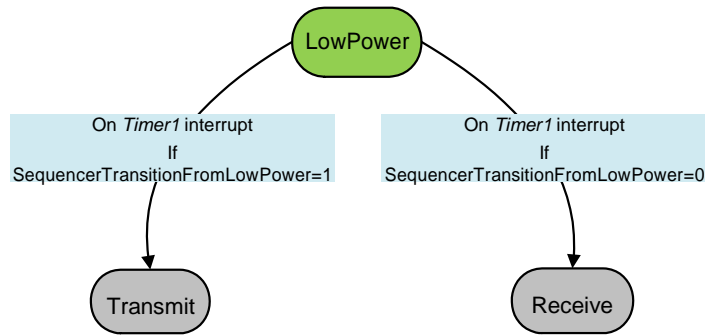


Figure 17. Sequencer Transitions From LowPower State

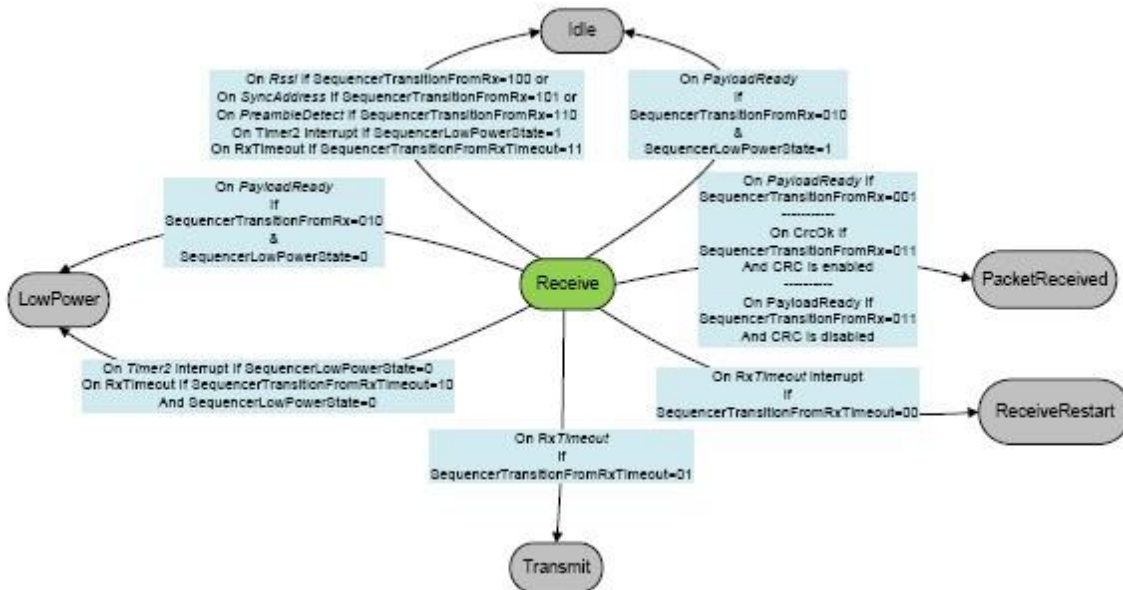


Figure 18. Sequencer Transitions From Receive State

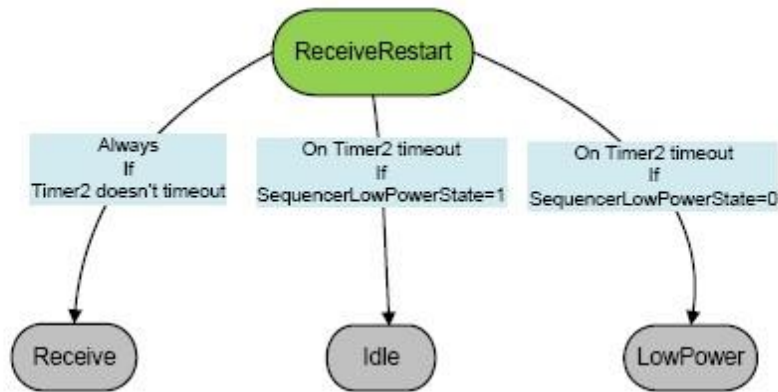


Figure 19. Sequencer Transitions From ReceiveRestart State

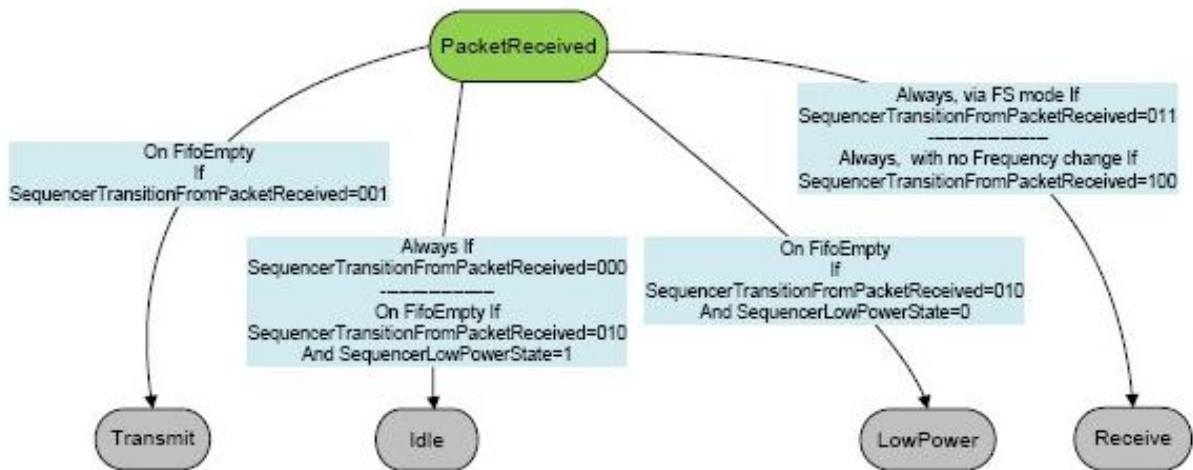


Figure 20. Sequencer Transitions From PacketReceived State

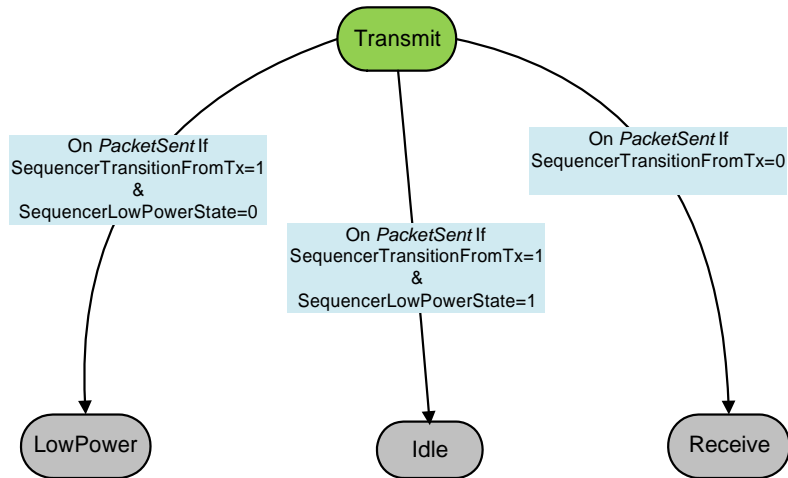


Figure 21. Sequencer Transitions From Transmit State

4.3.3. Example Sequence: Listen Mode

In this mode, the circuit spends most of the time in a Sleep mode, during which only the RC oscillator is on. Periodically the receiver wakes up and looks for incoming signal. If a wanted signal is detected, the receiver is kept on and data are analyzed. Otherwise, if there was no wanted signal for a defined period of time, the receiver is switched off until the next Rx period.

The simplified timing diagram of this procedure is given in Figure 22.

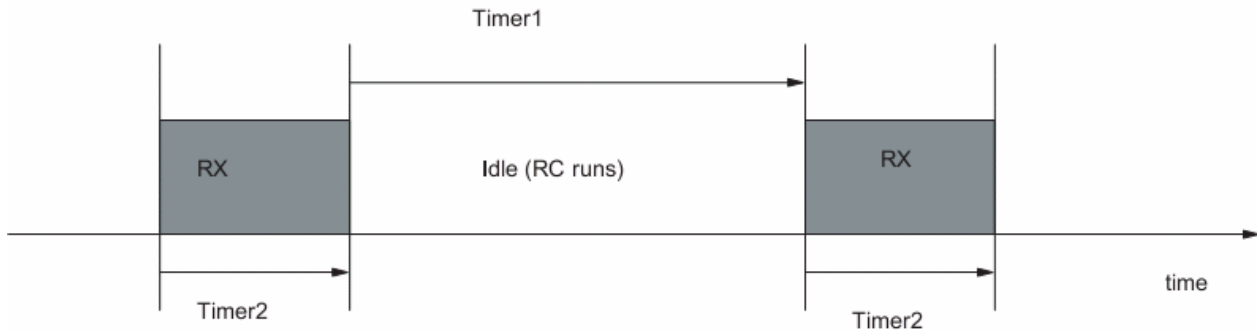


Figure 22. Listen mode Sequence (no wanted signal)

The durations of the Idling and Receive periods can be programmed using *Timer1* and *Timer2* respectively.

The criteria taken for detecting the presence of a wanted signal and for deciding to maintain the receiver on are defined in the variable *SequencerTransitionFromReceive*.

One possible scenario, is when the circuit leaves the RF polling sequence and stays in Receive mode as long as the user doesn't switch modes.

The packet acceptance criteria is, for example, detection of a valid Preamble thanks to the *PreambleDetect* interrupt.

This example is achieved by programming the Sequencer as follows:

Table 24 Listen Mode Example Scenario

| Variable | Effect |
|----------------------------------|--|
| SequencerLowPowerMode | 1: Sleep mode (with RC oscillator running) |
| SequencerTransitionFromIdle | 00: to LowPower state on a <i>SequencerStart</i> command |
| SequencerLowPowerState | 0: to LowPower state |
| SequencerTransitionFromLowPower | 0: to Receive State if a <i>Timer1</i> interrupt occurs |
| SequencerTransitionFromReceive | 110: to Idle on a <i>PreambleDetect</i> interrupt: the receiver stay on but the Sequencer is Idle. Implicit: to LowPower state on a <i>Timer2</i> interrupt |
| SequencerTransitionFromRxTimeout | 00: to Receive state after a restart |

5. Data Processing

5.1. Overview

5.1.1. Block Diagram

Figure below illustrates the RFM66W data processing circuit. Its role is to interface the data to/from the modulator/demodulator and the uC access points (SPI and DIO pins). It also controls all the configuration registers.

The circuit contains several control blocks which are described in the following paragraphs.

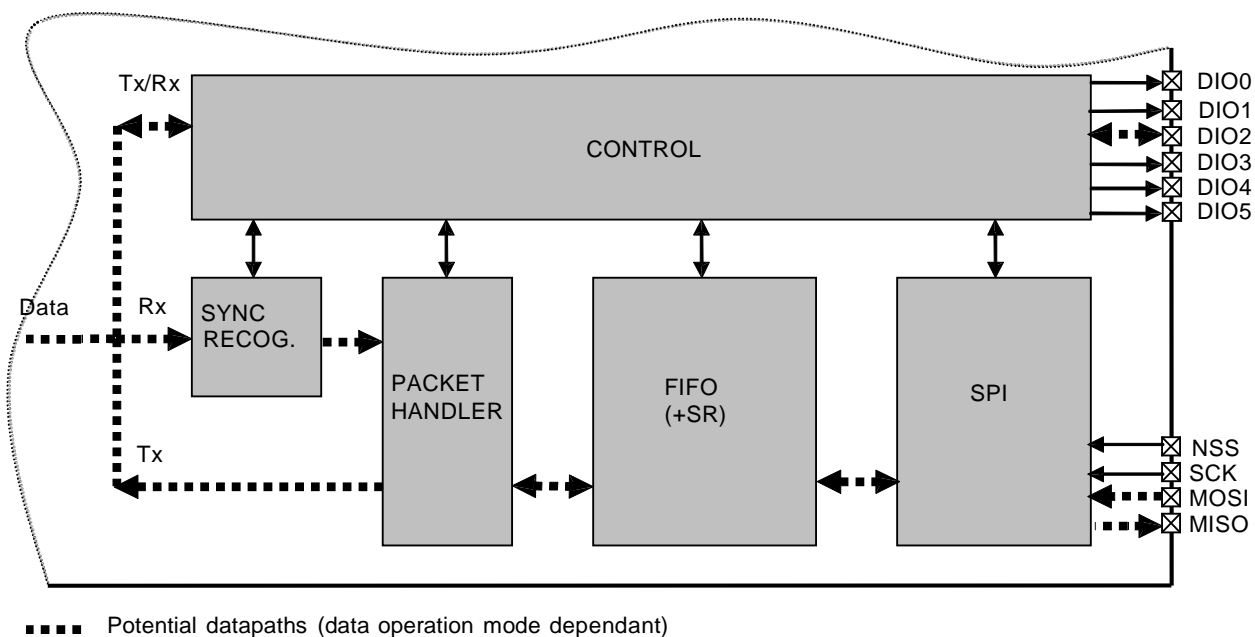


Figure 23. RFM66W Data Processing Conceptual View

The RFM66W implements several data operation modes, each with their own data path through the data processing section. Depending on the data operation mode selected, some control blocks are active whilst others remain disabled.

5.1.2. Data Operation Modes

The RFM66W has two different data operation modes selectable by the user:

- **Continuous mode:** each bit transmitted or received is accessed in real time at the DIO2/DATA pin. This mode may be used if adequate external signal processing is available.
- **Packet mode (recommended):** user only provides/retrieves payload bytes to/from the FIFO. The packet is automatically built with preamble, Sync word, and optional CRC and DC-free encoding schemes. The reverse operation is performed in reception. The uC processing overhead is hence significantly reduced compared to Continuous mode. Depending on the optional features activated (CRC, etc) the maximum payload length is limited to 255, 2047 bytes or unlimited.

Each of these data operation modes is fully described in the following sections.

5.2. Control Block Description

5.2.1. SPI Interface

The SPI interface gives access to the configuration register via a synchronous full-duplex protocol corresponding to CPOL = 0 and CPHA = 0 in Motorola/Freescale nomenclature. Only the slave side is implemented.

Three access modes to the registers are provided:

- **SINGLE access:** an address byte followed by a data byte is sent for a write access whereas an address byte is sent and a read byte is received for the read access. The NSS pin goes low at the begin of the frame and goes high after the data byte.
- **BURST access:** the address byte is followed by several data bytes. The address is automatically incremented internally between each data byte. This mode is available for both read and write accesses. The NSS pin goes low at the beginning of the frame and stay low between each byte. It goes high only after the last byte transfer.
- **FIFO access:** if the address byte corresponds to the address of the FIFO, then succeeding data byte will address the FIFO. The address is not automatically incremented but is memorized and does not need to be sent between each data byte. The NSS pin goes low at the beginning of the frame and stay low between each byte. It goes high only after the last byte transfer.

Figure below shows a typical SPI single access to a register.

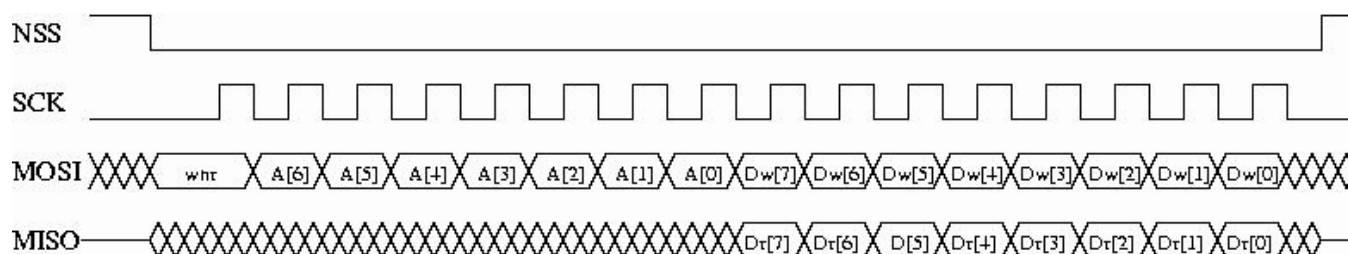


Figure 24. SPI Timing Diagram (single access)

MOSI is generated by the master on the falling edge of SCK and is sampled by the slave (i.e. this SPI interface) on the rising edge of SCK. MISO is generated by the slave on the falling edge of SCK.

A transfer always starts by the NSS pin going low. MISO is high impedance when NSS is high.

The first byte is the address byte. It is made of:

- **wnr bit**, which is 1 for write access and 0 for read access
- **7 bits of address**, MSB first

The second byte is a data byte, either sent on MOSI by the master in case of a write access, or received by the master on MISO in case of read access. The data byte is transmitted MSB first.

Proceeding bytes may be sent on MOSI (for write access) or received on MISO (for read access) without rising NSS and re-sending the address. In FIFO mode, if the address was the FIFO address then the bytes will be written / read at the FIFO address. In Burst mode, if the address was not the FIFO address, then it is automatically incremented at each new byte received.

The frame ends when NSS goes high. The next frame must start with an address byte. The SINGLE access mode is actually a special case of FIFO / BURST mode with only 1 data byte transferred.

During the write access, the byte transferred from the slave to the master on the MISO line is the value of the written register before the write operation.

5.2.2. FIFO

5.2.2.1. Overview and Shift Register (SR)

In packet mode of operation, both data to be transmitted and that has been received are stored in a configurable FIFO (First In First Out) device. It is accessed via the SPI interface and provides several interrupts for transfer management.

The FIFO is 1 byte wide hence it only performs byte (parallel) operations, whereas the demodulator functions serially. A shift register is therefore employed to interface the two devices. In transmit mode it takes bytes from the FIFO and outputs them serially (MSB first) at the programmed bit rate to the modulator. Similarly, in Rx the shift register gets bit by bit data from the demodulator and writes them byte by byte to the FIFO. This is illustrated in figure below.

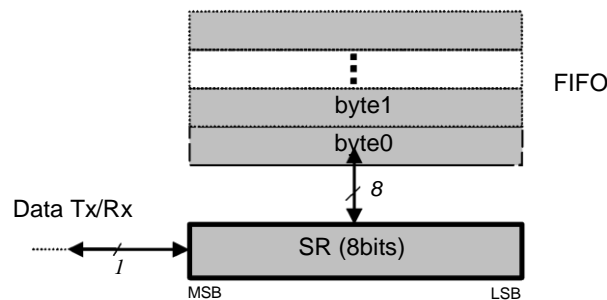


Figure 25. FIFO and Shift Register (SR)

Note When switching to Sleep mode, the FIFO can only be used once the ModeReady flag is set (quasi immediate from all modes except from Tx)

5.2.2.2. Size

The FIFO size is fixed to 64 bytes.

5.2.2.3. Interrupt Sources and Flags

- **FifoEmpty:** *FifoEmpty* interrupt source is high when byte 0, i.e. whole FIFO, is empty. Otherwise it is low. Note that when retrieving data from the FIFO, *FifoEmpty* is updated on NSS falling edge, i.e. when *FifoEmpty* is updated to low state the currently started read operation must be completed. In other words, *FifoEmpty* state must be checked after each read operation for a decision on the next one (*FifoEmpty* = 0: more byte(s) to read; *FifoEmpty* = 1: no more byte to read).
- **FifoFull:** *FifoFull* interrupt source is high when the last FIFO byte, i.e. the whole FIFO, is full. Otherwise it is low.
- **FifoOverrunFlag:** *FifoOverrunFlag* is set when a new byte is written by the user (in Tx or Standby modes) or the SR (in Rx mode) while the FIFO is already full. Data is lost and the flag should be cleared by writing a 1, note that the FIFO will also be cleared.
- **PacketSent:** *PacketSent* interrupt source goes high when the SR's last bit has been sent.
- **FifoLevel:** Threshold can be programmed by *FifoThreshold* in *RegFifoThresh*. Its behavior is illustrated in figure below.

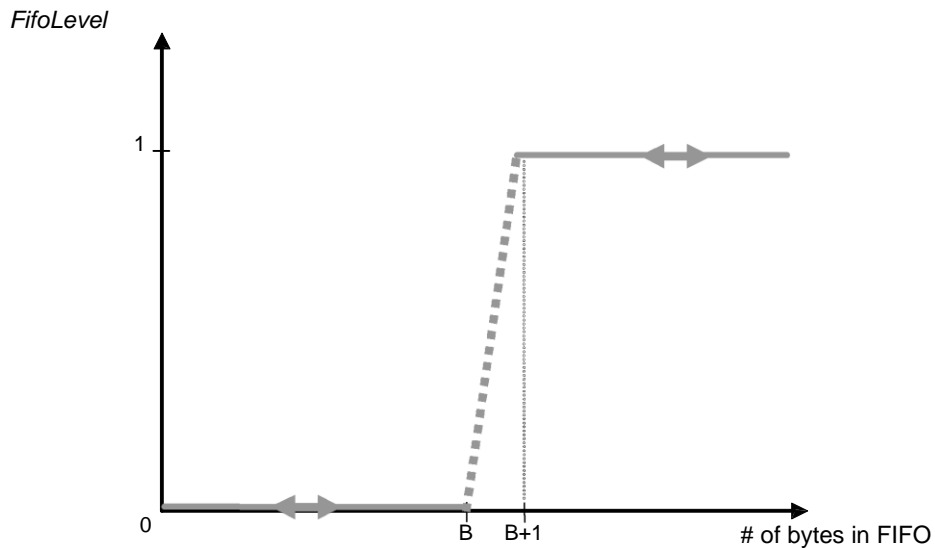


Figure 26. *FifoLevel* IRQ Source Behavior

- Note*
- *FifoLevel* interrupt is updated only after a read or write operation on the FIFO. Thus the interrupt cannot be dynamically updated by only changing the *FifoThreshold* parameter
 - *FifoLevel* interrupt is valid as long as *FifoFull* does not occur. An empty FIFO will restore its normal operation

5.2.2.4. FIFO Clearing

Table below summarizes the status of the FIFO when switching between different modes

Table 25 *Status of FIFO when Switching Between Different Modes of the Chip*

| From | To | FIFO status | Comments |
|-------------|-------------|-------------|--|
| Stdby | Sleep | Not cleared | |
| Sleep | Stdby | Not cleared | |
| Stdby/Sleep | Tx | Not cleared | To allow the user to write the FIFO in Stdby/Sleep before Tx |
| Stdby/Sleep | Rx | Cleared | |
| Rx | Tx | Cleared | |
| Rx | Stdby/Sleep | Not cleared | To allow the user to read FIFO in Stdby/Sleep mode after Rx |
| Tx | Any | Cleared | |

5.2.3. Sync Word Recognition

5.2.3.1. Overview

Sync word recognition (also called Pattern recognition) is activated by setting *SyncOn* in *RegSyncConfig*. The bit synchronizer must also be activated in Continuous mode (automatically done in Packet mode).

The block behaves like a shift register; it continuously compares the incoming data with its internally programmed Sync word and sets *SyncAddressMatch* when a match is detected. This is illustrated in Figure 27 below.

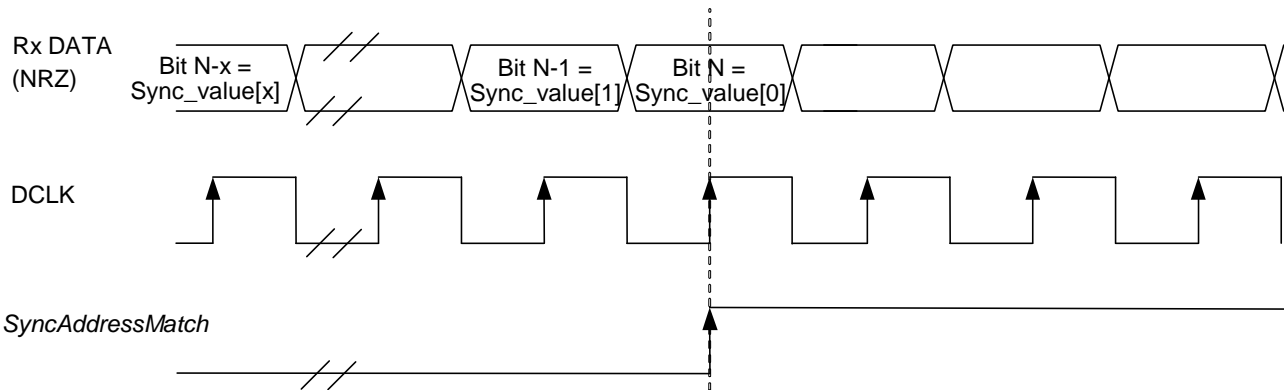


Figure 27. Sync Word Recognition

During the comparison of the demodulated data, the first bit received is compared with bit 7 (MSB) of *RegSyncValue1* and the last bit received is compared with bit 0 (LSB) of the last byte whose address is determined by the length of the Sync word.

When the programmed Sync word is detected the user can assume that this incoming packet is for the node and can be processed accordingly.

SyncAddressMatch is cleared when leaving Rx or FIFO is emptied.

5.2.3.2. Configuration

- Size: Sync word size can be set from 1 to 8 bytes (i.e. 8 to 64 bits) via *SyncSize* in *RegSyncConfig*. In Packet mode this field is also used for Sync word generation in Tx mode.
- Value: The Sync word value is configured in *SyncValue(63:0)*. In Packet mode this field is also used for Sync word generation in Tx mode.

Note *SyncValue* choices containing 0x00 bytes are not allowed

5.2.4. Packet Handler

The packet handler is the block used in Packet mode. Its functionality is fully described in section 5.5.

5.2.5. Control

The control block configures and controls the full chip's behavior according to the settings programmed in the configuration registers.

5.3. Digital IO Pins Mapping

Six general purpose IO pins are available on the RFM66W, and their configuration in Continuous or Packet mode is controlled through *RegDioMapping1* and *RegDioMapping2*.

Table 26 DIO Mapping, Continuous Mode

| Mode | Diox Mapping | DIO5 | DIO4 | DIO3 | DIO2 | DIO1 | DIO0 |
|--------------------|--------------|-------------------------|-----------------------|-------------------------|------|-------------------------|-------------------------|
| Sleep | 00 | - | - | - | - | - | - |
| | 01 | - | - | - | - | - | - |
| | 10 | - | - | - | - | - | - |
| | 11 | - | - | - | - | - | - |
| Stdby | 00 | ClkOut | TempChange/ LowBat | - | - | - | - |
| | 01 | - | - | - | - | - | - |
| | 10 | - | - | - | - | - | - |
| | 11 | ModeReady | ModeReady | TempChange/ LowBat | - | - | - |
| FSRx or FSTx | 00 | ClkOut | TempChange/ LowBat | - | - | - | - |
| | 01 | PIILock | PIILock | - | - | - | - |
| | 10 | - | - | AutoMode | - | - | - |
| | 11 | ModeReady | ModeReady | TempChange/ LowBat | - | - | - |
| Rx | 00 | ClkOut | TempChange/ LowBat | Timeout | Data | Dclk | SyncAddress |
| | 01 | PIILock | PIILock | Rssi/ PreambleDetect | Data | Rssi/ PreambleDetect | Rssi/ PreambleDetect |
| | 10 | Rssi/ PreambleDetect | TimeOut | - | Data | - | RxReady |
| | 11 | ModeReady | ModeReady | TempChange/ LowBat | Data | - | - |
| Tx | 00 | ClkOut | TempChange/ LowBat | - | Data | Dclk | TxReady |
| | 01 | PIILock | PIILock | - | Data | - | - |
| | 10 | - | - | - | Data | - | - |
| | 11 | ModeReady | ModeReady | TempChange/ LowBat | Data | 0 | 0 |

Table 27 DIO Mapping, Packet Mode

| Mode | Diox Mapping | DIO5 | DIO4 | DIO3 | DIO2 | DIO1 | DIO0 |
|--------------------|--------------|-----------|-------------------------|-----------|-------------|-----------|-----------------------|
| Sleep | 00 | - | - | FifoEmpty | FifoFull | FifoLevel | - |
| | 01 | - | - | - | - | FifoEmpty | - |
| | 10 | - | - | FifoEmpty | FifoFull | FifoFull | - |
| | 11 | - | - | FifoEmpty | FifoFull | - | TempChange/ LowBat |
| Stdby | 00 | ClkOut | TempChange/ LowBat | FifoEmpty | FifoFull | FifoLevel | - |
| | 01 | - | - | - | - | FifoEmpty | - |
| | 10 | - | - | FifoEmpty | FifoFull | FifoFull | - |
| | 11 | ModeReady | - | FifoEmpty | FifoFull | - | TempChange/ LowBat |
| FSRx or FSTx | 00 | ClkOut | TempChange/ LowBat | FifoEmpty | FifoFull | FifoLevel | - |
| | 01 | PIILock | PIILock | - | - | FifoEmpty | - |
| | 10 | - | - | FifoEmpty | FifoFull | FifoFull | - |
| | 11 | ModeReady | - | FifoEmpty | FifoFull | - | TempChange/ LowBat |
| Rx | 00 | ClkOut | TempChange/ LowBat | FifoEmpty | FifoFull | FifoLevel | PayloadReady |
| | 01 | PIILock | PIILock | - | RxReady | FifoEmpty | CrcOk |
| | 10 | Data | Timeout | FifoEmpty | Timeout | FifoFull | - |
| | 11 | ModeReady | Rssi/ PreambleDetect | FifoEmpty | SyncAddress | - | TempChange/ LowBat |
| Tx | 00 | ClkOut | TempChange/ LowBat | FifoEmpty | FifoFull | FifoLevel | PacketSent |
| | 01 | PIILock | PIILock | TxReady | - | FifoEmpty | - |
| | 10 | Data | - | FifoEmpty | FifoFull | FifoFull | - |
| | 11 | ModeReady | - | FifoEmpty | FifoFull | - | TempChange/ LowBat |

Note Received Data is shown on the Data signal when RxReady arises

5.4. Continuous Mode

5.4.1. General Description

As illustrated in Figure 28, in Continuous mode the NRZ data to (from) the (de)modulator is directly accessed by the uC on the bidirectional DIO2/DATA pin. The FIFO and packet handler are thus inactive.

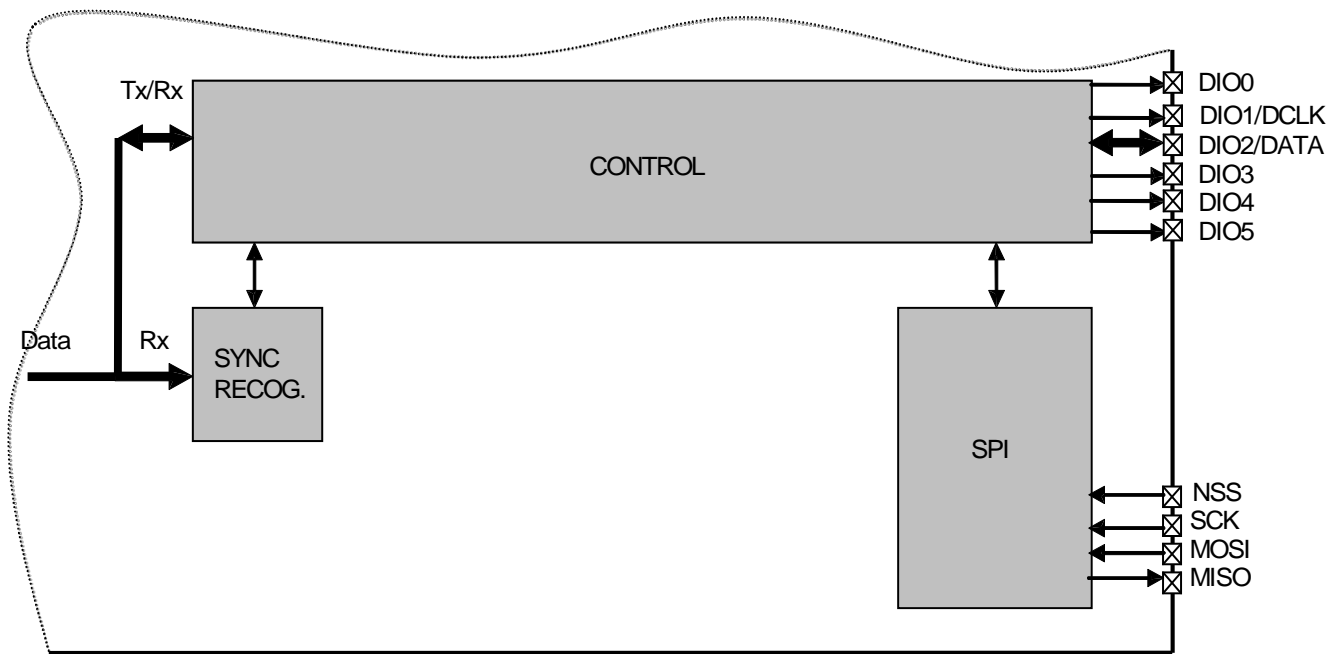


Figure 28. Continuous Mode Conceptual View

5.4.2. Tx Processing

In Tx mode, a synchronous data clock for an external uC is provided on DIO1/DCLK pin. Clock timing with respect to the data is illustrated in Figure 29. DATA is internally sampled on the rising edge of DCLK so the uC can change logic state anytime outside the grayed out setup/hold zone.

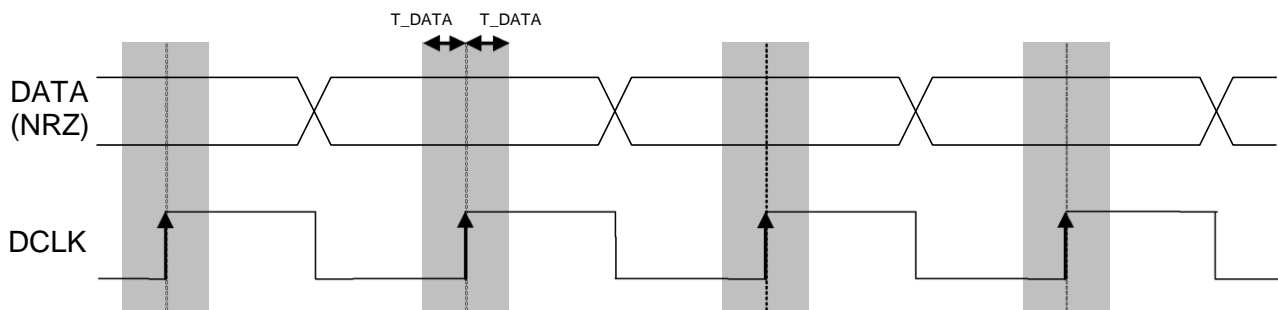


Figure 29. Tx Processing in Continuous Mode

Note the use of DCLK is required when the modulation shaping is enabled (see section 3.4.5).

5.4.3. Rx Processing

If the bit synchronizer is disabled, the raw demodulator output is made directly available on DATA pin and no DCLK signal is provided.

Conversely, if the bit synchronizer is enabled, synchronous cleaned data and clock are made available respectively on DIO2/DATA and DIO1/DCLK pins. DATA is sampled on the rising edge of DCLK and updated on the falling edge as illustrated below.

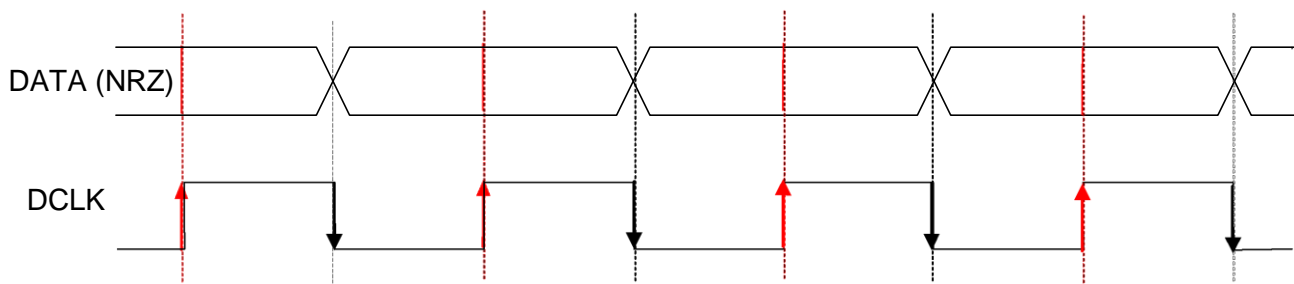


Figure 30. Rx Processing in Continuous Mode

Note in Continuous mode it is always recommended to enable the bit synchronizer to clean the DATA signal even if the DCLK signal is not used by the uC (bit synchronizer is automatically enabled in Packet mode).

5.5. Packet Mode

5.5.1. General Description

In Packet mode the NRZ data to (from) the (de)modulator is not directly accessed by the uC but stored in the FIFO and accessed via the SPI interface.

In addition, the RFM66W packet handler performs several packet oriented tasks such as Preamble and Sync word generation, CRC calculation/check, whitening/dewhitening of data, Manchester encoding/decoding, address filtering, etc. This simplifies software and reduces uC overhead by performing these repetitive tasks within the RF chip itself.

Another important feature is ability to fill and empty the FIFO in Sleep/Stdby mode, ensuring optimum power consumption and adding more flexibility for the software.

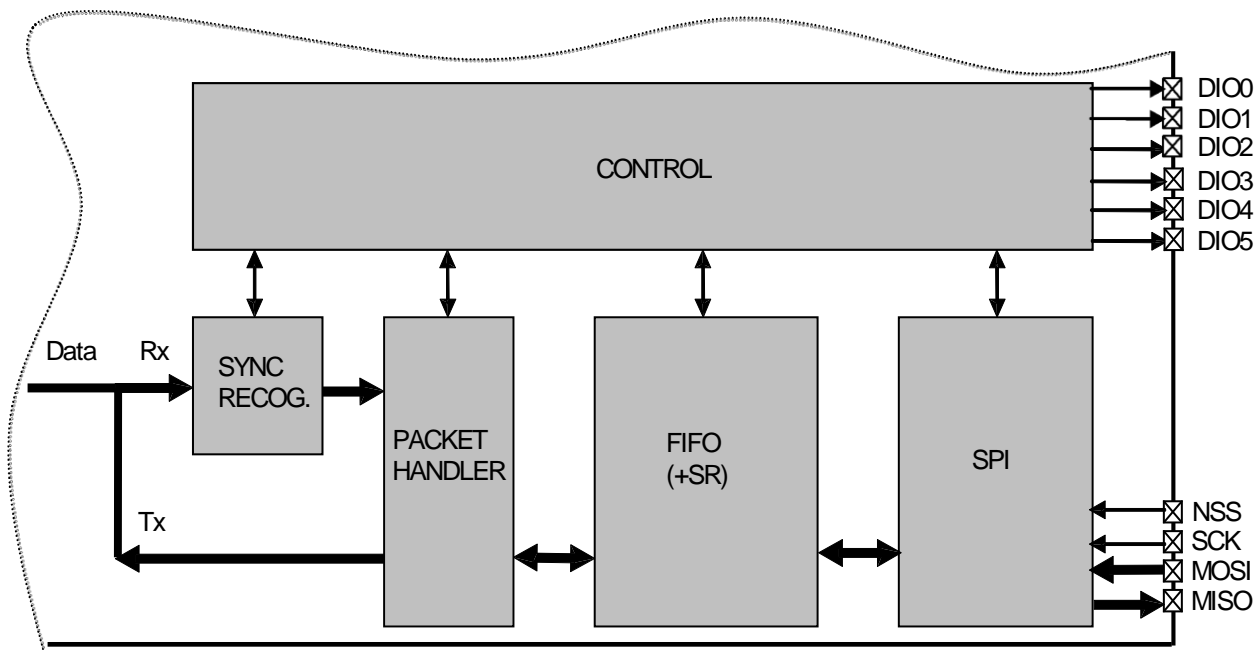


Figure 31. Packet Mode Conceptual View

Note The Bit Synchronizer is automatically enabled in Packet mode.

5.5.2. Packet Format

5.5.2.1. Fixed Length Packet Format

Fixed length packet format is selected when bit *PacketFormat* is set to 0 and *PayloadLength* is set to any value greater than 0.

In applications where the packet length is fixed in advance, this mode of operation may be of interest to minimize RF overhead (no length byte field is required). All nodes, whether Tx only, Rx only, or Tx/Rx should be programmed with the same packet length value.

The length of the payload is limited to 2047 bytes.

The length programmed in *PayloadLength* relates only to the payload which includes the message and the optional address byte. In this mode, the payload must contain at least one byte, i.e. address or message byte.

An illustration of a fixed length packet is shown below. It contains the following fields:

- Preamble (1010...)
- Sync word (Network ID)
- Optional Address byte (Node ID)
- Message data
- Optional 2-bytes CRC checksum

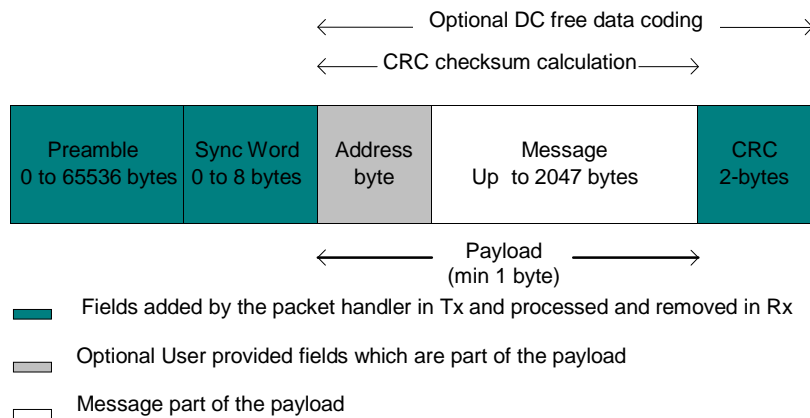


Figure 32. Fixed Length Packet Format

5.5.2.2. Variable Length Packet Format

Variable length packet format is selected when bit *PacketFormat* is set to 1.

This mode is useful in applications where the length of the packet is not known in advance and can vary over time. It is then necessary for the transmitter to send the length information together with each packet in order for the receiver to operate properly.

In this mode the length of the payload, indicated by the length byte, is given by the first byte of the FIFO and is limited to 255 bytes. Note that the length byte itself is not included in its calculation. In this mode, the payload must contain at least 2 bytes, i.e. length + address or message byte.

An illustration of a variable length packet is shown below. It contains the following fields:

- Preamble (1010...)
- Sync word (Network ID)
- Length byte
- Optional Address byte (Node ID)
- Message data

■ Optional 2-bytes CRC checksum

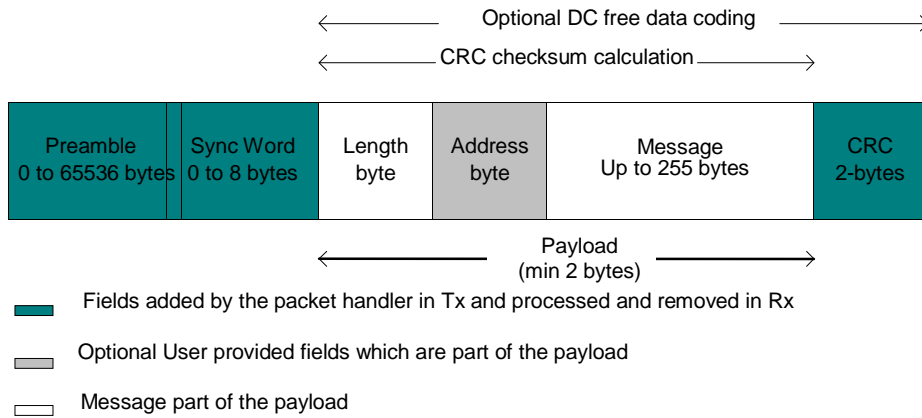


Figure 33. Variable Length Packet Format

5.5.2.3. Unlimited Length Packet Format

Unlimited length packet format is selected when bit *PacketFormat* is set to 0 and *PayloadLength* is set to 0.

The user can then transmit and receive packet of arbitrary length and *PayloadLength* register is not used in Tx/Rx modes for counting the length of the bytes transmitted/received.

In Tx the data is transmitted depending on the *TxStartCondition* bit. On the Rx side the data processing features like Address filtering, Manchester encoding and data whitening are not available if the sync pattern length is set to zero (*SyncOn* = 0). The filling of the FIFO in this case can be controlled by the bit *FifoFillCondition*. The CRC detection in Rx is also not supported in this mode of the packet handler, however CRC generation in Tx is operational. The interrupts like *CrcOk* & *PayloadReady* are not available either.

An unlimited length packet shown in is made up of the following fields:

- Preamble (1010...).
- Sync word (Network ID).
- Optional Address byte (Node ID).
- Message data
- Optional 2-bytes CRC checksum (Tx only)

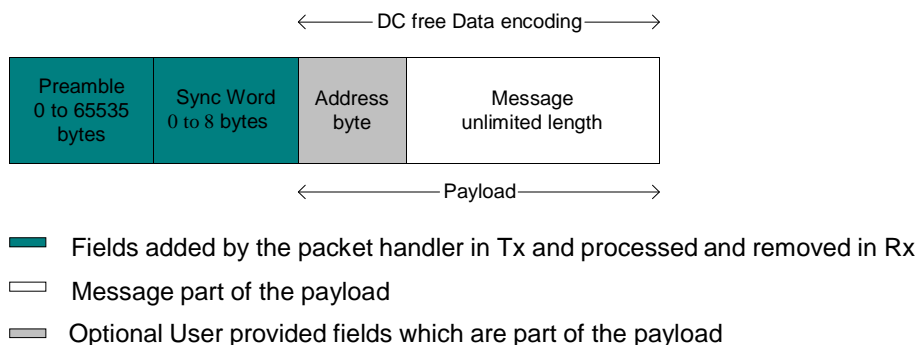


Figure 34. Unlimited Length Packet Format

5.5.3. Tx Processing

In Tx mode the packet handler dynamically builds the packet by performing the following operations on the payload available in the FIFO:

- Add a programmable number of preamble bytes
- Add a programmable Sync word
- Optionally calculating CRC over complete payload field (optional length byte + optional address byte + message) and appending the 2 bytes checksum.
- Optional DC-free encoding of the data (Manchester or whitening)

Only the payload (including optional address and length fields) is required to be provided by the user in the FIFO.

The transmission of packet data is initiated by the Packet Handler only if the chip is in Tx mode and the transmission condition defined by *TxStartCondition* is fulfilled. If transmission condition is not fulfilled then the packet handler transmits a preamble sequence until the condition is met. This happens only if the preamble length $\neq 0$, otherwise it transmits a zero or one until the condition is met to transmit the packet data.

The transmission condition itself is defined as:

- if *TxStartCondition* = 1, the packet handler waits until the first byte is written into the FIFO, then it starts sending the preamble followed by the sync word and user payload
- If *TxStartCondition* = 0, the packet handler waits until the number of bytes written in the FIFO is equal to the number defined in *RegFifoThresh* + 1
- If the condition for transmission was already fulfilled i.e. the FIFO was filled in Sleep/Stdby then the transmission of packet starts immediately on enabling Tx

5.5.4. Rx Processing

In Rx mode the packet handler extracts the user payload to the FIFO by performing the following operations:

- Receiving the preamble and stripping it off
- Detecting the Sync word and stripping it off
- Optional DC-free decoding of data
- Optionally checking the address byte
- Optionally checking CRC and reflecting the result on *CrcOk*.

Only the payload (including optional address and length fields) is made available in the FIFO.

When the Rx mode is enabled the demodulator receives the preamble followed by the detection of sync word. If fixed length packet format is enabled then the number of bytes received as the payload is given by the *PayloadLength* parameter.

In variable length mode the first byte received after the sync word is interpreted as the length of the received packet. The internal length counter is initialized to this received length. The *PayloadLength* register is set to a value which is greater than the maximum expected length of the received packet. If the received length is greater than the maximum length stored in *PayloadLength* register the packet is discarded otherwise the complete packet is received.

If the address check is enabled then the second byte received in case of variable length and first byte in case of fixed length is the address byte. If the address matches to the one in the *NodeAddress* field, reception of the data continues otherwise it's stopped. The CRC check is performed if *CrcOn* = 1 and the result is available in *CrcOk* indicating that the CRC was successful. An interrupt (*PayloadReady*) is also generated on DIO0 as soon as the payload is available in the FIFO. The payload available in the FIFO can also be read in Sleep/Standby mode.

If the CRC fails the *PayloadReady* interrupt is not generated and the FIFO is cleared. This function can be overridden by setting *CrcAutoClearOff* = 1, forcing the availability of *PayloadReady* interrupt and the payload in the FIFO even if the CRC fails.

5.5.5. Handling Large Packets

When *PayloadLength* exceeds FIFO size (64 bytes) whether in fixed, variable or unlimited length packet format, in addition to *PacketSent* in Tx and *PayloadReady* or *CrcOk* in Rx, the FIFO interrupts/flags can be used as described below:

■ For Tx:

FIFO can be prefilled in Sleep/Standby but must be refilled "on-the-fly" during Tx with the rest of the payload.

- 1) Prefill FIFO (in Sleep/Standby first or directly in Tx mode) until *FifoThreshold* or *FifoFull* is set
- 2) In Tx, wait for *FifoThreshold* or *FifoEmpty* to be set (i.e. FIFO is nearly empty)
- 3) Write bytes into the FIFO until *FifoThreshold* or *FifoFull* is set.
- 4) Continue to step 2 until the entire message has been written to the FIFO (*PacketSent* will fire when the last bit of the packet has been sent).

■ For Rx:

FIFO must be unfilled "on-the-fly" during Rx to prevent FIFO overrun.

- 1) Start reading bytes from the FIFO when *FifoEmpty* is cleared or *FifoThreshold* becomes set.
- 2) Suspend reading from the FIFO if *FifoEmpty* fires before all bytes of the message have been read
- 3) Continue to step 1 until *PayloadReady* or *CrcOk* fires
- 4) Read all remaining bytes from the FIFO either in Rx or Sleep/Standby mode

5.5.6. Packet Filtering

The RFM66W packet handler offers several mechanisms for packet filtering, ensuring that only useful packets are made available to the uC, reducing significantly system power consumption and software complexity.

5.5.6.1. Sync Word Based

Sync word filtering/recognition is used for identifying the start of the payload and also for network identification. As previously described, the Sync word recognition block is configured (size, value) in *RegSyncConfig* and *RegSyncValue(i)* registers. This information is used, both for appending Sync word in Tx, and filtering packets in Rx.

Every received packet which does not start with this locally configured Sync word is automatically discarded and no interrupt is generated.

When the Sync word is detected, payload reception automatically starts and *SyncAddressMatch* is asserted.

Note Sync Word values containing 0x00 byte(s) are forbidden

5.5.6.2. Address Based

Address filtering can be enabled via the *AddressFiltering* bits. It adds another level of filtering, above Sync word (i.e. Sync must match first), typically useful in a multi-node networks where a network ID is shared between all nodes (Sync word) and each node has its own ID (address).

Two address based filtering options are available:

- *AddressFiltering* = 01: Received address field is compared with internal register *NodeAddress*. If they match then the packet is accepted and processed, otherwise it is discarded.
- *AddressFiltering* = 10: Received address field is compared with internal registers *NodeAddress* and *BroadcastAddress*. If either is a match, the received packet is accepted and processed, otherwise it is discarded. This additional check with a constant is useful for implementing broadcast in a multi-node networks

Please note that the received address byte, as part of the payload, is not stripped off the packet and is made available in the FIFO. In addition, *NodeAddress* and *AddressFiltering* only apply to Rx. On Tx side, if address filtering is expected, the address byte should simply be put into the FIFO like any other byte of the payload.

As address filtering requires a Sync word match, both features share the same interrupt flag *SyncAddressMatch*.

5.5.6.3. Length Based

In variable length Packet mode, *PayloadLength* must be programmed with the maximum payload length permitted. If received length byte is smaller than this maximum then the packet is accepted and processed, otherwise it is discarded.

Please note that the received length byte, as part of the payload, is not stripped off the packet and is made available in the FIFO.

To disable this function the user should set the value of the *PayloadLength* to 2047.

5.5.6.4. CRC Based

The CRC check is enabled by setting bit *CrcOn* in *RegPacketConfig1*. It is used for checking the integrity of the message.

- On Tx side a two byte CRC checksum is calculated on the payload part of the packet and appended to the end of the message
- On Rx side the checksum is calculated on the received payload and compared with the two checksum bytes received. The result of the comparison is stored in bit *CrcOk*.

By default, if the CRC check fails then the FIFO is automatically cleared and no interrupt is generated. This filtering function can be disabled via *CrcAutoClearOff* bit and in this case, even if CRC fails, the FIFO is not cleared and only *PayloadReady* interrupt goes high. Please note that in both cases, the two CRC checksum bytes are stripped off by the packet handler and only the payload is made available in the FIFO.

Two CRC implementations are selected with bit *CrcWhiteningType*.

Table 28 CRC Description

| Crc Type | CrcWhiteningType | Polynomial | Seed Value | Complemented |
|----------|------------------|-----------------------------|------------|--------------|
| CCITT | 0 (default) | $X^{16} + X^{12} + X^5 + 1$ | 0x1D0F | Yes |
| IBM | 1 | $X^{16} + X^{15} + X^2 + 1$ | 0xFFFF | No |

A C code implementation of each CRC type is proposed in Application Section 7.

5.5.7. DC-Free Data Mechanisms

The payload to be transmitted may contain long sequences of 1's and 0's, which introduces a DC bias in the transmitted signal. The radio signal thus produced has a non uniform power distribution over the occupied channel bandwidth. It also introduces data dependencies in the normal operation of the demodulator. Thus it is useful if the transmitted data is random and DC free.

For such purposes, two techniques are made available in the packet handler: Manchester encoding and data whitening.

Note Only one of the two methods can be enabled at a time.

5.5.7.1. Manchester Encoding

Manchester encoding/decoding is enabled if *DcFree = 01* and can only be used in Packet mode.

The NRZ data is converted to Manchester code by coding '1' as "10" and '0' as "01".

In this case, the maximum chip rate is the maximum bit rate given in the specifications section and the actual bit rate is half the chip rate.

Manchester encoding and decoding is only applied to the payload and CRC checksum while preamble and Sync word are kept NRZ. However, the chip rate from preamble to CRC is the same and defined by *BitRate* in *RegBitRate* (Chip Rate = Bit Rate NRZ = 2 x Bit Rate Manchester).

Manchester encoding/decoding is thus made transparent for the user, who still provides/retrieves NRZ data to/from the FIFO.

| | | | | | | | | | | | | | | | | | | | |
|---------------------------------|-----|------------------------------|---|---|---|---|---|---|--|---|---|---|---|---|---|---|---|---|-----|
| | | 1/BR ← 1 → 1 0 1 0 0 ...Sync | | | | | | | 1/BR ← 0 → 1 0 1 1 0 1 0 ...Payload... | | | | | | | | | | |
| RF chips @ BR | ... | 1 | 1 | 1 | 0 | 1 | 0 | 0 | 1 | 0 | 0 | 1 | 0 | 1 | 1 | 0 | 1 | 0 | ... |
| User/NRZ bits Manchester OFF | ... | 1 | 1 | 1 | 0 | 1 | 0 | 0 | 1 | 0 | 0 | 1 | 0 | 1 | 1 | 0 | 1 | 0 | ... |
| User/NRZ bits Manchester ON | ... | 1 | 1 | 1 | 0 | 1 | 0 | 0 | 1 | 0 | 0 | 1 | 0 | 1 | 1 | 0 | 1 | 0 | ... |

Figure 35. Manchester Encoding/Decoding

5.5.7.2. Data Whitening

Another technique called whitening or scrambling is widely used for randomizing the user data before radio transmission. The data is whitened using a random sequence on the Tx side and de-whitened on the Rx side using the same sequence. Comparing to Manchester technique it has the advantage of keeping NRZ data rate i.e. actual bit rate is not halved.

The whitening/de-whitening process is enabled if $DcFree = 10$. A 9-bit LFSR is used to generate a random sequence. The payload and 2-byte CRC checksum is then XORed with this random sequence as shown below. The data is de-whitened on the receiver side by XORing with the same random sequence.

Payload whitening/de-whitening is thus made transparent for the user, who still provides/retrieves NRZ data to/from the FIFO.

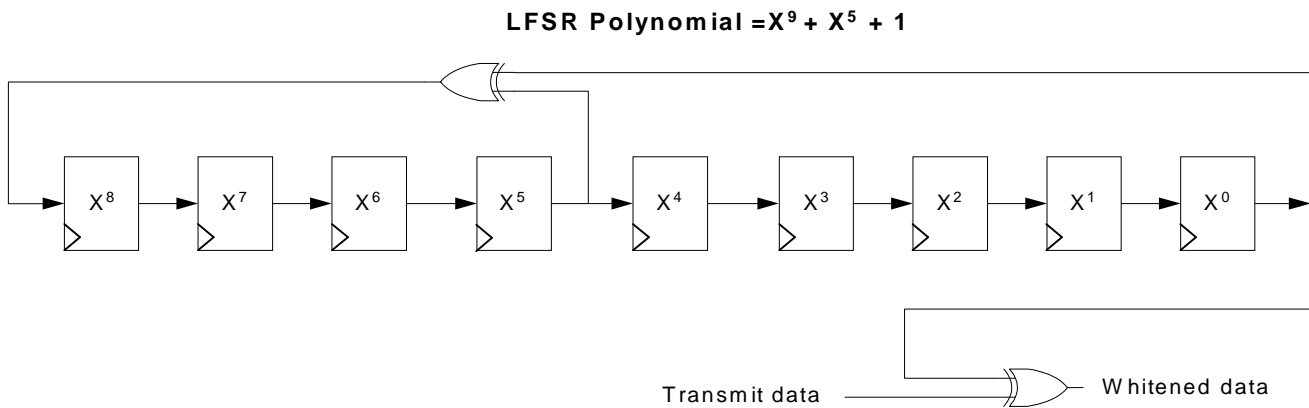


Figure 36. Data Whitening Polynomial

5.5.8. Beacon Tx Mode

In some short range wireless network topologies a repetitive message, also known as beacon, is transmitted periodically by a transmitter. The Beacon Tx mode allows for the re-transmission of the same packet without having to fill the FIFO multiple times with the same data.

When *BeaconOn* in *RegPacketConfig2* is set to 1, the FIFO can be filled only once in Sleep or Stdby mode with the required payload.

After a first transmission, *FifoEmpty* will go high as usual, but the FIFO content will be restored when the chip exits Transmit mode. *FifoEmpty*, *FifoFull* and *FifoLevel* flags are also restored.

This feature is only available in Fixed packet format, with the Payload Length smaller than the FIFO size.

The Beacon Tx mode is exited by setting *BeaconOn* to 0, and clearing the FIFO by setting *FifoOverrun* to 1.

5.6. io-homecontrol[®] Compatibility Mode

The RFM66W features a io-homecontrol[®] compatibility mode. Please contact your local Semtech representative for details on its implementation.

6. Description of the Registers

6.1. Register Table Summary

Table 29 Registers Summary

| Address | Register Name | Reset (built-in) | Default (recommended) | Description |
|---------|------------------|------------------|-----------------------|---|
| 0x00 | RegFifo | 0x00 | | FIFO read/write access |
| 0x01 | RegOpMode | 0x01 | | Operating modes of the transceiver |
| 0x02 | RegBitrateMsb | 0x1A | | Bit Rate setting, Most Significant Bits |
| 0x03 | RegBitrateLsb | 0x0B | | Bit Rate setting, Least Significant Bits |
| 0x04 | RegFdevMsb | 0x00 | | Frequency Deviation setting, Most Significant Bits |
| 0x05 | RegFdevLsb | 0x52 | | Frequency Deviation setting, Least Significant Bits |
| 0x06 | RegFrfMsb | 0xE4 | | RF Carrier Frequency, Most Significant Bits |
| 0x07 | RegFrfMid | 0xC0 | | RF Carrier Frequency, Intermediate Bits |
| 0x08 | RegFrfLsb | 0x00 | | RF Carrier Frequency, Least Significant Bits |
| 0x09 | RegPaConfig | 0x0F | | PA selection and Output Power control |
| 0x0A | RegPaRamp | 0x19 | | Control of the PA ramp time in FSK, low phase noise PLL |
| 0x0B | RegOcp | 0x2B | | Over Current Protection control |
| 0x0C | RegLna | 0x20 | | LNA settings |
| 0x0D | RegRxConfig | 0x08 | | Control of the AFC, AGC, Collision detector |
| 0x0E | RegRssiConfig | 0x02 | | RSSI-related settings |
| 0x0F | RegRssiCollision | 0x0A | | RSSI setting of the Collision detector |
| 0x10 | RegRssiThresh | 0xFF | | RSSI Threshold control |
| 0x11 | RegRssiValue | - | | RSSI value in dBm |
| 0x12 | RegRxBw | 0x15 | | Channel Filter BW Control |
| 0x13 | RegAfcBw | 0x0B | | Channel Filter BW control during the AFC |
| 0x14 | RegOokPeak | 0x28 | | OOK demodulator selection and control in peak mode |
| 0x15 | RegOokFix | 0x0C | | Fixed threshold control of the OOK demodulator |
| 0x16 | RegOokAvg | 0x12 | | Average threshold control of the OOK demodulator |
| 0x17 | Reserved17 | 0x47 | | - |
| 0x18 | Reserved18 | 0x32 | | - |
| 0x19 | Reserved19 | 0x3E | | - |

| Address | Register Name | Reset (built-in) | Default (recommended) | Description |
|-----------|-------------------|------------------|-----------------------|---|
| 0x1A | RegAfcFei | 0x00 | | AFC and FEI control |
| 0x1B | RegAfcMsb | 0x00 | | MSB of the frequency correction of the AFC |
| 0x1C | RegAfcLsb | 0x00 | | LSB of the frequency correction of the AFC |
| 0x1D | RegFeiMsb | 0x00 | | MSB of the calculated frequency error |
| 0x1E | RegFeiLsb | 0x00 | | LSB of the calculated frequency error |
| 0x1F | RegPreambleDetect | 0x40 | | Settings of the Preamble Detector |
| 0x20 | RegRxTimeout1 | 0x00 | | Timeout duration between Rx request and RSSI detection |
| 0x21 | RegRxTimeout2 | 0x00 | | Timeout duration between RSSI detection and <i>PayloadReady</i> |
| 0x22 | RegRxTimeout3 | 0x00 | | Timeout duration between RSSI and <i>SyncAddress</i> |
| 0x23 | RegRxDelay | 0x00 | | Delay between Rx cycles |
| 0x24 | RegOsc | 0x05 | | RC Oscillators Settings, CLKOUT frequency |
| 0x25 | RegPreambleMsb | 0x00 | | Preamble length, MSB |
| 0x26 | RegPreambleLsb | 0x03 | | Preamble length, LSB |
| 0x27 | RegSyncConfig | 0x93 | | Sync Word Recognition control |
| 0x28-0x2F | RegSyncValue1-8 | 0x55 | | Sync Word bytes, 1 through 8 |
| 0x30 | RegPacketConfig1 | 0x90 | | Packet mode settings |
| 0x31 | RegPacketConfig2 | 0x40 | | Packet mode settings |
| 0x32 | RegPayloadLength | 0x40 | | Payload length setting |
| 0x33 | RegNodeAdrs | 0x00 | | Node address |
| 0x34 | RegBroadcastAdrs | 0x00 | | Broadcast address |
| 0x35 | RegFifoThresh | 0x0F | | Fifo threshold, Tx start condition |
| 0x36 | RegSeqConfig1 | 0x00 | | Top level Sequencer settings |
| 0x37 | RegSeqConfig2 | 0x00 | | Top level Sequencer settings |
| 0x38 | RegTimerResol | 0x00 | | Timer 1 and 2 resolution control |
| 0x39 | RegTimer1Coef | 0xF5 | | Timer 1 setting |
| 0x3A | RegTimer2Coef | 0x20 | | Timer 2 setting |
| 0x3B | RegImageCal | 0x82 | | Image calibration engine control |
| 0x3C | RegTemp | - | | Temperature Sensor value |
| 0x3D | RegLowBat | 0x02 | | Low Battery Indicator Settings |
| 0x3E | RegIrqFlags1 | 0x80 | | Status register: PLL Lock state, Timeout, RSSI > Threshold... |

| Address | Register Name | Reset (built-in) | Default (recommended) | Description |
|---------|----------------|------------------|-----------------------|--|
| 0x3F | RegIrqFlags2 | 0x40 | | Status register: FIFO handling flags, Low Battery detection... |
| 0x40 | RegDioMapping1 | 0x00 | | Mapping of pins DIO0 to DIO3 |
| 0x41 | RegDioMapping2 | 0x00 | | Mapping of pins DIO4 and DIO5, ClkOut frequency |
| 0x42 | RegVersion | 0x21 | | Semtech ID relating the silicon revision |
| 0x43 | RegAgcRef | 0x13 | | Adjustment of the AGC thresholds |
| 0x44 | RegAgcThresh1 | 0x0E | | |
| 0x45 | RegAgcThresh2 | 0x5B | | |
| 0x46 | RegAgcThresh3 | 0xDB | | |
| 0x58 | RegTcxo | 0x09 | | TCXO or XTAL input setting |
| 0x5A | RegPaDac | 0x84 | | Higher power settings of the PA |
| 0x5C | RegPll | 0xD0 | | Control of the PLL bandwidth |
| 0x5E | RegPllLowPn | 0xD0 | | Control of the Low Phase Noise PLL bandwidth |
| 0x6C | RegFormerTemp | - | | Stored temperature during the former IQ Calibration |
| 0x70 | RegBitRateFrac | 0x00 | | Fractional part in the Bit Rate division ratio |
| 0x42 + | RegTest | - | | Internal test registers. Do not overwrite |

- Note*
- Reset values are automatically refreshed in the chip at Power On Reset
 - Default values are the Semtech recommended register values, optimizing the device operation
 - Registers for which the Default value differs from the Reset value are denoted by a * in the tables of section 4

6.2. Register Map

Convention: r: read, w: write, p:pulse, x:trigger

Table 30 Register Map

| Name (Address) | Bits | Variable Name | Mode | Default value | Description |
|-------------------------------|------|-------------------|------|---------------|--|
| RegFifo (0x00) | 7-0 | Fifo | rwx | 0x00 | FIFO data input/output |
| Registers for Common settings | | | | | |
| RegOpMode (0x01) | 7 | unused | r | 0x00 | unused |
| | 6-5 | ModulationType | rw | 0x00 | Modulation scheme: 00 → FSK 01 → OOK 10 -11 → reserved |
| | 4-3 | ModulationShaping | rw | 0x00 | Data shaping: In FSK: 00 → no shaping 01 → gaussian filter BT = 1.0 10 → gaussian filter BT = 0.5 11 → gaussian filter BT = 0.3 In OOK: 00 → no shaping 01 → filtering with $f_{cutoff} = bit_rate$ 10 → filtering with $f_{cutoff} = 2 * bit_rate$ (for $bit_rate < 125$ kb/s) 11 → reserved |
| | 2-0 | Mode | rwx | 0x01 | Transceiver modes 000 → Sleep mode 001 → Stdby mode 010 → FS mode TX (FSTx) 011 → Transmitter mode (Tx) 100 → FS mode RX (FSRx) 101 → Receiver mode (Rx) 110 → reserved 111 → reserved |
| RegBitrateMsb (0x02) | 7-0 | BitRate(15:8) | rw | 0x1a | MSB of Bit Rate (chip rate if Manchester encoding is enabled) |
| RegBitrateLsb (0x03) | 7-0 | BitRate(7:0) | rw | 0x0b | LSB of bit rate (chip rate if Manchester encoding is enabled) $BitRate = \frac{FXOSC}{BitRate(15,0) + \frac{BitrateFrac}{16}}$ Default value: 4.8 kb/s |
| RegFdevMsb (0x04) | 7-6 | unused | r | 0x00 | unused |
| | 5-0 | Fdev(13:8) | rw | 0x00 | MSB of the frequency deviation |
| RegFdevLsb (0x05) | 7-0 | Fdev(7:0) | rw | 0x52 | LSB of the frequency deviation $Fdev = Fste\ p \times Fdev(15,0)$ Default value: 5 kHz |

| Name (Address) | Bits | Variable Name | Mode | Default value | Description |
|-------------------------------|------|---------------|------|---------------|--|
| RegFrfMsb (0x06) | 7-0 | Frf(23:16) | rw | 0xe4 | MSB of the RF carrier frequency |
| RegFrfMid (0x07) | 7-0 | Frf(15:8) | rw | 0xc0 | MSB of the RF carrier frequency |
| RegFrfLsb (0x08) | 7-0 | Frf(7:0) | rw | 0x00 | LSB of RF carrier frequency $Frf = Fstep \times Frf(23;0)$ Default value: 915.000 MHz The RF frequency is taken into account internally only when: - entering FSRX/FSTX modes - re-starting the receiver |
| Registers for the Transmitter | | | | | |
| RegPaConfig (0x09) | 7 | PaSelect | rw | 0x00 | Selects PA output pin 0 → RFO pin. Maximum power of +13 dBm 1 → PA_BOOST pin. Maximum power of +20 dBm |
| | 6-4 | unused | r | 0x00 | unused |
| | 3-0 | OutputPower | rw | 0x0f | Output power setting, with 1dB steps $P_{out} = 2 + OutputPower [dBm]$, on PA_BOOST pin $P_{out} = -1 + OutputPower [dBm]$, on RFO pin |
| RegPaRamp (0x0A) | 7-5 | unused | r | - | unused |
| | 4 | LowPnTxPIIOff | rw | 0x01 | Select a higher power, lower phase noise PLL only when the transmitter is used: 0 → Standard PLL used in Rx mode, Lower PN PLL in Tx 1 → Standard PLL used in both Tx and Rx modes |
| | 3-0 | PaRamp | rw | 0x09 | Rise/Fall time of ramp up/down in FSK 0000 → 3.4 ms 0001 → 2 ms 0010 → 1 ms 0011 → 500 us 0100 → 250 us 0101 → 125 us 0110 → 100 us 0111 → 62 us 1000 → 50 us 1001 → 40 us (d) 1010 → 31 us 1011 → 25 us 1100 → 20 us 1101 → 15 us 1110 → 12 us 1111 → 10 us |

| Name (Address) | Bits | Variable Name | Mode | Default value | Description |
|----------------------------|------|---------------|------|---------------|--|
| RegOcp (0x0B) | 7-6 | unused | r | 0x00 | unused |
| | 5 | OcpOn | rw | 0x01 | Enables overload current protection (OCP) for the PA: 0 → OCP disabled 1 → OCP enabled |
| | 4-0 | OcpTrim | rw | 0x0b | Trimming of OCP current: $I_{max} = 45+5*OcpTrim$ [mA] if $OcpTrim \leq 15$ (120 mA) / $I_{max} = -30+10*OcpTrim$ [mA] if $15 < OcpTrim \leq 27$ (130 to 240 mA) $I_{max} = 240mA$ for higher settings Default $I_{max} = 100mA$ |
| Registers for the Receiver | | | | | |
| RegLna (0x0C) | 7-5 | LnaGain | rwx | 0x01 | LNA gain setting: 000 → reserved 001 → G1 = highest gain 010 → G2 = highest gain – 6 dB 011 → G3 = highest gain – 12 dB 100 → G4 = highest gain – 24 dB 101 → G5 = highest gain – 36 dB 110 → G6 = highest gain – 48 dB 111 → reserved Note: Reading this address always returns the current LNA gain (which may be different from what had been previously selected if AGC is enabled). |
| | 4-2 | - | r | 0x00 | unused |
| | 1-0 | LnaBoost | rw | 0x00 | Improves the system Noise Figure at the expense of Rx current consumption: 00 → Default setting, meeting the specification 11 → Improved sensitivity |

| Name (Address) | Bits | Variable Name | Mode | Default value | Description |
|-------------------------|------|-------------------------|------|---------------|--|
| RegRxConfig (0x0d) | 7 | RestartRxOnCollision | rw | 0x00 | Turns on the mechanism restarting the receiver automatically if it gets saturated or a packet collision is detected 0 → No automatic Restart 1 → Automatic restart On |
| | 6 | RestartRxWithoutPllLock | wp | 0x00 | Triggers a manual Restart of the Receiver chain when set to 1. Use this bit when there is no frequency change, RestartRxWithPllLock otherwise. |
| | 5 | RestartRxWithPllLock | wp | 0x00 | Triggers a manual Restart of the Receiver chain when set to 1. Use this bit when there is a frequency change, requiring some time for the PLL to re-lock. |
| | 4 | AfcAutoOn | rw | 0x00 | 0 → No AFC performed at receiver startup 1 → AFC is performed at each receiver startup |
| | 3 | AgcAutoOn | rw | 0x01 | 0 → LNA gain forced by the LnaGain Setting 1 → LNA gain is controlled by the AGC |
| | 2 | AgcOnPreamble | rw | 0x00 | When set to 1, the AGC will adjust the LNA gain until the preamble is detected, and fix LNA gain only when on a Preamble is detected. The size of the qualifying preamble is set in <i>PreambleDetectSize</i> . When set to 0, the AGC will adjust the LNA gain based on RSSI information |
| | 1 | StartDemodOnPreamble | rw | 0x00 | Condition required for the circuit to provide valid data to the baseband |
| | 0 | StartDemodOnRssi | rw | 0x00 | Condition required for the circuit to provide valid data to the baseband |
| RegRssiConfig (0x0e) | 7-3 | RssiOffset | rw | 0x00 | Signed RSSI offset, to compensate for the possible losses/gains in the front-end (LNA, SAW filter...) 1dB / LSB, 2's complement format |
| | 2-0 | RssiSmoothing | rw | 0x02 | Defines the number of samples taken to average the RSSI result: 000 → 2 samples used 001 → 4 samples used 010 → 8 samples used 011 → 16 samples used 100 → 32 samples used 101 → 64 samples used 110 → 128 samples used 111 → 256 samples used |
| RegRssiCollision (0x0f) | 7-0 | RssiCollisionThreshold | rw | 0x0a | Sets the threshold used to consider that an interferer is detected, witnessing a packet collision. 1dB/LSB (only RSSI increase) Default: 10dB |
| RegRssiThresh (0x10) | 7-0 | RssiThreshold | rw | 0xff | RSSI trigger level for the Rssi interrupt : - RssiThreshold / 2 [dBm] |
| RegRssiValue (0x11) | 7-0 | RssiValue | rw | - | Absolute value of the RSSI in dBm, 0.5dB steps. RSSI = - RssiValue/2 [dBm] |

| Name (Address) | Bits | Variable Name | Mode | Default value | Description |
|-------------------|------|----------------------|------|---------------|---|
| RegRxBw (0x12) | 7 | unused | r | - | unused |
| | 6-5 | reserved | rw | 0x00 | reserved |
| | 4-3 | RxBwMant | rw | 0x02 | Channel filter bandwidth control: 00 → RxBwMant = 16 10 → RxBwMant = 24 01 → RxBwMant = 20 11 → reserved |
| | 2-0 | RxBwExp | rw | 0x05 | Channel filter bandwidth control: FSK Mode: $RxBw = \frac{FXOSC}{RxBwMant \times 2^{RxBwExp + 2}}$ |
| RegAfcBw (0x13) | 7-5 | reserved | rw | 0x00 | reserved |
| | 4-3 | RxBwMantAfc | rw | 0x01 | RxBwMant parameter used during the AFC |
| | 2-0 | RxBwExpAfc | rw | 0x03 | RxBwExp parameter used during the AFC |
| RegOokPeak (0x14) | 7-6 | reserved | rw | 0x00 | reserved |
| | 5 | BitSyncOn | rw | 0x01 | Enables the Bit Synchronizer. 0 → Bit Sync disabled (not possible in Packet mode) 1 → Bit Sync enabled |
| | 4-3 | OokThreshType | rw | 0x01 | Selects the type of threshold in the OOK data slicer: 00 → fixed threshold 10 → average mode 01 → peak mode (default) 11 → reserved |
| | 2-0 | OokPeakTheshStep | rw | 0x00 | Size of each decrement of the RSSI threshold in the OOK demodulator: 000 → 0.5 dB 001 → 1.0 dB 010 → 1.5 dB 011 → 2.0 dB 100 → 3.0 dB 101 → 4.0 dB 110 → 5.0 dB 111 → 6.0 dB |
| RegOokFix (0x15) | 7-0 | OokFixedThreshold | rw | 0x0C | Fixed threshold for the Data Slicer in OOK mode Floor threshold for the Data Slicer in OOK when Peak mode is used |
| RegOokAvg (0x16) | 7-5 | OokPeakThreshDec | rw | 0x00 | Period of decrement of the RSSI threshold in the OOK demodulator: 000 → once per chip 001 → once every 2 chips 010 → once every 4 chips 011 → once every 8 chips 100 → twice in each chip 101 → 4 times in each chip 110 → 8 times in each chip 111 → 16 times in each chip |
| | 4 | reserved | rw | 0x01 | reserved |
| | 3-2 | OokAverageOffset | rw | 0x00 | Static offset added to the threshold in average mode in order to reduce glitching activity (OOK only): 00 → 0.0 dB 10 → 4.0 dB 01 → 2.0 dB 11 → 6.0 dB |
| | 1-0 | OokAverageThreshFilt | rw | 0x02 | Filter coefficients in average mode of the OOK demodulator: 00 → $f_C \approx \text{chip rate} / 32.\pi$ 01 → $f_C \approx \text{chip rate} / 8.\pi$ 10 → $f_C \approx \text{chip rate} / 4.\pi$ 11 → $f_C \approx \text{chip rate} / 2.\pi$ |

| Name (Address) | Bits | Variable Name | Mode | Default value | Description |
|--------------------------|------|----------------------|------|----------------------|--|
| RegRes17 to RegRes19 | 7-0 | reserved | rw | 0x47 0x32 0x3E | reserved. Keep the Reset values. |
| RegAfcFei (0x1a) | 7-5 | unused | r | - | unused |
| | 4 | AgcStart | wp | 0x00 | Triggers an AGC sequence when set to 1. |
| | 3 | reserved | rw | 0x00 | reserved |
| | 2 | unused | - | - | unused |
| | 1 | AfcClear | wp | 0x00 | Clear AFC register set in Rx mode. Always reads 0. |
| | 0 | AfcAutoClearOn | rw | 0x00 | Only valid if AfcAutoOn is set 0 → AFC register is not cleared at the beginning of the automatic AFC phase 1 → AFC register is cleared at the beginning of the automatic AFC phase |
| RegAfcMsb (0x1b) | 7-0 | AfcValue(15:8) | rw | 0x00 | MSB of the AfcValue, 2's complement format. Can be used to overwrite the current AFC value |
| RegAfcLsb (0x1c) | 7-0 | AfcValue(7:0) | rw | 0x00 | LSB of the AfcValue, 2's complement format. Can be used to overwrite the current AFC value |
| RegFeiMsb (0x1d) | 7-0 | FeiValue(15:8) | rw | - | MSB of the measured frequency offset, 2's complement |
| RegFeiLsb (0x1e) | 7-0 | FeiValue(7:0) | rw | - | LSB of the measured frequency offset, 2's complement <i>Frequency error</i> = FeiValue x Fstep |
| RegPreambleDetect (0x1f) | 7 | PreambleDetectorOn | rw | 0x00 | Enables Preamble detector when set to 1. The AGC settings supersede this bit during the startup / AGC phase. 0 → Turned off 1 → Turned on |
| | 6-5 | PreambleDetectorSize | rw | 0x02 | Number of Preamble bytes to detect to trigger an interrupt 00 → 1 byte 10 → 3 bytes 01 → 2 bytes 11 → Reserved |
| | 4-0 | PreambleDetectorTol | rw | 0x00 | Number of chip errors tolerated over PreambleDetectorSize. 4 chips per bit. |
| RegRxTimeout1 (0x20) | 7-0 | TimeoutRxRssi | rw | 0x00 | <i>Timeout</i> interrupt is generated $TimeoutRxRssi * 16 * T_{bit}$ after switching to Rx mode if <i>Rssi</i> interrupt doesn't occur (i.e. $RssiValue > RssiThreshold$) 0x00: <i>TimeoutRxRssi</i> is disabled |
| RegRxTimeout2 (0x21) | 7-0 | TimeoutRxPreamble | rw | 0x00 | <i>Timeout</i> interrupt is generated $TimeoutRxPreamble * 16 * T_{bit}$ after switching to Rx mode if <i>Preamble</i> interrupt doesn't occur 0x00: <i>TimeoutRxPreamble</i> is disabled |
| RegRxTimeout3 (0x22) | 7-0 | TimeoutSignalSync | rw | 0x00 | <i>Timeout</i> interrupt is generated $TimeoutSignalSync * 16 * T_{bit}$ after the Rx mode is programmed, if <i>SyncAddress</i> doesn't occur 0x00: <i>TimeoutSignalSync</i> is disabled |

| Name (Address) | Bits | Variable Name | Mode | Default value | Description |
|---------------------------|------|--------------------|------|---------------|--|
| RegRxDelay (0x23) | 7-0 | InterPacketRxDelay | rw | 0x00 | Additional delay before an automatic receiver restart is launched: Delay = InterPacketRxDelay*4*Tbit |
| RC Oscillator registers | | | | | |
| RegOsc (0x24) | 7-4 | unused | r | - | unused |
| | 3 | RcCalStart | rwp | 0x00 | Triggers the calibration of the RC oscillator when set. Always reads 0. RC calibration must be triggered in Standby mode. |
| | 2-0 | ClkOut | rw | 0x05 | Selects CLKOUT frequency: 000 → FXOSC 001 → FXOSC / 2 010 → FXOSC / 4 011 → FXOSC / 8 100 → FXOSC / 16 101 → FXOSC / 32 110 → RC (automatically enabled) 111 → OFF |
| Packet Handling registers | | | | | |
| RegPreambleMsb (0x25) | 7-0 | PreambleSize(15:8) | rw | 0x00 | Size of the preamble to be sent (from <i>TxStartCondition</i> fulfilled). (MSB byte) |
| RegPreambleLsb (0x26) | 7-0 | PreambleSize(7:0) | rw | 0x03 | Size of the preamble to be sent (from <i>TxStartCondition</i> fulfilled). (LSB byte) |
| RegSyncConfig (0x27) | 7-6 | AutoRestartRxMode | rw | 0x02 | Controls the automatic restart of the receiver after the reception of a valid packet (<i>PayloadReady</i> or <i>CrcOk</i>): 00 → Off 01 → On, without waiting for the PLL to re-lock 10 → On, wait for the PLL to lock (frequency changed) 11 → reserved |
| | 5 | PreamblePolarity | rw | 0x00 | Sets the polarity of the Preamble 0 → 0xAA (default) 1 → 0x55 |
| | 4 | SyncOn | rw | 0x01 | Enables the Sync word generation and detection: 0 → Off 1 → On |
| | 3 | FifoFillCondition | rw | 0x00 | FIFO filling condition: 0 → if <i>SyncAddress</i> interrupt occurs 1 → as long as <i>FifoFillCondition</i> is set |
| | 2-0 | SyncSize | rw | 0x03 | Size of the Sync word: (<i>SyncSize</i> + 1) bytes, (<i>SyncSize</i>) bytes if <i>ioHomeOn</i> =1 |
| RegSyncValue1 (0x28) | 7-0 | SyncValue(63:56) | rw | 0x55 | 1 st byte of Sync word. (MSB byte) Used if <i>SyncOn</i> is set. |
| RegSyncValue2 (0x29) | 7-0 | SyncValue(55:48) | rw | 0x55 | 2 nd byte of Sync word Used if <i>SyncOn</i> is set and (<i>SyncSize</i> + 1) >= 2. |
| RegSyncValue3 (0x2a) | 7-0 | SyncValue(47:40) | rw | 0x55 | 3 rd byte of Sync word. Used if <i>SyncOn</i> is set and (<i>SyncSize</i> + 1) >= 3. |

| Name (Address) | Bits | Variable Name | Mode | Default value | Description |
|-------------------------|------|------------------|------|---------------|---|
| RegSyncValue4 (0x2b) | 7-0 | SyncValue(39:32) | rw | 0x55 | 4 th byte of Sync word. Used if <i>SyncOn</i> is set and $(SyncSize + 1) \geq 4$. |
| RegSyncValue5 (0x2c) | 7-0 | SyncValue(31:24) | rw | 0x55 | 5 th byte of Sync word. Used if <i>SyncOn</i> is set and $(SyncSize + 1) \geq 5$. |
| RegSyncValue6 (0x2d) | 7-0 | SyncValue(23:16) | rw | 0x55 | 6 th byte of Sync word. Used if <i>SyncOn</i> is set and $(SyncSize + 1) \geq 6$. |
| RegSyncValue7 (0x2e) | 7-0 | SyncValue(15:8) | rw | 0x55 | 7 th byte of Sync word. Used if <i>SyncOn</i> is set and $(SyncSize + 1) \geq 7$. |
| RegSyncValue8 (0x2f) | 7-0 | SyncValue(7:0) | rw | 0x55 | 8 th byte of Sync word. Used if <i>SyncOn</i> is set and $(SyncSize + 1) = 8$. |
| RegPacketConfig1 (0x30) | 7 | PacketFormat | rw | 0x01 | Defines the packet format used: 0 → Fixed length 1 → Variable length |
| | 6-5 | DcFree | rw | 0x00 | Defines DC-free encoding/decoding performed: 00 → None (Off) 01 → Manchester 10 → Whitening 11 → reserved |
| | 4 | CrcOn | rw | 0x01 | Enables CRC calculation/check (Tx/Rx): 0 → Off 1 → On |
| | 3 | CrcAutoClearOff | rw | 0x00 | Defines the behavior of the packet handler when CRC check fails: 0 → Clear FIFO and restart new packet reception. No <i>PayloadReady</i> interrupt issued. 1 → Do not clear FIFO. <i>PayloadReady</i> interrupt issued. |
| | 2-1 | AddressFiltering | rw | 0x00 | Defines address based filtering in Rx: 00 → None (Off) 01 → Address field must match <i>NodeAddress</i> 10 → Address field must match <i>NodeAddress</i> or <i>BroadcastAddress</i> 11 → reserved |
| | 0 | CrcWhiteningType | rw | 0x00 | Selects the CRC and whitening algorithms: 0 → CCITT CRC implementation with standard whitening 1 → IBM CRC implementation with alternate whitening |

| Name (Address) | Bits | Variable Name | Mode | Default value | Description |
|-------------------------|------|---------------------|------|---------------|---|
| RegPacketConfig2 (0x31) | 7 | unused | r | - | unused |
| | 6 | DataMode | rw | 0x01 | Data processing mode: 0 → Continuous mode 1 → Packet mode |
| | 5 | IoHomeOn | rw | 0x00 | Enables the ioHomeControl compatibility mode 0 → Disabled 1 → ioHome enabled |
| | 4 | IoHomePowerFrame | rw | 0x00 | reserved - Linked to ioHomeControl compatibility mode |
| | 3 | BeaconOn | rw | 0x00 | Enables the Beacon mode in Fixed packet format |
| | 2-0 | PayloadLength(10:8) | rw | 0x00 | Packet Length Most significant bits |
| RegPayloadLength (0x32) | 7-0 | PayloadLength(7:0) | rw | 0x40 | If PacketFormat = 0 (fixed), payload length. If PacketFormat = 1 (variable), max length in Rx, not used in Tx. |
| RegNodeAdrs (0x33) | 7-0 | NodeAddress | rw | 0x00 | Node address used in address filtering. |
| RegBroadcastAdrs (0x34) | 7-0 | BroadcastAddress | rw | 0x00 | Broadcast address used in address filtering. |
| RegFifoThresh (0x35) | 7 | TxStartCondition | rw | 0x00 | Defines the condition to start packet transmission : 0 → <i>FifoLevel</i> (i.e. the number of bytes in the FIFO exceeds <i>FifoThreshold</i>) 1 → <i>FifoEmpty goes low</i> (i.e. at least one byte in the FIFO) |
| | 6 | unused | r | - | unused |
| | 5-0 | FifoThreshold | rw | 0x0f | Used to trigger <i>FifoLevel</i> interrupt, when: nbr of bytes in FIFO >= FifoThreshold + 1 |
| Sequencer registers | | | | | |

| Name (Address) | Bits | Variable Name | Mode | Default value | Description |
|----------------------|------|---------------------------------|------|---------------|--|
| RegSeqConfig1 (0x36) | 7 | SequencerStart | t | 0x00 | Controls the top level Sequencer When set to '1', executes the "Start" transition. The sequencer can only be enabled when the chip is in Sleep or Standby mode. |
| | 6 | SequencerStop | t | 0x00 | Forces the Sequencer to go to Idle state Always reads '0' |
| | 5 | SequencerLowPowerMode | rw | 0x00 | Selects chip mode in LowPower state: 0: Stdby mode 1: Sleep mode |
| | 4-3 | SequencerTransitionFromIdle | rw | 0x00 | Control state-machine transition from the Idle state: 00: to LowPower or Idle state on a SequencerStart command, depending on SequencerLowPowerState 01: to Receive state on a SequencerStart command 10: to Transmit state on a SequencerStart command 11: to WaitForFifo on a SequencerStart command |
| | 2 | SequencerLowPowerState | rw | 0x00 | Defines the low power state of the Sequencer, reached at the end of any action (transmission, reception, etc...) 0: to Idle state 1: to LowPower state |
| | 1 | SequencerTransitionFromLowPower | rw | 0x00 | Control the Sequencer transition from the LowPower state: 0: to Transmit state on a Timer 1 interrupt 1: to Receive state on a Timer 1 interrupt |
| | 0 | SequencerTransitionFromTransmit | rw | 0x00 | Control the Sequencer transition from the Transmit state: 0: to LowPower or Idle state on a PacketSent interrupt, depending on SequencerLowPowerState 1: to Receive state on a PacketSent interrupt |

| Name (Address) | Bits | Variable Name | Mode | Default value | Description |
|----------------------|------|---------------------------------------|------|---------------|--|
| RegSeqConfig2 (0x37) | 7-5 | SequencerTransitionFromReceive | rw | 0x00 | Control the Sequencer transition from the Receive state 000 and 111: unused 001: to PacketReceived state on a PayloadReady interrupt 010: to LowPower or Idle state on a PayloadReady interrupt, depending on SequencerLowPowerState 011: to PacketReceived state on a CrcOk interrupt. If the CRC is disabled the PayloadReady interrupt, firing when enough bytes are received, will drive the Sequencer to the PacketReceived state, too. 100: to Idle state on a Rssi interrupt 101: to Idle state on a SyncAddress interrupt 110: to Idle state on a PreambleDetect interrupt Irrespective of this setting, transition to LowPower or Idle state on a Timer2 interrupt, depending on SequencerLowPowerState |
| | 4-3 | SequencerTransitionFromRxTimeout | rw | 0x00 | Control the state-machine transition from the Receive state on a RxTimeout interrupt (and on PayloadReady if SequencerTransitionFromReceive = 011): 00: to ReceiveRestart 01: to Transmit 10: to LowPower or Idle state, depending on SequencerLowPowerState 11: to Idle state |
| | 2-0 | SequencerTransitionFromPacketReceived | rw | 0x00 | Control the state-machine transition from the PacketReceived state: 000: to Idle state 001: to Transmit on a FifoEmpty interrupt 010: to LowPower or Idle state on FifoEmpty, depending on SequencerLowPowerState 011: to Receive via FS mode, if frequency was changed 100: to Receive state (no frequency change) |
| RegTimerResol (0x38) | 7-4 | unused | r | - | unused |
| | 3-2 | Timer1Resolution | rw | 0x00 | Resolution of Timer 1 00: Timer1 disabled 01: 64 us 10: 4.1 ms 11: 262 ms |
| | 1-0 | Timer2Resolution | rw | 0x00 | Resolution of Timer 2 00: Timer2 disabled 01: 64 us 10: 4.1 ms 11: 262 ms |
| RegTimer1Coef (0x39) | 7-0 | Timer1Coefficient | rw | 0xf5 | Multiplying coefficient for Timer 1 |
| RegTimer2Coef (0x3a) | 7-0 | Timer2Coefficient | rw | 0x20 | Multiplying coefficient for Timer 2 |
| Services registers | | | | | |

| Name (Address) | Bits | Variable Name | Mode | Default value | Description |
|--------------------|------|-----------------|------|---------------|---|
| RegImageCal (0x3b) | 7 | AutoImageCalOn | rw | 0x01 | Controls the Image calibration mechanism 0 → Calibration of the receiver depending on the temperature is disabled 1 → Calibration of the receiver depending on the temperature enabled. |
| | 6 | ImageCalStart | wp | - | Triggers the IQ and RSSI calibration when set. |
| | 5 | ImageCalRunning | r | 0x00 | Set to 1 while the Image and RSSI calibration are running. Toggles back to 0 when the process is completed |
| | 4 | unused | r | - | unused |
| | 3 | TempChange | r | 0x00 | IRQ flag witnessing a temperature change exceeding TempThreshold since the last Image and RSSI calibration: 0 → Temperature change lower than TempThreshold 1 → Temperature change greater than TempThreshold |
| | 2-1 | TempThreshold | rw | 0x01 | Temperature change threshold to trigger a new I/Q calibration 00 → 5 °C 01 → 10 °C 10 → 15 °C 11 → 20 °C |
| | 0 | TempMonitorOff | rw | 0x00 | Controls the temperature monitor operation: 0 → Temperature monitoring done in all modes except Sleep and Standby 1 → Temperature monitoring stopped. |
| RegTemp (0x3c) | 7-0 | TempValue | r | - | Measured temperature -1°C per Lsb Needs calibration for absolute accuracy |
| RegLowBat (0x3d) | 7-4 | unused | r | - | unused |
| | 3 | LowBatOn | rw | 0x00 | Low Battery detector enable signal 0 → LowBat detector disabled 1 → LowBat detector enabled |
| | 2-0 | LowBatTrim | rw | 0x02 | Trimming of the LowBat threshold: 000 → 1.695 V 001 → 1.764 V 010 → 1.835 V (d) 011 → 1.905 V 100 → 1.976 V 101 → 2.045 V 110 → 2.116 V 111 → 2.185 V |
| Status registers | | | | | |

| Name (Address) | Bits | Variable Name | Mode | Default value | Description |
|------------------------|------|------------------|------|---------------|---|
| ReglRqFlags1 (0x3e) | 7 | ModeReady | r | - | Set when the operation mode requested in <i>Mode</i> , is ready - Sleep: Entering Sleep mode - Standby: XO is running - FS: PLL is locked - Rx: RSSI sampling starts - Tx: PA ramp-up completed Cleared when changing the operating mode. |
| | 6 | RxReady | r | - | Set in Rx mode, after RSSI, AGC and AFC. Cleared when leaving Rx. |
| | 5 | TxReady | r | - | Set in Tx mode, after PA ramp-up. Cleared when leaving Tx. |
| | 4 | PlILock | r | - | Set (in FS, Rx or Tx) when the PLL is locked. Cleared when it is not. |
| | 3 | Rssi | rwp | - | Set in Rx when the <i>RssiValue</i> exceeds <i>RssiThreshold</i> . Cleared when leaving Rx or setting this bit to 1. |
| | 2 | Timeout | r | - | Set when a timeout occurs Cleared when leaving Rx or FIFO is emptied. |
| | 1 | PreambleDetect | rwp | - | Set when the Preamble Detector has found valid Preamble. bit clear when set to 1 |
| | 0 | SyncAddressMatch | rwp | - | Set when Sync and Address (if enabled) are detected. Cleared when leaving Rx or FIFO is emptied. This bit is read only in Packet mode, rwc in Continuous mode |
| ReglRqFlags2 (0x3f) | 7 | FifoFull | r | - | Set when FIFO is full (i.e. contains 66 bytes), else cleared. |
| | 6 | FifoEmpty | r | - | Set when FIFO is empty, and cleared when there is at least 1 byte in the FIFO. |
| | 5 | FifoLevel | r | - | Set when the number of bytes in the FIFO strictly exceeds <i>FifoThreshold</i> , else cleared. |
| | 4 | FifoOverrun | rwp | - | Set when FIFO overrun occurs. (except in Sleep mode) Flag(s) and FIFO are cleared when this bit is set. The FIFO then becomes immediately available for the next transmission / reception. |
| | 3 | PacketSent | r | - | Set in Tx when the complete packet has been sent. Cleared when exiting Tx |
| | 2 | PayloadReady | r | - | Set in Rx when the payload is ready (i.e. last byte received and CRC, if enabled and <i>CrcAutoClearOff</i> is cleared, is Ok). Cleared when FIFO is empty. |
| | 1 | CrcOk | r | - | Set in Rx when the CRC of the payload is Ok. Cleared when FIFO is empty. |
| | 0 | LowBat | rwp | - | Set when the battery voltage drops below the Low Battery threshold. Cleared only when set to 1 by the user. |
| IO control registers | | | | | |

| Name (Address) | Bits | Variable Name | Mode | Default value | Description | | |
|-----------------------|------|-------------------|------|---------------|---|--|---|
| RegDioMapping1 (0x40) | 7-6 | Dio0Mapping | rw | 0x00 | Mapping of pins DIO0 to DIO5 See Table 26 for mapping in Continuous mode See Table 27 for mapping in Packet mode | | |
| | 5-4 | Dio1Mapping | rw | 0x00 | | | |
| | 3-2 | Dio2Mapping | rw | 0x00 | | | |
| | 1-0 | Dio3Mapping | rw | 0x00 | | | |
| RegDioMapping2 (0x41) | 7-6 | Dio4Mapping | rw | 0x00 | | Mapping of pins DIO0 to DIO5 See Table 26 for mapping in Continuous mode See Table 27 for mapping in Packet mode | |
| | 5-4 | Dio5Mapping | rw | 0x00 | | | |
| | 3-1 | reserved | rw | 0x00 | | | reserved. Retain default value |
| | 0 | MapPreambleDetect | rw | 0x00 | | | Allows the mapping of either Rssi Or PreambleDetect to the DIO pins, as summarized on Table 26 and Table 27 0 → Rssi interrupt 1 → PreambleDetect interrupt |
| Version register | | | | | | | |
| RegVersion (0x42) | 7-0 | Version | r | 0x21 | Version code of the chip. Bits 7-4 give the full revision number; bits 3-0 give the metal mask revision number. | | |
| Additional registers | | | | | | | |
| RegAgcRef (0x43) | 7-6 | unused | r | - | unused | | |
| | 5-0 | AgcReferenceLevel | rw | 0x13 | Sets the floor reference for all AGC thresholds | | |
| RegAgcThresh1 (0x44) | 7-5 | unused | r | - | unused | | |
| | 4-0 | AgcStep1 | rw | 0x0e | Defines the 1st AGC Threshold | | |
| RegAgcThresh2 (0x45) | 7-4 | AgcStep2 | rw | 0x05 | Defines the 2nd AGC Threshold: | | |
| | 3-0 | AgcStep3 | rw | 0x0b | Defines the 3rd AGC Threshold: | | |
| RegAgcThresh3 (0x46) | 7-4 | AgcStep4 | rw | 0x0d | Defines the 4th AGC Threshold: | | |
| | 3-0 | AgcStep5 | rw | 0x0b | Defines the 5th AGC Threshold: | | |
| RegTcxo (0x58) | 7-5 | reserved | rw | 0x00 | reserved. Retain default value | | |
| | 4 | TcxoInputOn | rw | 0x00 | Controls the crystal oscillator 0 → Crystal Oscillator with external Crystal 1 → External clipped sine TCXO AC-connected to XTA pin | | |
| | 3-0 | reserved | rw | 0x09 | Reserved. Retain default value. | | |
| RegPaDac (0x5a) | 7-3 | reserved | rw | 0x10 | reserved. Retain default value | | |
| | 2-0 | PaDac | rw | 0x04 | Enables the +20dBm option on PA_BOOST pin 0x04 → Default value 0x07 → +20dBm on PA_BOOST when OutputPower=1111 | | |
| RegPll (0x5c) | 7-6 | PllBandwidth | rw | 0x03 | Controls the PLL bandwidth: 00 → 75 kHz 10 → 225 kHz 01 → 150 kHz 11 → 300 kHz | | |
| | 5-0 | reserved | rw | 0x10 | reserved. Retain default value | | |

| Name (Address) | Bits | Variable Name | Mode | Default value | Description |
|-----------------------|------|---------------|------|---------------|--|
| RegPIILowPn (0x5e) | 7-6 | PIIBandwidth | rw | 0x03 | Controls the Low Phase Noise PLL bandwidth: 00 → 75 kHz 10 → 225 kHz 01 → 150 kHz 11 → 300 kHz |
| | 5-0 | reserved | rw | 0x10 | reserved. Retain default value |
| RegFormerTemp (0x6c) | 7-0 | FormerTemp | rw | - | Temperature saved during the latest IQ (RSSI and Image) calibrated. Same format as TempValue in RegTemp. |
| RegBitrateFrac (0x70) | 7-4 | unused | r | 0x00 | unused |
| | 3-0 | BitRateFrac | rw | 0x00 | Fractional part of the bit rate divider (Only valid for FSK) If BitRateFrac > 0 then: $BitRate = \frac{FXOSC}{BitRate(15,0) + \frac{BitrateFrac}{16}}$ |

7. Application Information

7.1. Crystal Resonator Specification

Table 31 shows the crystal resonator specification for the crystal reference oscillator circuit of the RFM66W. This specification covers the full range of operation of the RFM66W and is employed in the reference design.

Table 31 Crystal Specification

| Symbol | Description | Conditions | Min | Typ | Max | Unit |
|--------|---------------------------|-------------------------|-----|-----|-----|------|
| FXOSC | XTAL Frequency | | - | 32 | - | MHz |
| RS | XTAL Serial Resistance | | - | 30 | 140 | ohms |
| C0 | XTAL Shunt Capacitance | | - | 2.8 | 7 | pF |
| CFOOT | External Foot Capacitance | On each pin XTA and XTB | 8 | 15 | 22 | pF |
| CLOAD | Crystal Load Capacitance | | 6 | - | 12 | pF |

- Notes
- the initial frequency tolerance, temperature stability and ageing performance should be chosen in accordance with the target operating temperature range and the receiver bandwidth selected.
 - the loading capacitance should be applied externally, and adapted to the actual Cload specification of the XTAL.

7.2. Reset of the Chip

A power-on reset of the RFM66W is triggered at power up. Additionally, a manual reset can be issued by controlling pin 6.

7.2.1. POR

If the application requires the disconnection of VDD from the RFM66W, despite of the extremely low Sleep Mode current, the user should wait for 10 ms from the end of the POR cycle before commencing communications over the SPI bus. Pin 6 (Reset) should be left floating during the POR sequence.

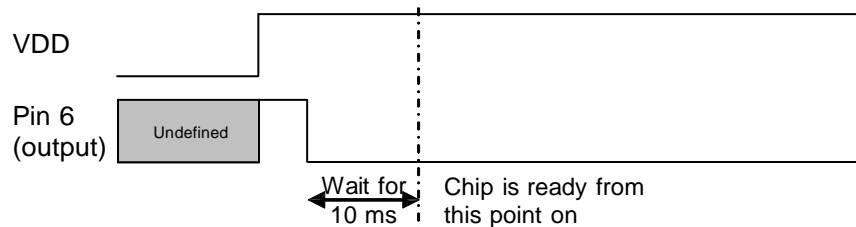


Figure 37. POR Timing Diagram

Please note that any CLKOUT activity can also be used to detect that the chip is ready.

7.2.2. Manual Reset

A manual reset of the RFM66W is possible even for applications in which VDD cannot be physically disconnected. Pin 6 should be pulled high for a hundred microseconds, and then released. The user should then wait for 5 ms before using the chip.

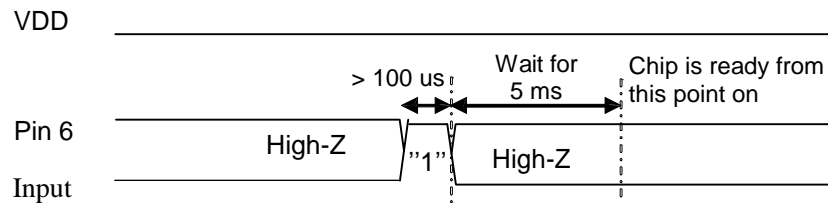


Figure 38. Manual Reset Timing Diagram

Note whilst pin 6 is driven high, an over current consumption of up to ten milliamps can be seen on VDD.

7.3. Reference Designs

Please contact your representative for evaluation tools, reference designs and design assistance. Note that all schematics shown in this section are full schematics, listing ALL required components, including decoupling capacitors.

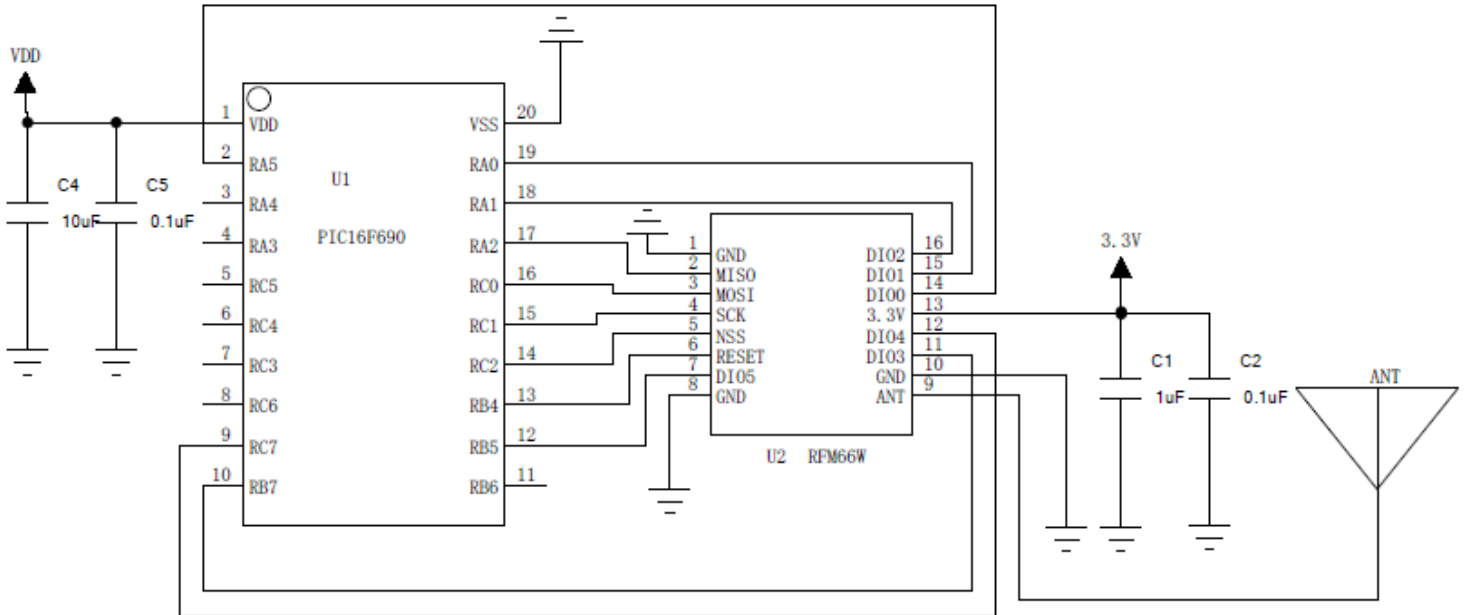


Figure 41: +20dBm Schematic

7.4. Example CRC Calculation

The following routine(s) may be implemented to mimic the CRC calculation of the RFM66W:

```

1 // CRC types
2 #define CRC_TYPE_CCITT 0
3 #define CRC_TYPE_IBM 1
4
5 // Polynomial = X^16 + X^12 + X^5 + 1
6 #define POLYNOMIAL_CCITT 0x1021
7 // Polynomial = X^16 + X^15 + X^2 + 1
8 #define POLYNOMIAL_IBM 0x8005
9
10 // Seeds
11 #define CRC_IBM_SEED 0xFFFF
12 #define CRC_CCITT_SEED 0x1D0F
13
14 /*
15  * CRC algorithm implementation
16  *
17  * \param[IN] crc Previous CRC value
18  * \param[IN] data New data to be added to the CRC
19  * \param[IN] polynomial CRC polynomial selection [CRC_TYPE_CCITT, CRC_TYPE_IBM]
20  *
21  * \retval crc New computed CRC
22  */
23 U16 ComputeCrc( U16 crc, U8 data, U16 polynomial )
24 {
25     U8 i;
26     for( i = 0; i < 8; i++ )
27     {
28         if( ( ( ( crc & 0x8000 ) >> 8 ) ^ ( data & 0x80 ) ) != 0 )
29         {
30             crc <<= 1; // shift left once
31             crc ^= polynomial; // XOR with polynomial
32         }
33         else
34         {
35             crc <<= 1; // shift left once
36         }
37         data <<= 1; // Next data bit
38     }
39     return crc;
40 }
41
42 /*
43  * CRC algorithm implementation
44  *
45  * \param[IN] buffer Array containing the data
46  * \param[IN] bufferLength Buffer length
47  * \param[IN] crcType Selects the CRC polynomial [CRC_TYPE_CCITT, CRC_TYPE_IBM]
48  *
49  * \retval crc Buffer computed CRC
50  */
51 U16 RadioPacketComputeCrc( U8 *buffer, U8 bufferLength, U8 crcType )
52 {
53     U8 i;
54     U16 crc;
55     U16 polynomial;
56
57     polynomial = ( crcType == CRC_TYPE_IBM ) ? POLYNOMIAL_IBM : POLYNOMIAL_CCITT;
58     crc = ( crcType == CRC_TYPE_IBM ) ? CRC_IBM_SEED : CRC_CCITT_SEED;
59
60     for( i = 0; i < bufferLength; i++ )
61     {
62         crc = ComputeCrc( crc, buffer[i], polynomial );
63     }
64
65     if( crcType == CRC_TYPE_IBM )
66     {
67         return crc;
68     }
69     else
70     {
71         return ( U16 )( ~crc );
72     }
73 }

```

Figure 43. Example CRC Code

7.5. Example Temperature Reading

The following routine(s) may be implemented to read the temperature and calibrate the sensor:

```

1  Temperature.c
2  /*!
3   * Reads the raw temperature
4   * \retval temperature New raw temperature reading in 2's complement format
5   */
6   S8 RadioGetRawTemp( void )
7  {
8   ... S8 temp = 0;
9   ... U8 regValue = 0;
10  ...
11  ... regValue = RadioRead( 0x3C );
12  ...
13  ... // 2's complements conversion
14  ... temp = regValue & 0x7F;
15  ... if( ( regValue & 0x80 ) == 0x80 )
16  ... {
17  ...     temp *= -1;
18  ... }
19  ... return temp;
20  }
21
22  /*!
23   * Computes the temperature compensation factor
24   * \param [IN] actualTemp Actual temperature measured by an external device
25   * \retval compensationFactor Computed compensation factor
26   */
27   S8 RadioCalibrateTemp( S8 actualTemp )
28  {
29  ... return actualTemp - RadioGetRawTemp( );
30  }
31
32  /*!
33   * Gets the actual compensated temperature
34   * \param [IN] compensationFactor Return value of the calibration function
35   * \retval New compensated temperature value
36   */
37   S8 RadioGetTemp( S8 compensationFactor )
38  {
39  ... return RadioGetRawTemp( ) + compensationFactor;
40  }
41
42  /*!
43   * Usage example
44   */
45   void main( void )
46  {
47  ... S8 temp;
48  ... S8 actualTemp = 0;
49  ... S8 compensationFactor = 0;
50  ...
51  ... // Ask user for the temperature during calibration
52  ... actualTemp = AskUserTemperature( );
53  ... compensationFactor = RadioCalibrateTemp( actualTemp );
54  ...
55  ... while( True )
56  ... {
57  ...     temp = RadioGetTemp( compensationFactor );
58  ... }
59  }

```

Figure 44. Example Temperature Reading

8. Packaging Information

8.1. Package Outline Drawing

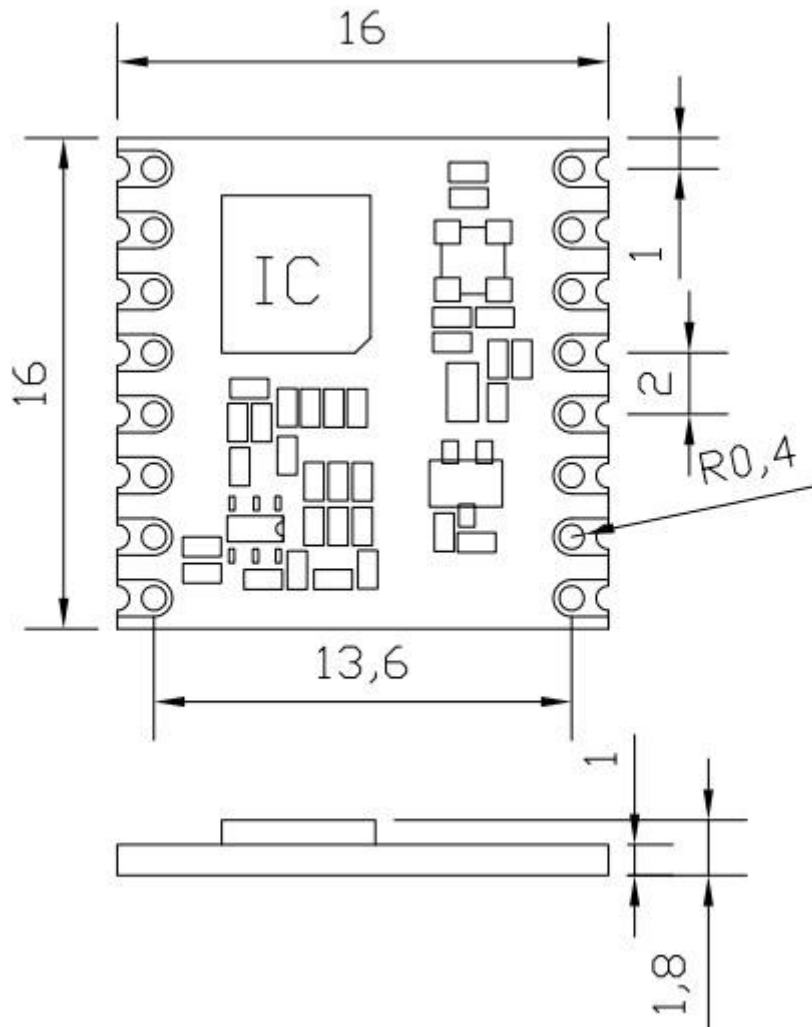
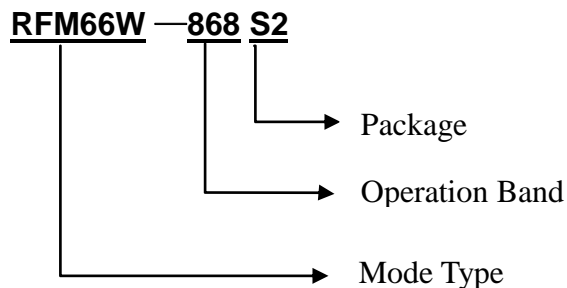


Figure 42. S 2 Package Outline Drawing

9. Ordering Information



P/N: RFM66W-868S2
RFM66W module at 868MHz band, SMD Package

P/N: RFM66W-915S2
RFM66W module at 915MHz band, SMD Package

HOPE MICROELECTRONICS CO.,LTD
Add: 2/F, Building 3, Pingshan Private
Enterprise Science and Technology
Park, Lishan Road, XiLi Town,
Nanshan District, Shenzhen,
Guangdong, China
Tel: 86-755-82973805
Fax: 86-755-82973550
Email: sales@hoperf.com
Website: <http://www.hoperf.com>
<http://www.hoperf.cn>

This document may contain preliminary information and is subject to change by Hope Microelectronics without notice. Hope Microelectronics assumes no responsibility or liability for any use of the information contained herein. Nothing in this document shall operate as an express or implied license or indemnity under the intellectual property rights of Hope Microelectronics or third parties. The products described in this document are not intended for use in implantation or other direct life support applications where malfunction may result in the direct physical harm or injury to persons. NO WARRANTIES OF ANY KIND, INCLUDING, BUT NOT LIMITED TO, THE IMPLIED WARRANTIES OF MECHANABILITY OR FITNESS FOR A PARTICULAR PURPOSE, ARE OFFERED IN THIS DOCUMENT.

©2006, HOPE MICROELECTRONICS CO.,LTD. All rights reserved.